

- SUPPLIES NEEDED**
- 3 1/4 YARDS OF 54" WIDE FABRIC
 - SEARS SCISSORS
 - REMOVABLE MARKING MEDIUM (chalk, wax, tailor's tack, etc.)
 - 1/4" NON-SEPARATING ZIPPER
 - THREAD
 - SEWING MACHINE
- optional:
- 1/2 YARD OF THINNER POCKET FABRIC
 - FUSIBLE INTERFACING

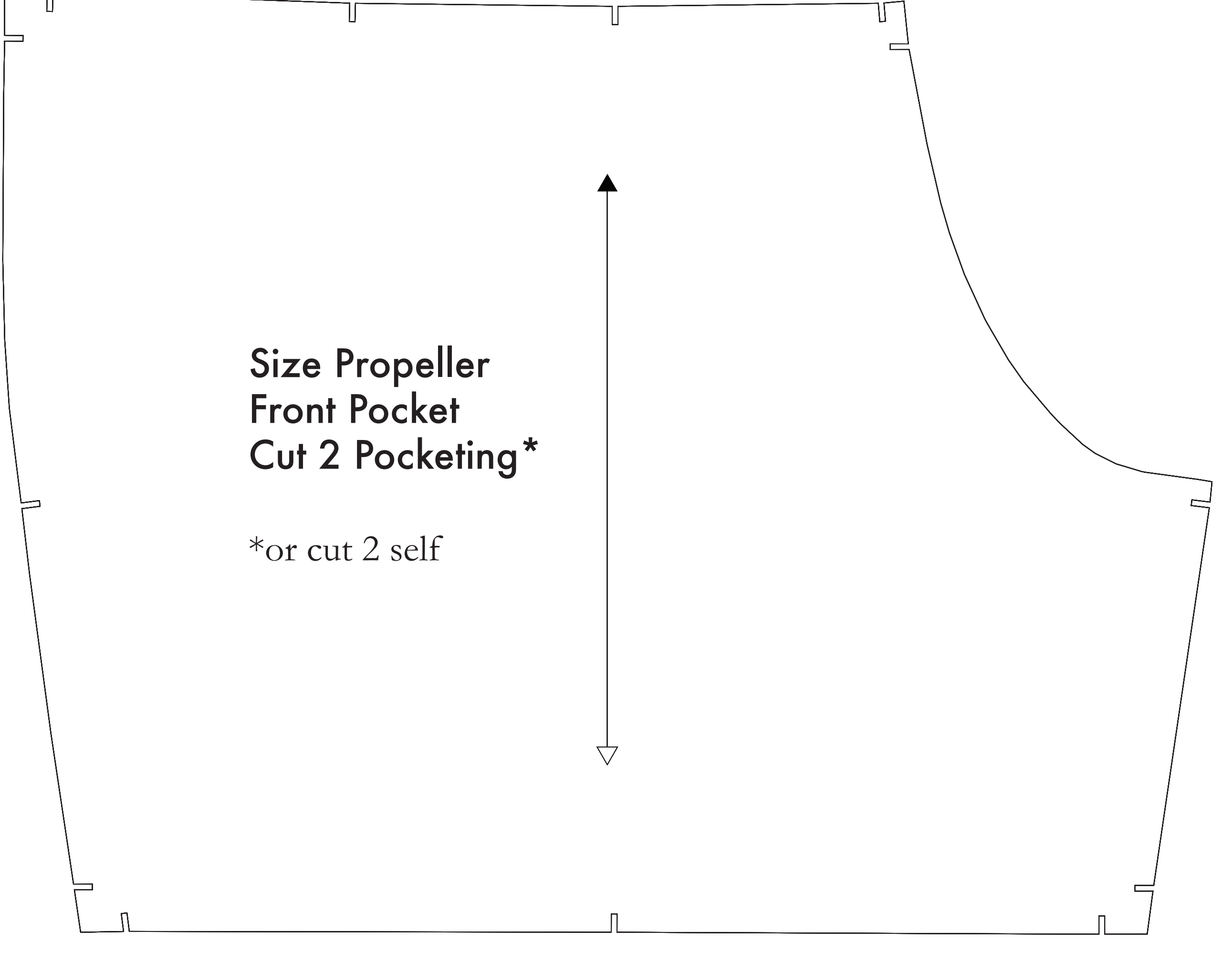
CUTTING INSTRUCTIONS

1. Print pattern. You can print the documents that are shown on standard size paper and tape the pieces together, or print on a wide-format printer (36" or wider). These sheets offer the service the approximately 1/2". If available to you, the REFS recommends wide-format printing.
2. Check your pattern is printed, cut along the outermost rectangle to remove any excess paper. This template should fit exactly on a 54" wide or larger piece of fabric that has been folded in half. If your fabric is less than 54" wide see NOTE A. For maximum fold the pattern is laid out for fabric that does not have a direction. For fabric with a nap, such as velvet or tulle, or fabric with a clear directional print see NOTE B.
3. Fold your fabric in half along the lengthwise grain matching selvage edge to selvage edge. Schedule in the self-finished edge of fabric. The narrow border keeps the fabric from unraveling or fraying. Once it has an edge that smooths out fraying, though not as thoroughly, as a finished fabric, it will be finished. Avoid the edge in your cut piece as the texture frequently differs from the main body of the fabric.
4. Trace the paper template on top your fabric, matching the finished edge of the fabric with the side of the paper marked "finished edge."
5. Trace also through the template pinning together both layers of fabric as well as the paper.
6. Cut around the perimeter of each piece.
7. Laying the pieces in place, you will need to snip each of the notches, taking care to not snip beyond the end of the 1/4" zipper.
8. Transfer all of the paper markings that are placed throughout the pattern. Some markings indicate seam allowances, while others will help you align pattern pieces with one another.
9. Mark all center fold lines. Using a pin, being together both layers of fabric and the pattern, mark the center of each doll back with chalk, wax or other removable, non-permanent tool. A tailor's tack may also be used. These center fold lines, or markings, are indicated by the following symbol:
10. (OPTIONAL) Cut fusible interfacing pieces (see NOTE C for more info). Pattern pieces that use fusible will be marked with the direction "Cut 2 Fusible" or "Cut 1 Fusible". These pieces are the Collar, Fly, Fly Facing, Front Pocket Facing, and Front Pocket Pouching. To cut the fusible, lay the material down with the glue side facing up, then place your pattern down and cut around the perimeter of each piece and notch.
11. Cut the Front Pocket Fly out of a lighter packing material. If you are not using a packing material, then the Front Pocket Fly may be cut through your other pattern pieces. Packing is used to reduce bulk in area of thicker material. - You will find an example of packing in any part of this page.

NOTE A: FABRIC LESS THAN 54" WIDE
 If your fabric is less than 54" wide, you will need to use a wide-format printer (36" or wider). These sheets offer the service the approximately 1/2". If available to you, the REFS recommends wide-format printing.

NOTE B: FABRIC WITH A DIRECTIONAL PRINT OR NAP
 If your fabric has a directional print or nap, such as velvet or tulle, or fabric with a clear directional print, you will need to use a wide-format printer (36" or wider). These sheets offer the service the approximately 1/2". If available to you, the REFS recommends wide-format printing.

NOTE C: USING FUSIBLE INTERFACING
 Fusible interfacing is a material that is used to reinforce, stabilize, and stabilize certain pieces in a garment. It is used to add stability to a garment. Read the manufacturer's instructions for use and use as directed. Do not use on fabric that is not intended for use with fusible interfacing.



Before cutting your fabric measure this square to make sure that the pattern is scaled correctly*
 *Some printers and software will automatically scale large scale images which will affect the fit.

The inner square should measure 4" x 4"
 The outer square should measure 12cm x 12cm

