

- SUPPLIES NEEDED**
- 2 YARDS OF 54" WIDE FABRIC
 - SHARP SCISSORS
 - REMOVABLE MARKING MEDIUM (chalk, wax, tailor's tack, etc.)
 - 1 - 24" NON-SEPARATING ZIPPER
 - THREAD
 - SEWING MACHINE
- optional:**
- 1/2 YARD OF THINNER POCKET FABRIC
 - FUSIBLE INTERFACING

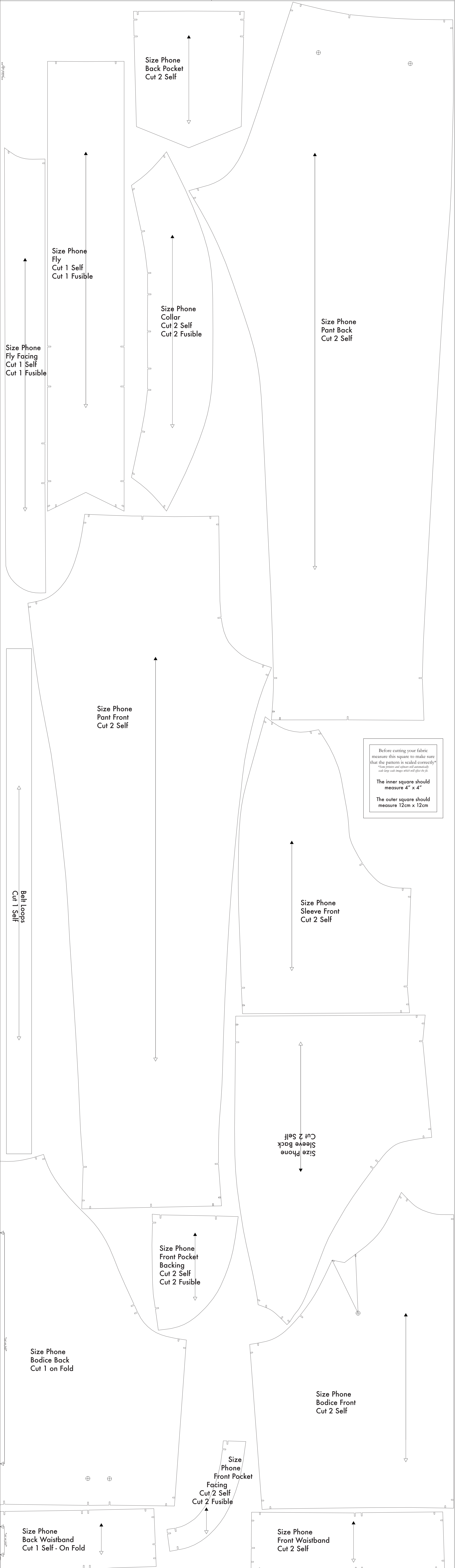
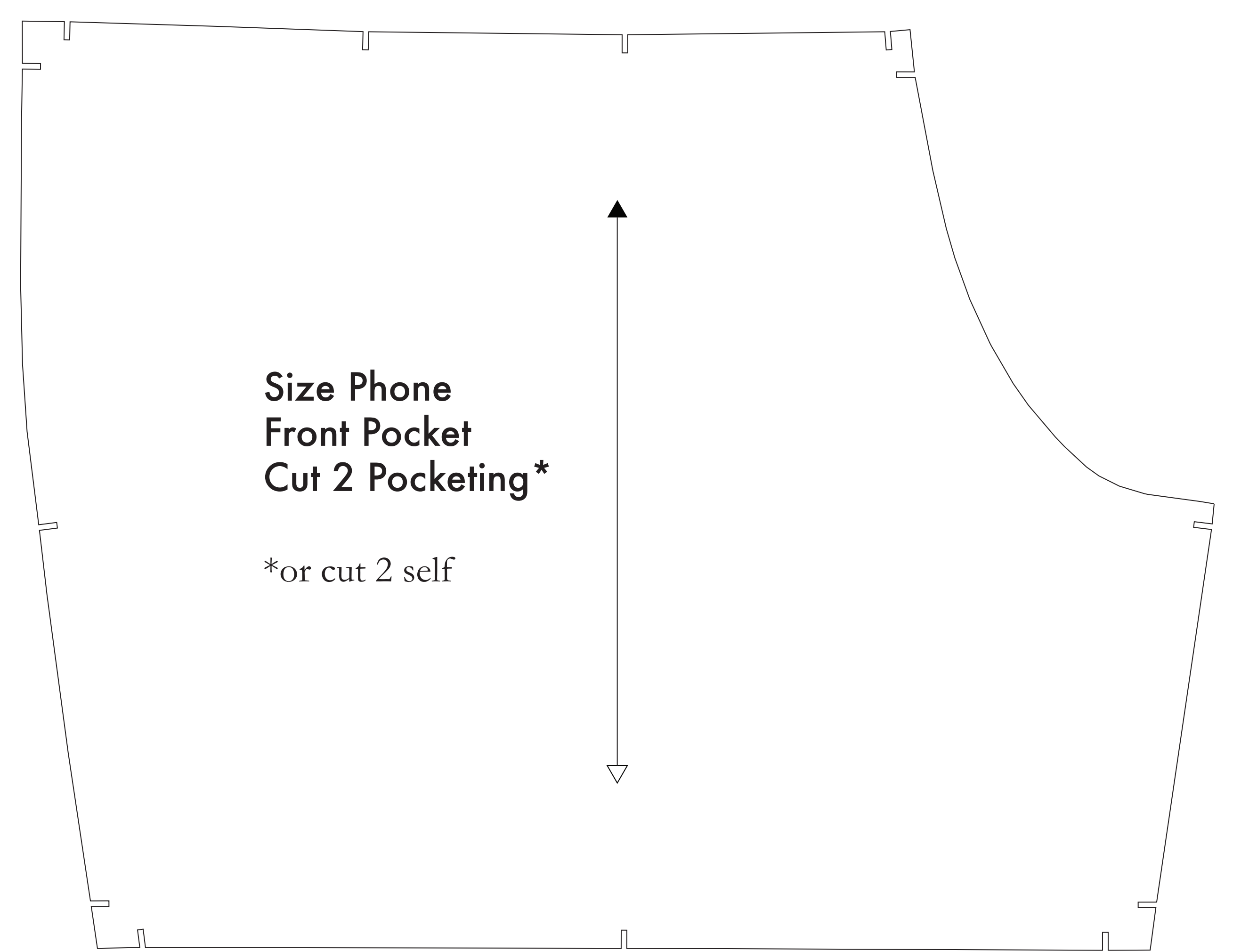
CUTTING INSTRUCTIONS

1. Trace pattern. You can print this document (and on sheets of standard size paper and tape the pieces together, or print on a wide-format printer (36" or wider). Please check the size for approximately \$12. If available to you, the 32X is recommended with better printing.
2. Check your pattern is printed, cut along the outermost rectangle to remove any excess paper. This template should fit exactly on a 36" wide or larger piece of fabric that has been folded in half. If your fabric is less than 36" wide, fold your fabric in half along the lengthwise grain, matching selvage edge to selvage edge. See **NOTE B**.
3. Fold your fabric in half along the lengthwise grain, matching selvage edge to selvage edge. See **NOTE B**.
4. Place the paper template on top your fabric, matching the folded edge of the fabric with the side of the paper marked "folded edge".
5. Place pins throughout the template pinning together both layers of fabric as well as the paper.
6. Cut around the perimeter of each piece.
7. Leaving the pins in place, you will next need to snip each of the notches, taking care to not snip beyond the end of the U-shape!
 - **Notches are 1/4" deep!** Markings that are dashed throughout the pattern. Some notches indicate *not* where to snip, while others *will* help you snip up before pins are still being.
8. Mark all inner or shell holes. Using a pin, bring together both layers of fabric and the pattern, mark the corner of each shell hole with chalk, wax or other removable, non-permanent tool. A tailor's tack may also be used. *This inner shell hole is a marking, or notches, or notches to the sewing pattern. They will be used on the Front Back, Back Back, and Front Pocket pieces that are not cut on the fold.*
9. **OPTIONAL:** Cut fusible interfacing pieces (see **NOTE C** for more info). Pattern pieces that use fusible will be marked with the direction "Cut 2 Fusible" or "Cut 1 Fusible". These pieces are: the Collar, Fly, Fly Facing, Front Pocket Facing, and Front Pocket Backing. To cut the fusible, lay the material down with the glue side facing up, then place your pattern down and cut around the perimeter of each piece and notch.
10. Cut the Front Pocket Bag use of a lighter pocketing material. If you are not using a pocketing material, then the Front Pocket Bag may be cut alongside your other pattern pieces. Pocketing is used to make holes in case of thicker material - You will find an example of pocketing on any pair of blue jeans.

NOTE A: FABRIC LESS THAN 54" WIDE
 If your fabric is less than 54" wide, you will need to cut each pattern piece with the grain in mind. The grain direction is shown on your fabric, along with the grain direction and number of the material. Do not ignore the grain direction. To find the grain direction, look at the right side of the material. The grain direction is shown on the right side of the material. These lines indicate the direction, or grain, of the fabric. These markings are used to ensure that the fabric is cut parallel to the grain. Measure from the top corner piece to the edge of the fabric, then mark the grain direction on the bottom corner. When the grain direction is perpendicular from the edge of your fabric, then the pattern piece is correctly positioned.

NOTE B: FABRIC WITH NAID OR DIRECTIONAL PATTERN
 For fabric with a pattern, or a directional pattern, such as a plaid, you will need to cut the pattern pieces perpendicular to the direction of the fabric, ensuring that the width lines are found on each pattern piece in the same direction.

NOTE C: USING FUSIBLE INTERFACING
 Fusible interfacing is available in a wide variety of weights, weights, and fabric content pieces in pattern. While the use of fusible interfacing is optional, it is recommended that you use a weight of 4-6 oz. to ensure that the fabric is not too heavy or too light. The weight of the interfacing should be indicated on the label of the interfacing.



Before cutting your fabric measure this square to make sure that the pattern is scaled correctly!
**Some printers and software will automatically scale large scale images which will affect the fit.*

The inner square should measure 4" x 4"

The outer square should measure 12cm x 12cm