



- SUPPLIES NEEDED**
- 3 YARDS OF 54" WIDE FABRIC
  - SHARP SCISSORS
  - REMOVABLE MARKING MEDIUM (chalk, wax, tailor's sock, etc.)
  - 1 - 24" NON-SEPARATING ZIPPER
  - THREAD
  - SEWING MACHINE
- optional:*
- 1/2 YARD OF THINNER POCKET FABRIC
  - FUSIBLE INTERFACING

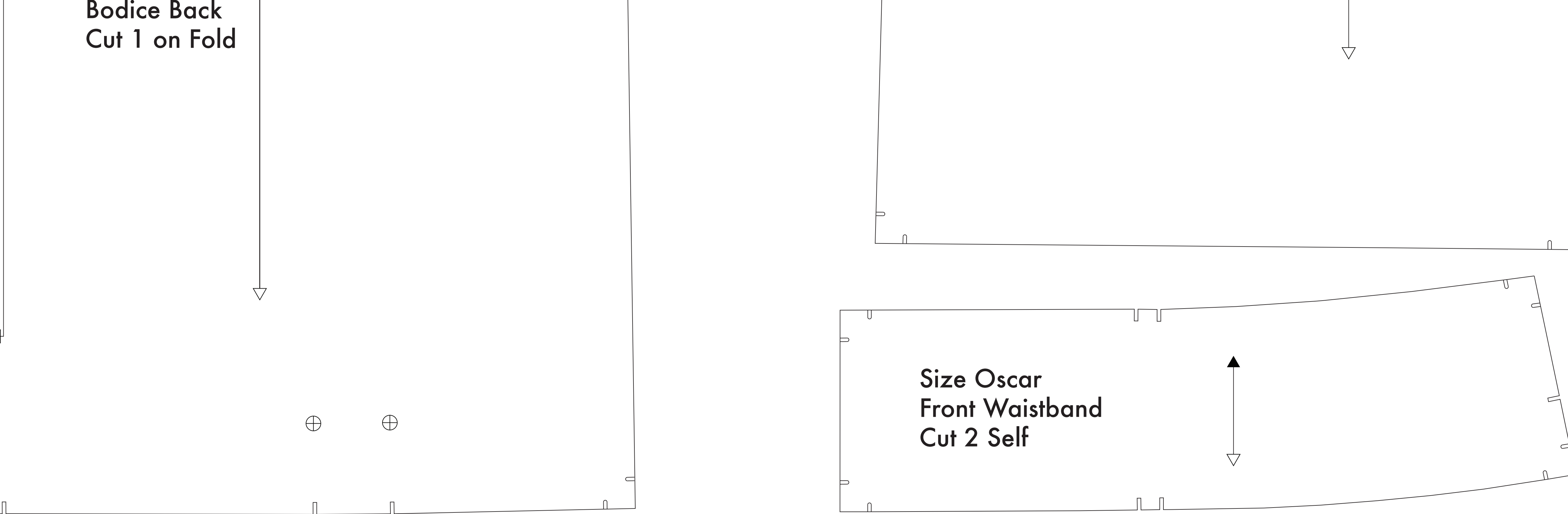
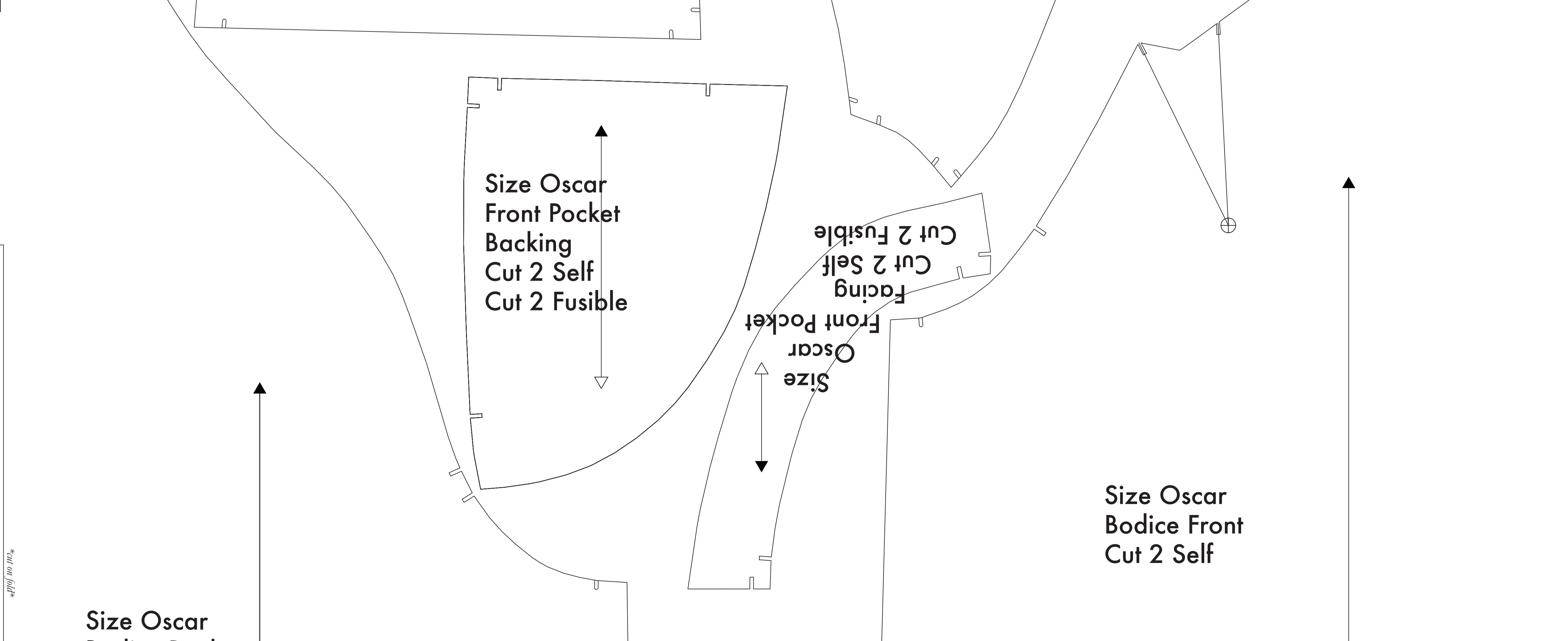
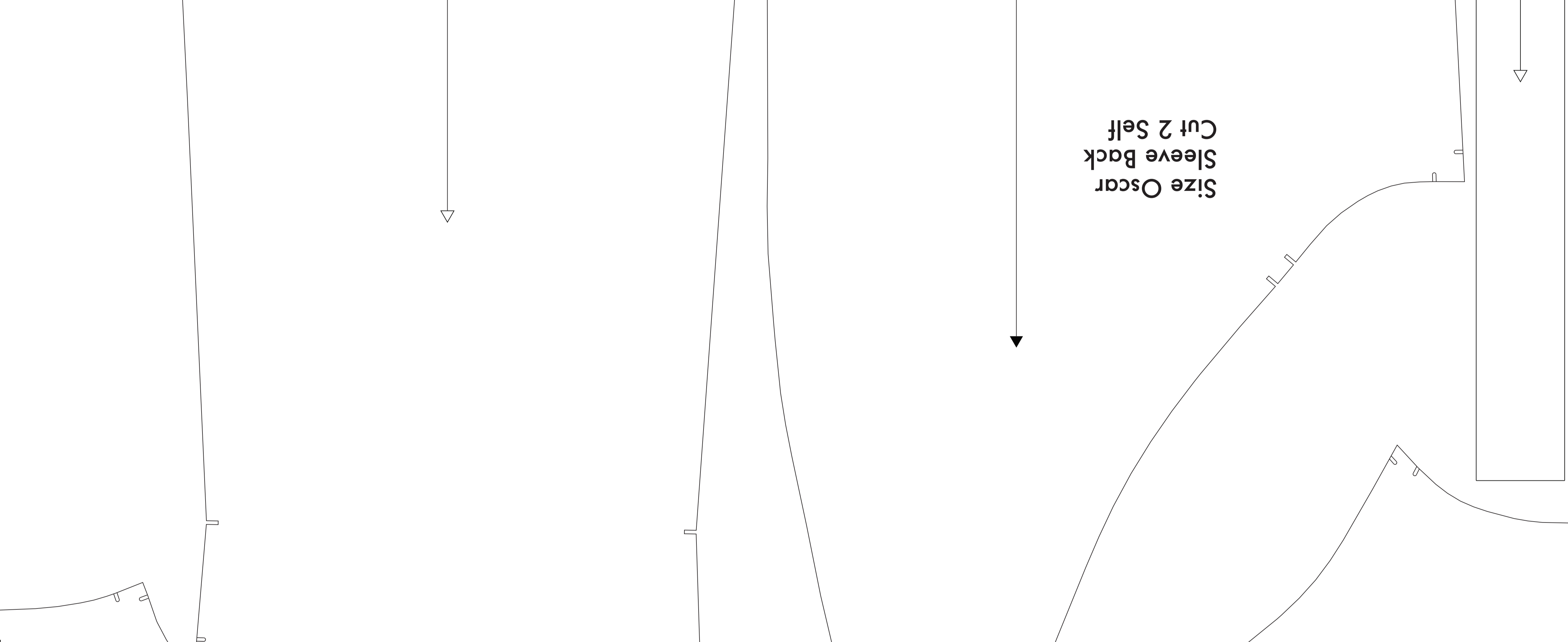
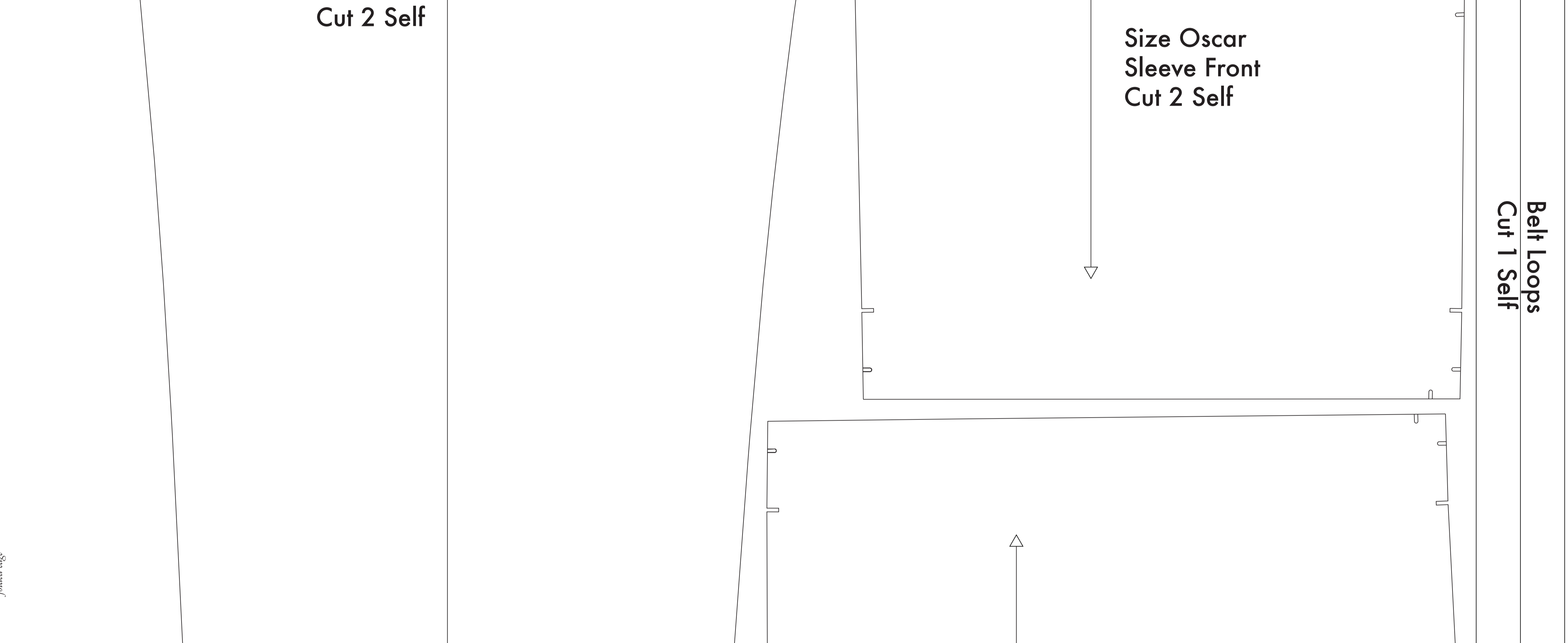
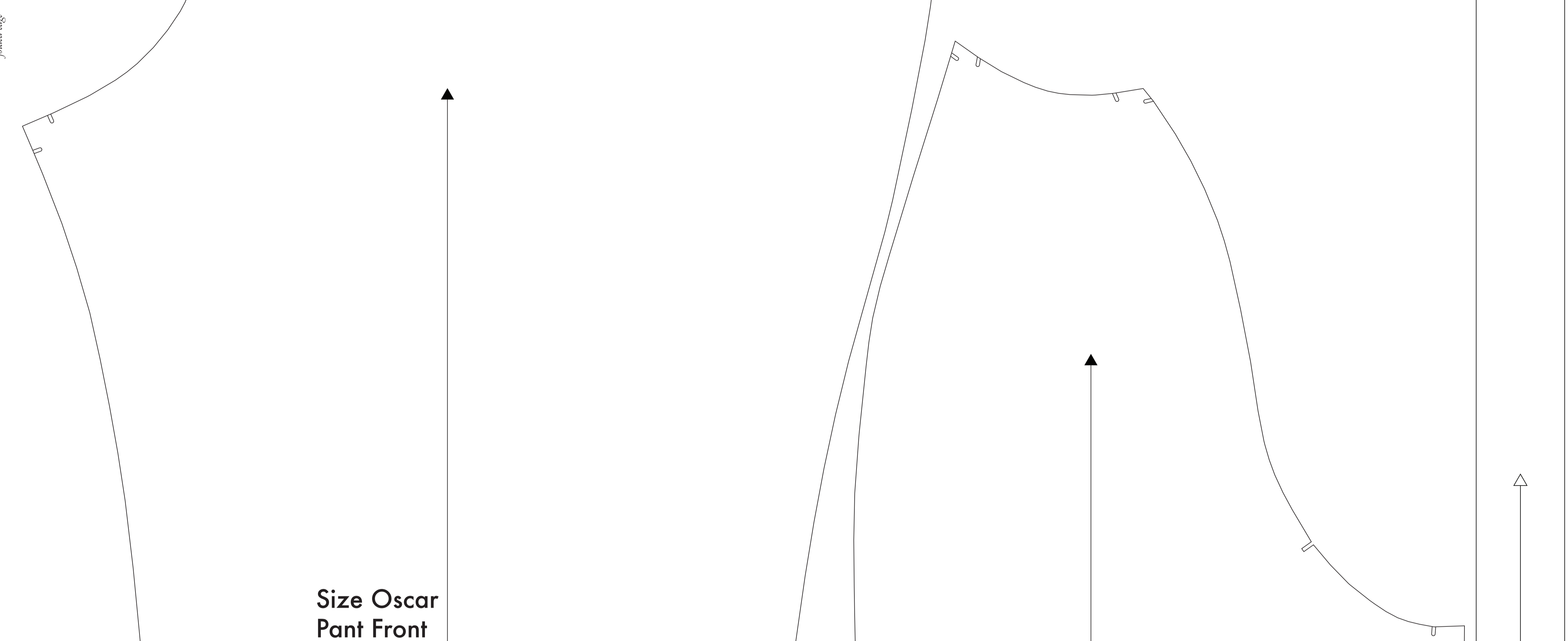
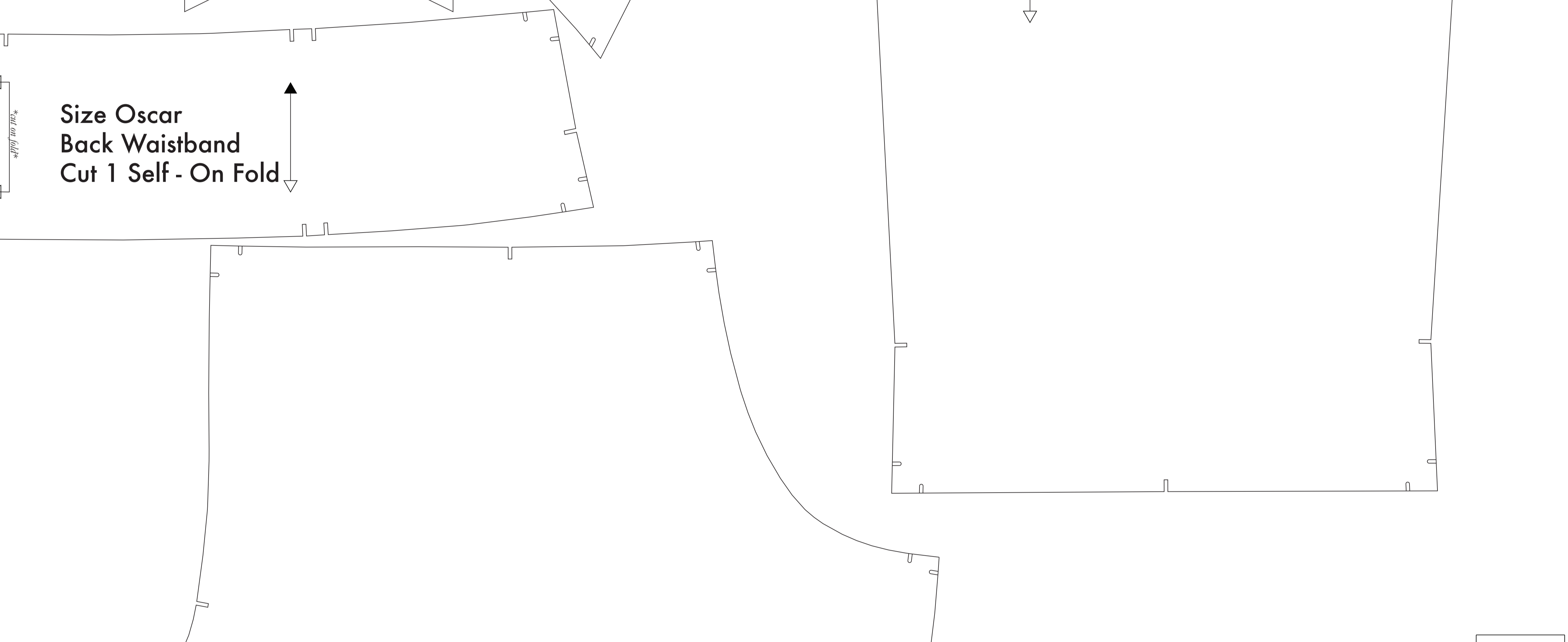
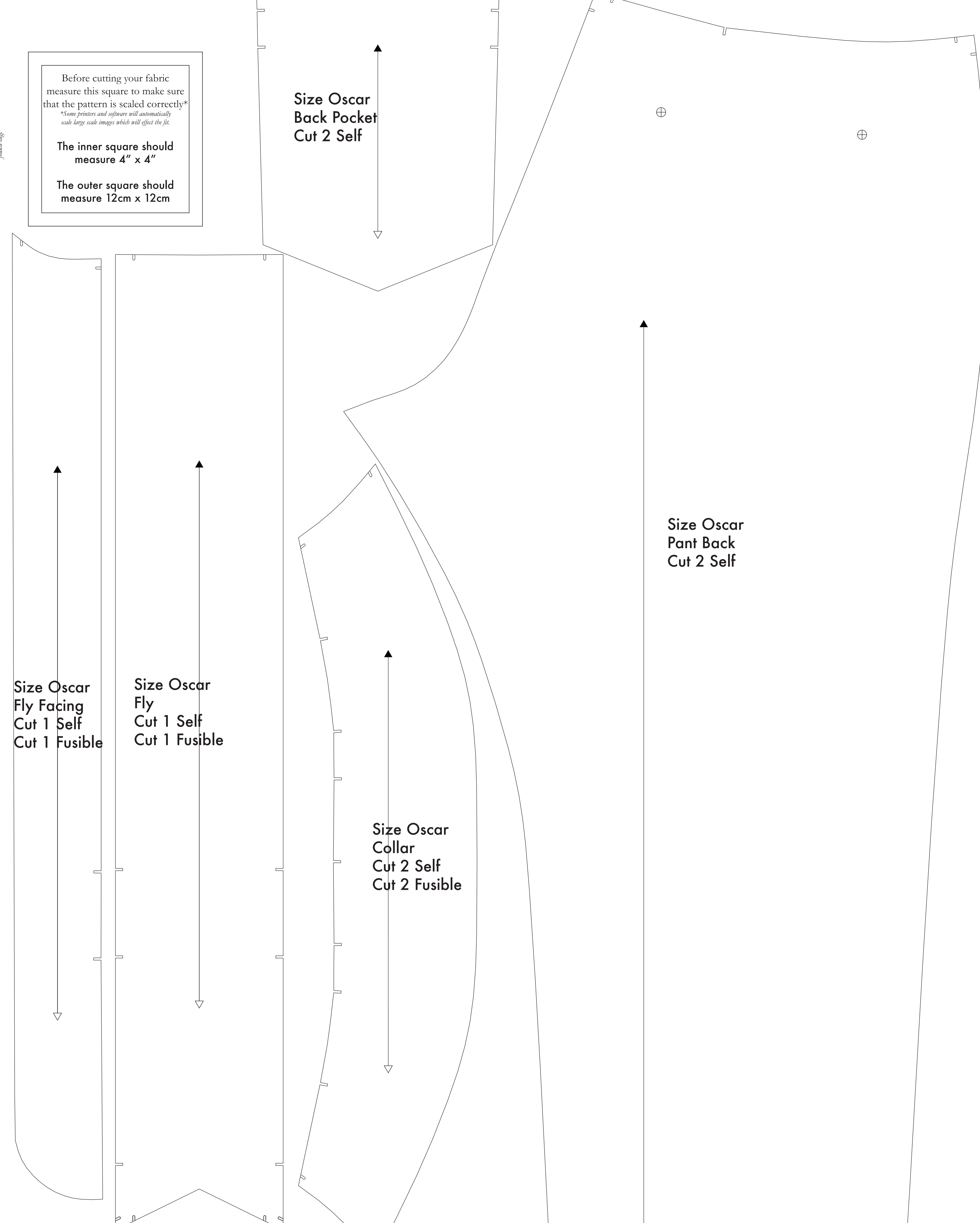
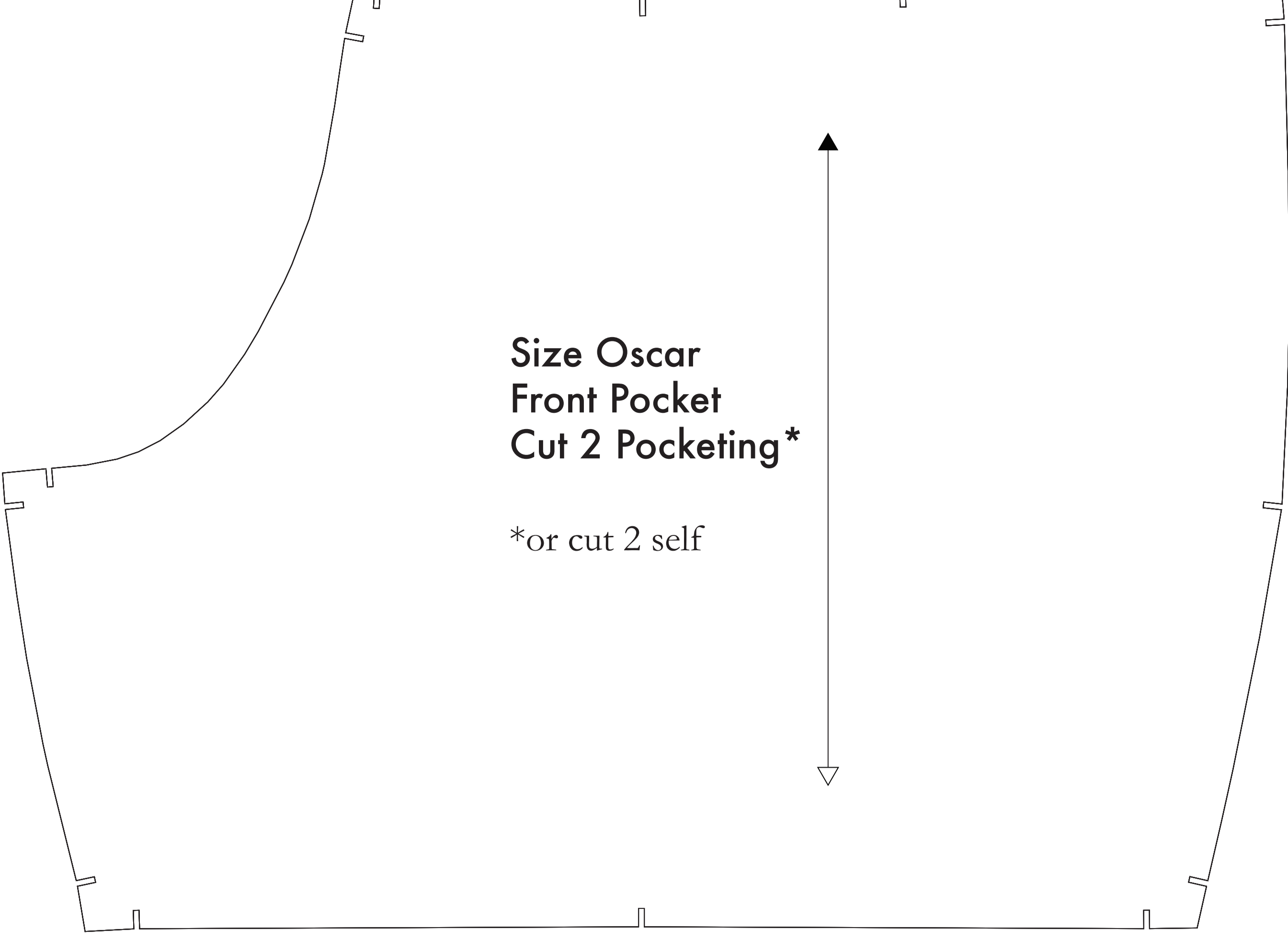
**CUTTING INSTRUCTIONS**

- Trace pattern. You can print this document sheet on sheets of standard size paper and tape the pieces together, or print on a wide-format printer (36" or wider). Print sheets offer this service for approximately \$12. If available to you, the B&W recommended wide-format printing.
- Once your pattern is printed, cut along the outermost rectangle to remove any excess paper. This template should be printed on a 36" wide or larger piece of fabric that has been folded in half. If your fabric is less than 36" wide, use **NOTE A**. For maximum detail this pattern is laid out for fabric that does not have a direction. For fabric with a nap, such as velvet or corduroy or fabric with a clear directional print, see **NOTE B**.
- Fold your fabric in half along the lengthwise grain matching selvedge edge to selvedge edge. Selvedge is the self-finished edge of fabric. This narrow band keeps the fabric from unraveling or fraying. Often it has an edge that resembles a crease, though sometimes it is frequently a clearly finished line. Fold along this edge to your cut piece as the texture frequently differs from the main body of the fabric.
- Trace the paper template on top your fabric, matching the folded edge of the fabric with the side of the paper marked "folded edge".
- Trace your pattern on the template pinning together both layers of fabric as well as the paper.
- Cut around the perimeter of each piece.
- Leaving the pins in place, you will need to snip each of the notches, taking care to not snip beyond the end of the "U" shape.
  - Notches are the "U" shaped markings that are found throughout the pattern. Some notches indicate seam allowances (width), while other notches give the pattern piece a stable wing.
- Mark all interior fold lines. Using a pin, bring together both layers of fabric and the pattern, mark the center of each fold with a chalk, wax or other removable, non-permanent tool. A chalk's mark may also be used. This marker will help you mark your pieces. *This marker will help you mark your pieces. This marker will help you mark your pieces.*
- OPTIONAL:** Cut fusible interfacing pieces. **NOTE C** For more info. Pattern pieces that use fusible will be marked with the direction "Cut 2 Fusible" or "Cut 1 Fusible". These pieces are the Collar, Fly, Fly Facing, Front Pocket Facing, and Front Pocket Pocketing. To cut the fusible, lay the material down with the glue side facing up, then place your pattern down and cut around the perimeter of each piece and notch.
- Use the Front Pocket Bag cut out of a lighter weight material. If you are not using a pre-cutting material, then the Front Pocket Bag may be cut through your other pattern pieces. Folding it and to make sure in case of darker material - You will not see any stitching on any part of the jumpsuit.

**NOTE A. FABRIC LESS THAN 36" WIDE**  
If your fabric is less than 36" wide, you will need to cut each piece into strips. Use the paper template and trace around the pieces to be marked onto the pattern piece and then it should work. The pattern pieces are printed on a 36" wide fabric. For maximum detail this pattern is laid out for fabric that does not have a direction. For fabric with a nap, such as velvet or corduroy or fabric with a clear directional print, see **NOTE B**.

**NOTE B. FABRIC WITH NAP OR DIRECTIONAL PATTERN**  
For fabric with a nap such as velvet or corduroy, fabric with a clear directional print, or fabric with a directional pattern, you will need to cut the pattern pieces out of the fabric with the nap or directional pattern in mind. There are markings on the pattern pieces to indicate the direction of the nap or directional pattern. When marking the fabric, you must mark the selvedge edge of your fabric. To trace your pattern on your fabric, you must align the selvedge edge of your fabric with the selvedge edge of the fabric. This ensures that the nap or directional pattern is consistent from the edge of your fabric to the pattern pieces in correct position.

**NOTE C. USING FUSIBLE INTERFACING**  
Fusible interfacing is a material that is used to support, strengthen, and stabilize certain pieces in a garment. The most common fusible interfacing is a paper. The pattern pieces that use fusible interfacing are the Collar, Fly, Fly Facing, Front Pocket Facing, and Front Pocket Pocketing. To use the interfacing, place the material down with the glue side facing up, then place your pattern down and cut around the perimeter of each piece and notch.



Before cutting your fabric measure this square to make sure that the pattern is scaled correctly\*  
\*Use paper and square will automatically scale large with images which will affect the fit.  
The inner square should measure 4" x 4"  
The outer square should measure 12cm x 12cm

\*\*\*fold edge\*\*

\*\*\*fold edge\*\*

\*\*\*fold edge\*\*

\*\*\*fold edge\*\*

\*\*\*fold edge\*\*

\*\*\*fold edge\*\*

\*\*\*fold edge\*\*

\*\*\*fold edge\*\*

\*\*\*fold edge\*\*