

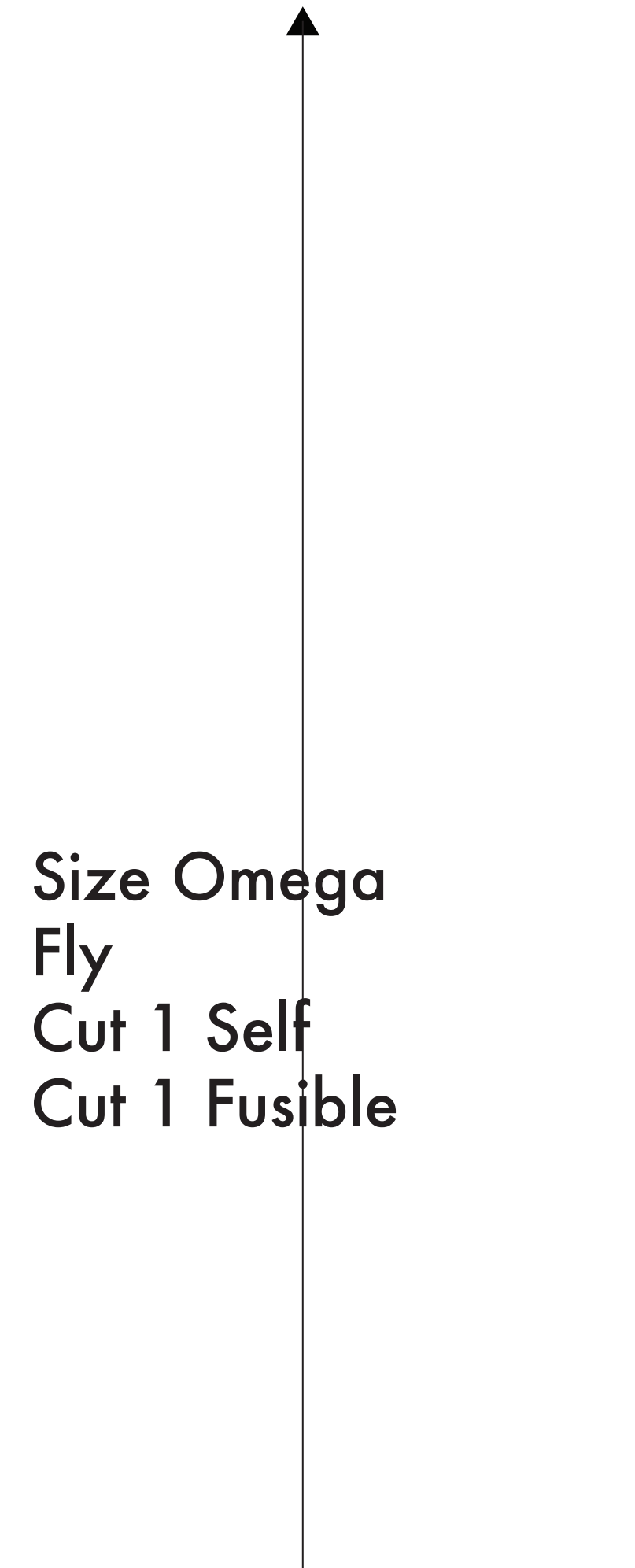
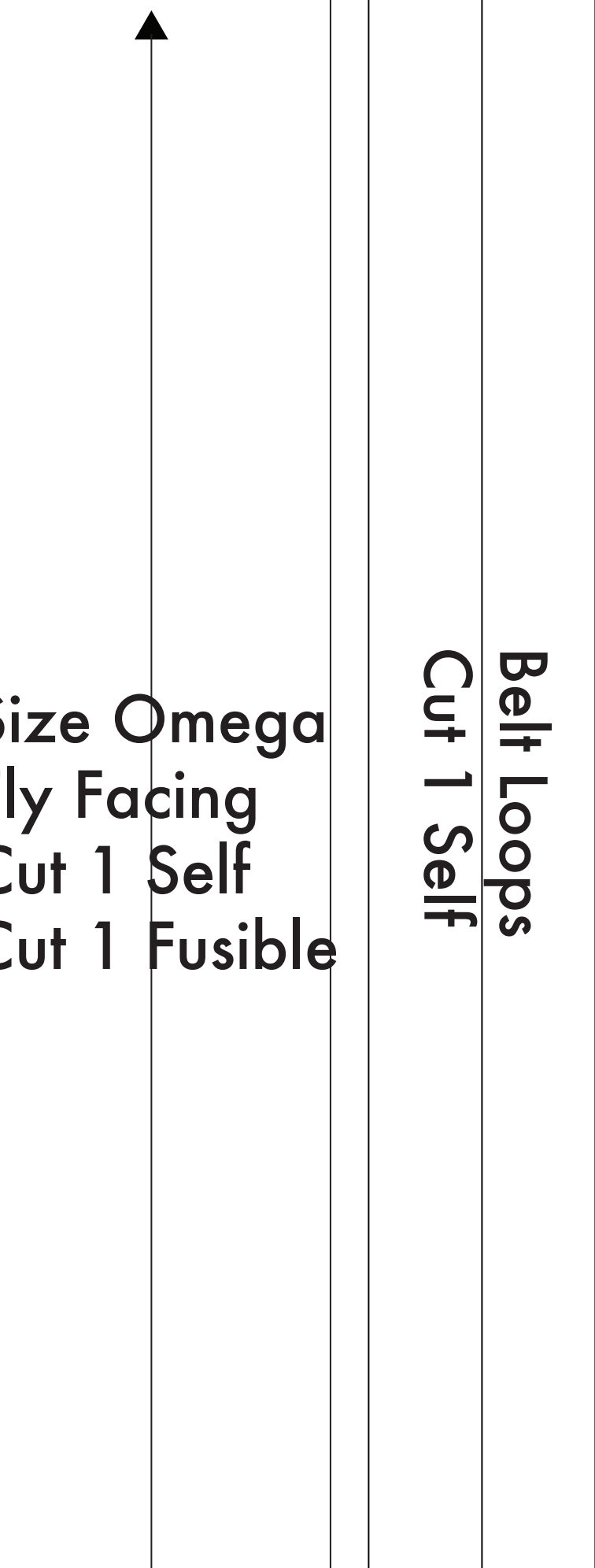
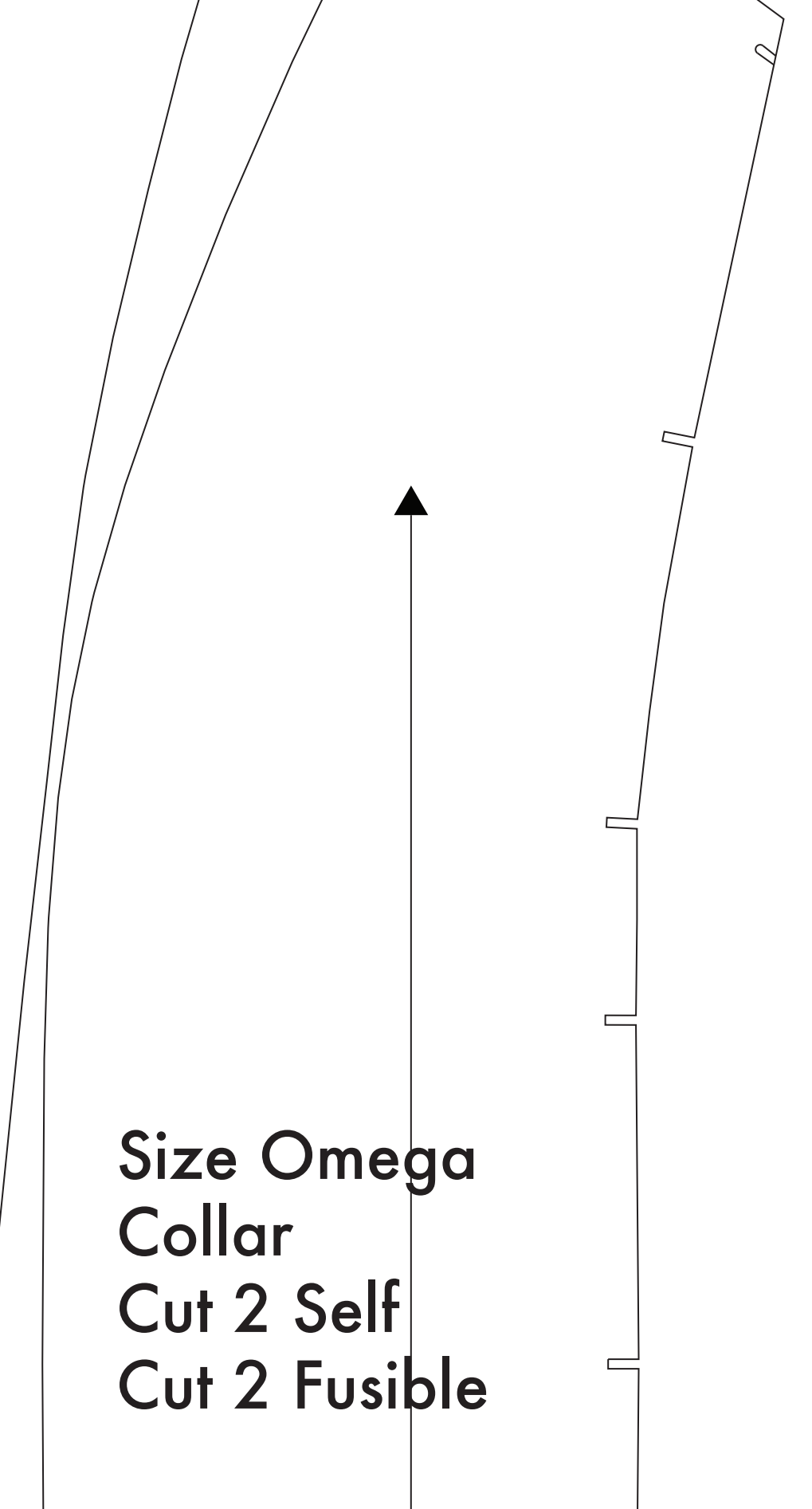
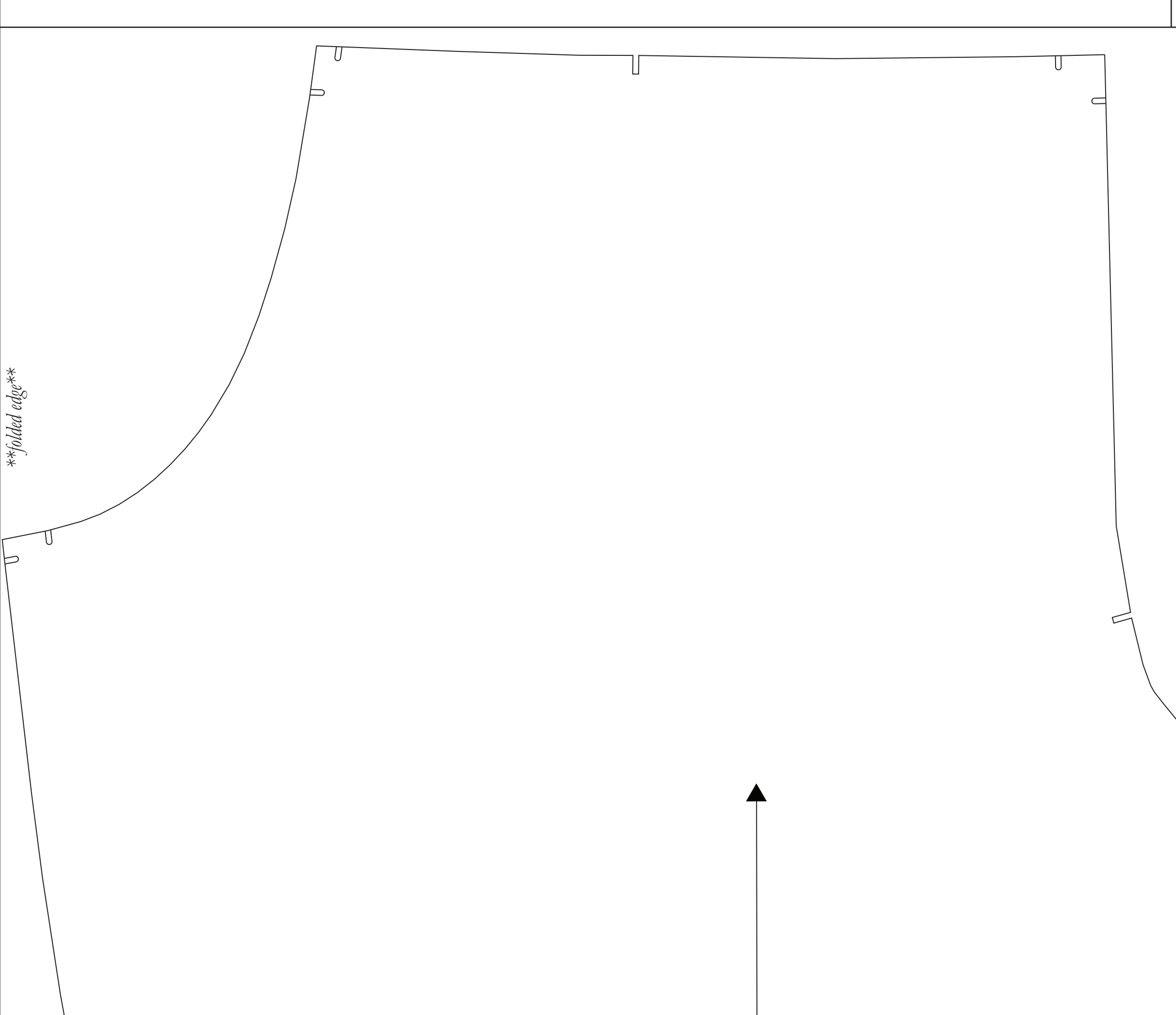
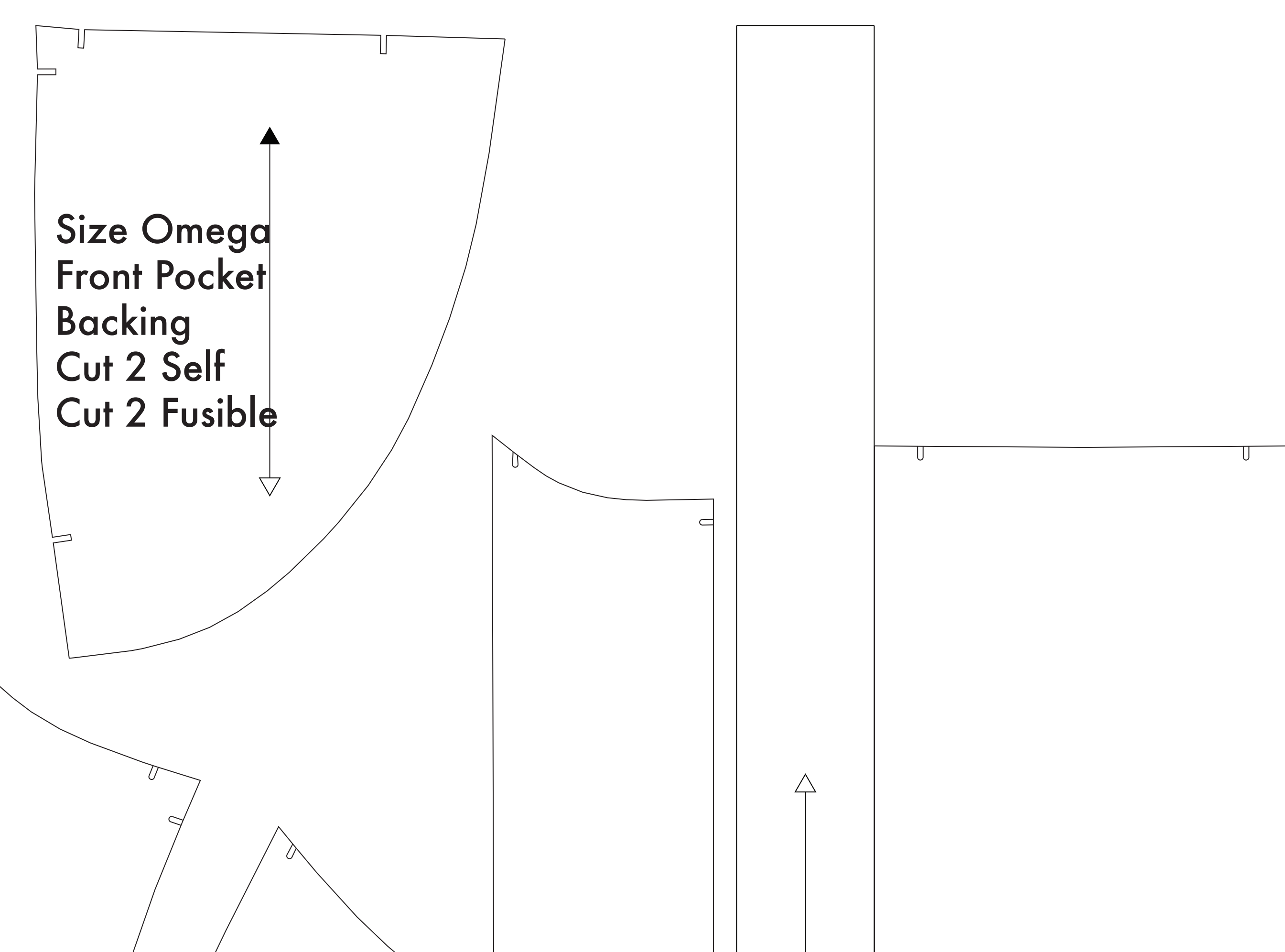
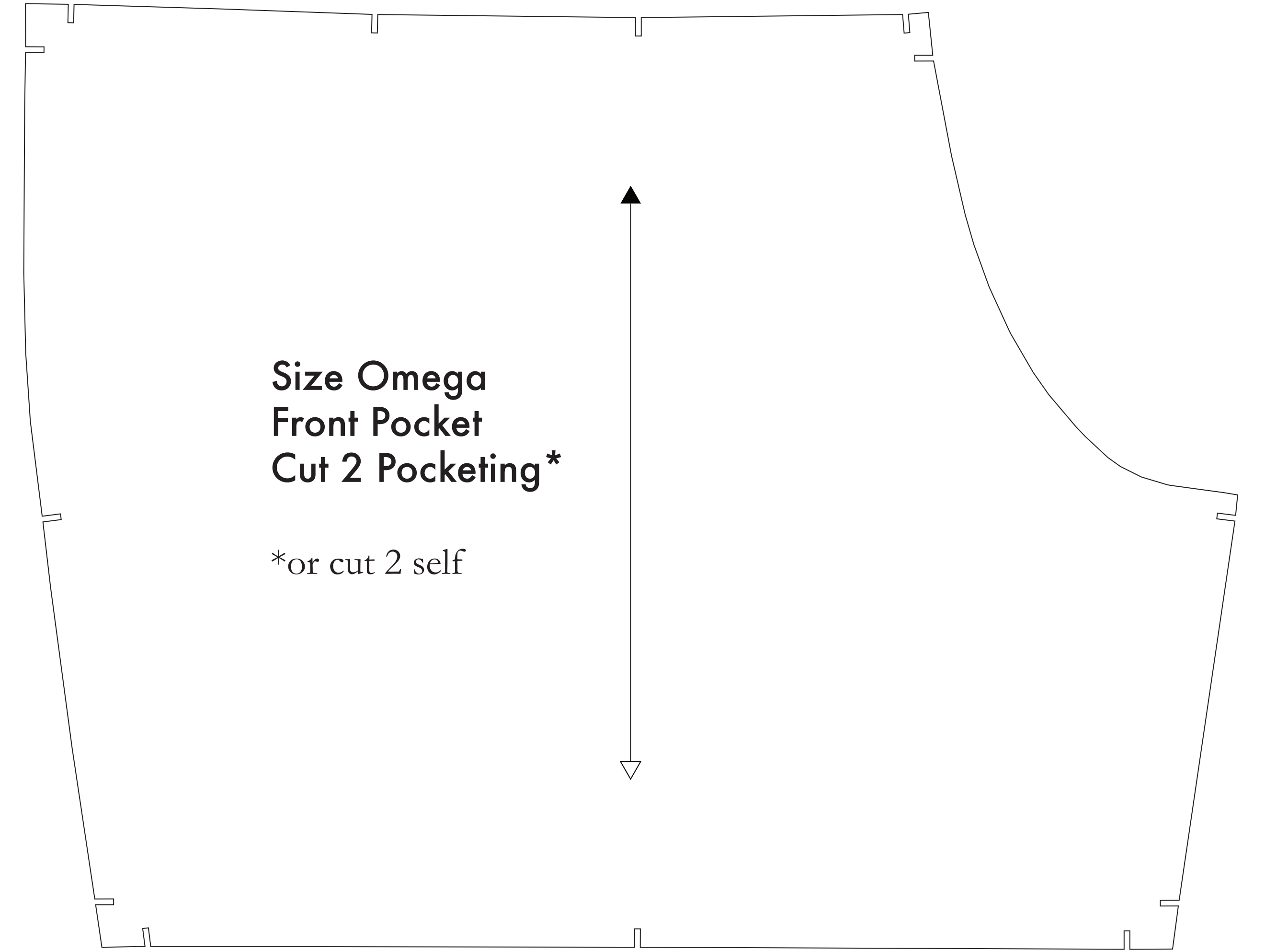
- SUPPLIES NEEDED**
- 2 YARDS OF 54" WIDE FABRIC
 - SHARP SCISSORS
 - REMOVABLE MARKING MEDIUM (chalk, wax, tailor's tack, etc.)
 - 1 - 22" NON-SEPARATING ZIPPER
 - THREAD
 - SEWING MACHINE
- Optional:**
- 1/2 YARD OF THINNER POCKET FABRIC
 - FUSIBLE INTERFACING

- CUTTING INSTRUCTIONS**
1. Trace pattern. You can print this document and use sheets of standard size paper and tape the pieces together or print on a wide format printer (36" or wider). These shops offer this service for approximately \$12. If available to you, the B&B recommendations will be most helpful.
 2. Once your pattern is printed, cut along the outermost rectangle to remove any excess paper. This template should fit exactly on a 36" wide or larger piece of fabric that has been folded in half. If your fabric is less than 36" wide, see **NOTE A**. If an equipment fold line is indicated for fabric that does not have a direction, use fabric with a nap, such as velvet or corduroy or fabric with a clear directional print see **NOTE B**.
 3. Fold your fabric in half along the lengthwise grain reaching shoulder edge to shoulder edge. Sewage is the self-finished edge of fabric. This narrow leader keeps the fabric from unraveling or fraying. When it has an edge that resembles one facing, though not as frequently, a clearly finished line will be found. Avoid this edge in your cut pieces as the texture frequently differs from the main body of the fabric.
 4. Place the paper template on top of your fabric, matching the folded edge of the fabric with the side of the paper marked "Should edge".
 5. Trace your template on top of your fabric, matching the folded edge of the fabric as well as the paper.
 6. Cut around the perimeter of each piece.
 7. Laying the piece in place, you will need to snip each of the notches, taking care to not snip beyond the end of the U shape!
 8. Mark all interior shell holes, waist, or other removable, nonpermanent tool. A tailor's tack may also be used. *These are the V shaped markings that are found throughout the pattern. Some marks indicate seam allowances which, while others will help you line up pattern pieces while sewing. They will be found on the Front Back, Back Back, and Front Front pieces. These pieces are the Collar, Fly, the Facing, Front Pocket Facing, and Front Pocket Backing. To cut the fusible, lay the material down with the glue side facing up, then place your pattern down and cut around the perimeter of each piece and notch.*
 9. **OPTIONAL:** Cut fusible interfacing pieces see **NOTE C** for more info). Pattern pieces that use fusible will be marked with the direction "Cut 2 Fusible" or "Cut 1 Fusible". These pieces are the Collar, Fly, the Facing, Front Pocket Facing, and Front Pocket Backing. To cut the fusible, lay the material down with the glue side facing up, then place your pattern down and cut around the perimeter of each piece and notch.
 10. Cut the Front Pocket Bag out of a lighter pocketing material. If you are not using a pocketing material, then the Front Pocket Bag may be cut alongside your other pattern pieces. Pocketing is used to make holes in case of lighter material - You will find an example of pocketing on any pair of blue jeans.

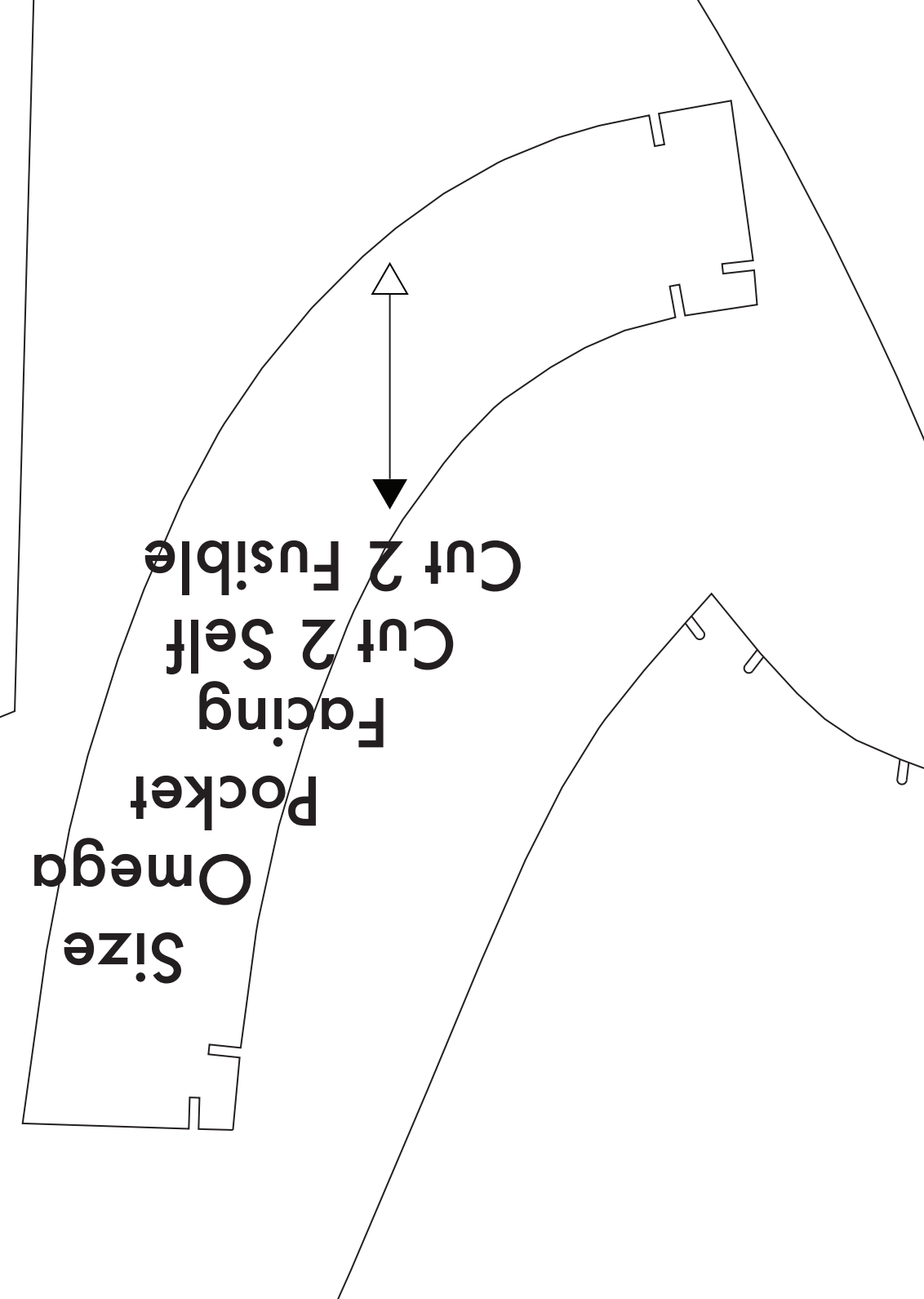
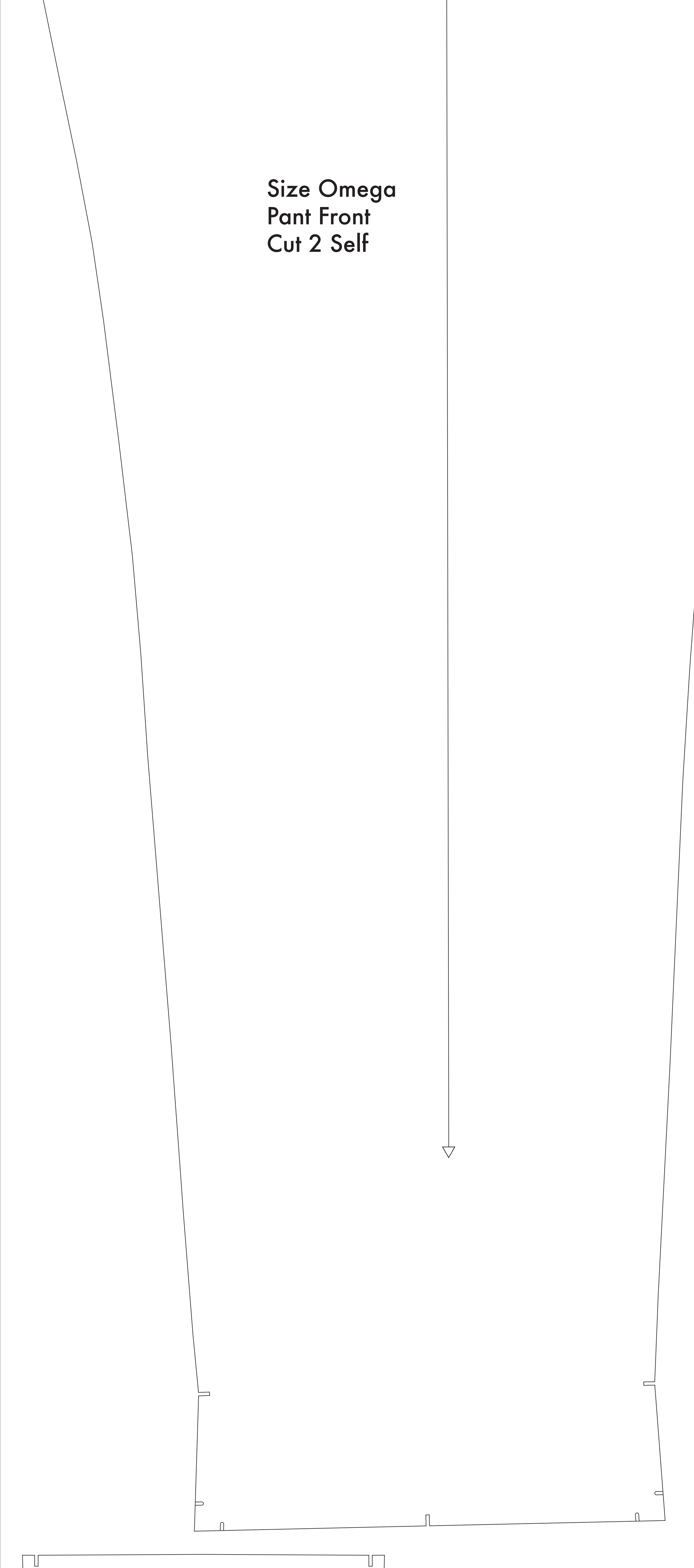
NOTE A: FABRIC LESS THAN 36" WIDE
 If your fabric is less than 36" wide you will need to cut each pattern piece in half vertically from the paper template and sew a piece on your fabric using your own machine. The pattern pieces are not intended to be cut in half. The quantity measurement and position are all marked on each pattern piece for ease of use. To help the printing, markings for the right side are on the left side of the fabric. When marking fabric on your fabric there has to be a seam parallel to the shoulder edge of your fabric. To ensure that they are parallel measure the distance from the top seam piece to the edge of the fabric. Also mark that they are parallel measure for arms. When the top and bottom pieces are established from the edge of your fabric then the pattern piece is correctly positioned.

NOTE B: FABRIC WITH NAP OR DIRECTIONAL PATTERN
 Use fabric with directional nap or other directional fabric with clear directional print or other directional fabric such as corduroy, velvet or fabric with a clear directional print. Lay the pattern piece on the fabric with the nap or directional print facing up. The width lines are placed on each pattern piece in the same direction.

NOTE C: USING FUSIBLE INTERFACING
 Fusible interfacing is a material that is used to reinforce, strengthen, and stabilize certain pieces of a garment. Round these items outwards to help to stabilize the garment. When the top and bottom pieces are established from the edge of your fabric then the pattern piece is correctly positioned.



Belt Loops Cut 1 Self



Before cutting your fabric measure this square to make sure that the pattern is scaled correctly*
*Some printers and software will automatically scale large size images which will affect the fit.

The inner square should measure 4" x 4"
 The outer square should measure 12cm x 12cm

