

- SUPPLIES NEEDED**
- 3 YARDS OF 54" WIDE FABRIC
  - SHARP SCISSORS
  - REMOVABLE MARKING MEDIUM (chalk, wax, tailor's tack, etc.)
  - 1/2" NONSEAMING ZIPPER
  - THREAD
  - SEWING MACHINE
- optional:
- 1/2 YARD OF THINNER POCKET FABRIC
  - FUSIBLE INTERFACING

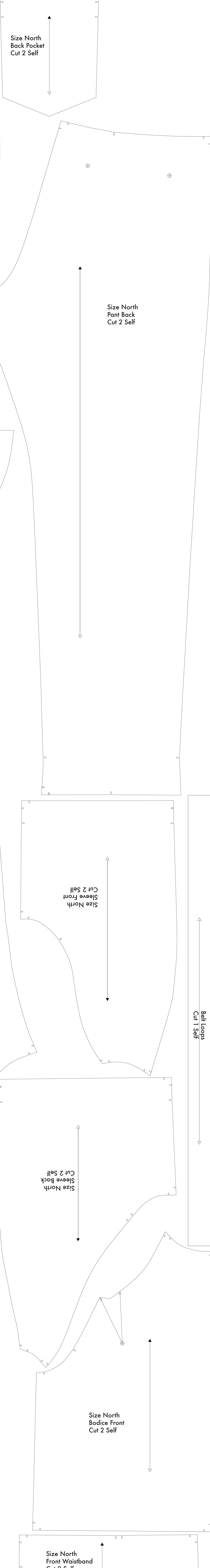
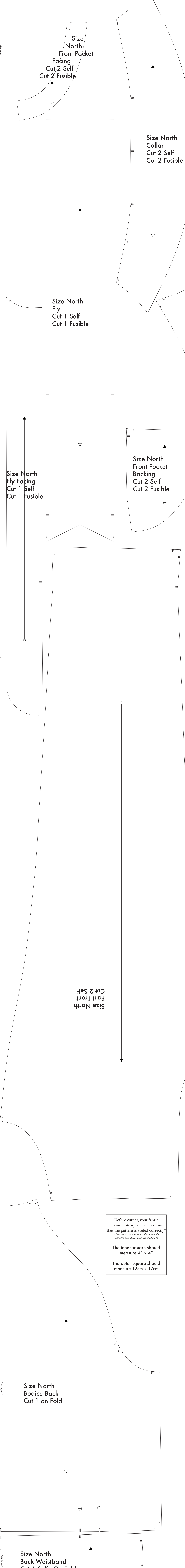
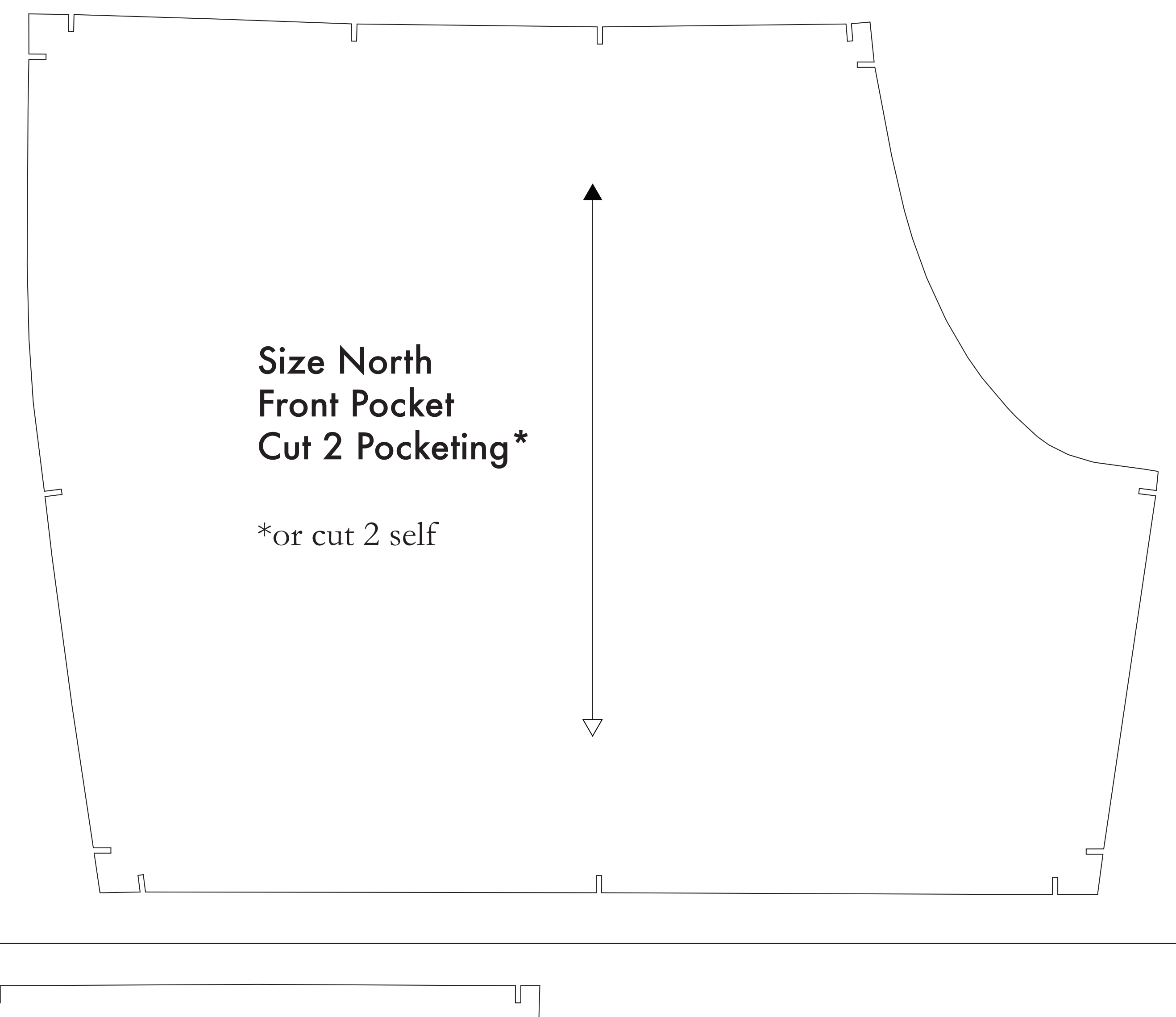
**CUTTING INSTRUCTIONS**

- Print pattern. You can print this document out on sheets of standard size paper and tape the pieces together, or print on a wide-format printer (36" or wider). Print sheets after this service for approximately \$12. If available to you, the B2B recommends wide-format printing.
- Once your pattern is printed, cut along the outermost rectangle to remove any excess paper. This template should fit exactly on a 54" wide or larger piece of fabric that has been folded in half. If your fabric is less than 54" wide use **NOTE A**. For maximum detail the pattern is laid out for fabric that does not have a direction. For fabric with a grain, such as velvet or corduroy, or fabric with a clear directional grain use **NOTE B**.
- Each cut piece, in half along the lengthwise grain matching shoulder edge to shoulder edge. Schedule a the self-finished edge of fabric. This means handle large the fabric from shoulder to hemline. Often a bias edge that resembles any fringe, though just as frequently, a clearly finished line will be found. Avoid this edge in your cut pieces as the texture frequently differs from the main body of the fabric.
- Place the paper template on top your fabric, matching the folded edge of the fabric with the side of the paper marked "fold edge".
- Place pins throughout the template pinning together both layers of fabric as well as the paper.
- Cut around the perimeter of each piece.
- Leaving the pins in place, you will need to step each of the notches, taking care to not step beyond the end of the fabric.

**NOTE A: FABRIC LESS THAN 54" WIDE**  
If your fabric is less than 54" wide you will need to cut each pattern piece with double fold as the pattern pieces are designed to be cut on a 54" wide fabric. To ensure the pieces are cut on a 54" wide fabric you will need to cut each pattern piece with double fold as the pattern pieces are designed to be cut on a 54" wide fabric. To ensure the pieces are cut on a 54" wide fabric you will need to cut each pattern piece with double fold as the pattern pieces are designed to be cut on a 54" wide fabric.

**NOTE B: FABRIC WITH A GRAIN OR DIRECTIONAL PATTERN**  
If your fabric has a grain or a directional pattern, such as velvet or corduroy, you will need to cut each pattern piece with double fold as the pattern pieces are designed to be cut on a 54" wide fabric. To ensure the pieces are cut on a 54" wide fabric you will need to cut each pattern piece with double fold as the pattern pieces are designed to be cut on a 54" wide fabric.

**NOTE C: USING FUSIBLE INTERFACING**  
Fusible interfacing is a material that is used to stabilize, strengthen, and add body to fabric pieces in garments. While the use of fusible interfacing is optional, the B2B recommends its use to help stabilize the fabric and to help prevent stretching of the fabric.



Before cutting your fabric measure this square to make sure that the pattern is scaled correctly!  
*\*Using a printer and software will automatically scale large and small images to fit.*

The inner square should measure 4" x 4"  
The outer square should measure 12cm x 12cm