

SUPPLIES NEEDED

- 2 YARDS OF 1/2" WIDE FABRIC
- SHARP SCISSORS
- REMOVABLE MARKING MEDIUM (chalk, wax, tailor's tack, etc.)
- 1 - 22" NON-SEPARATING ZIPPER
- THREAD
- SEWING MACHINE (optional)
- 1/2 YARD OF THINNER POCKET FABRIC
- FUSIBLE INTERFACING

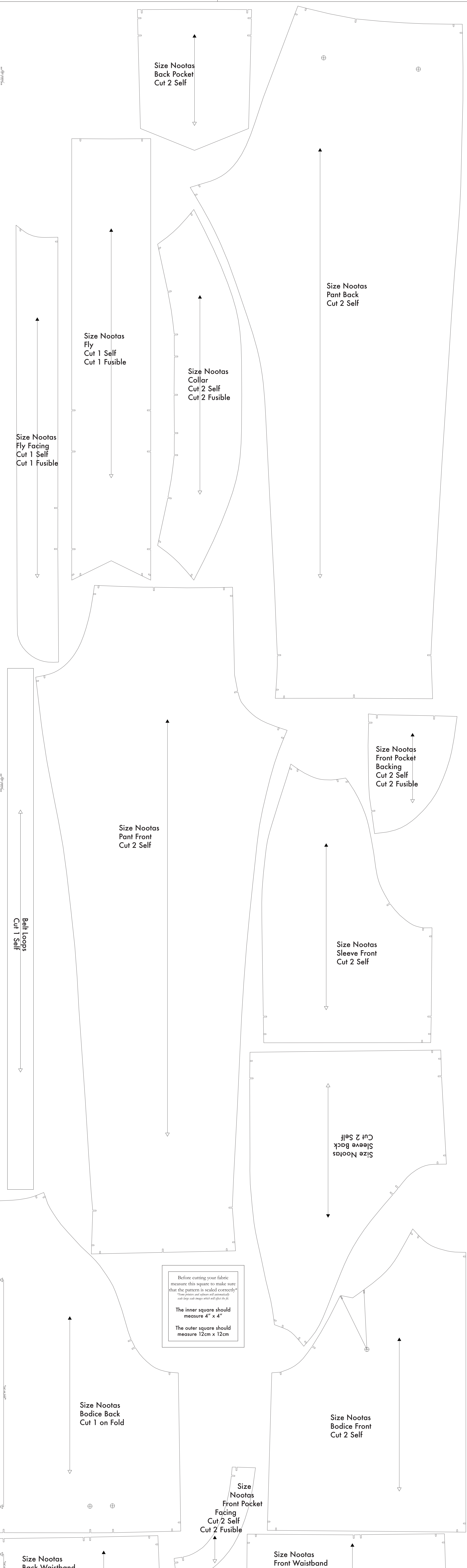
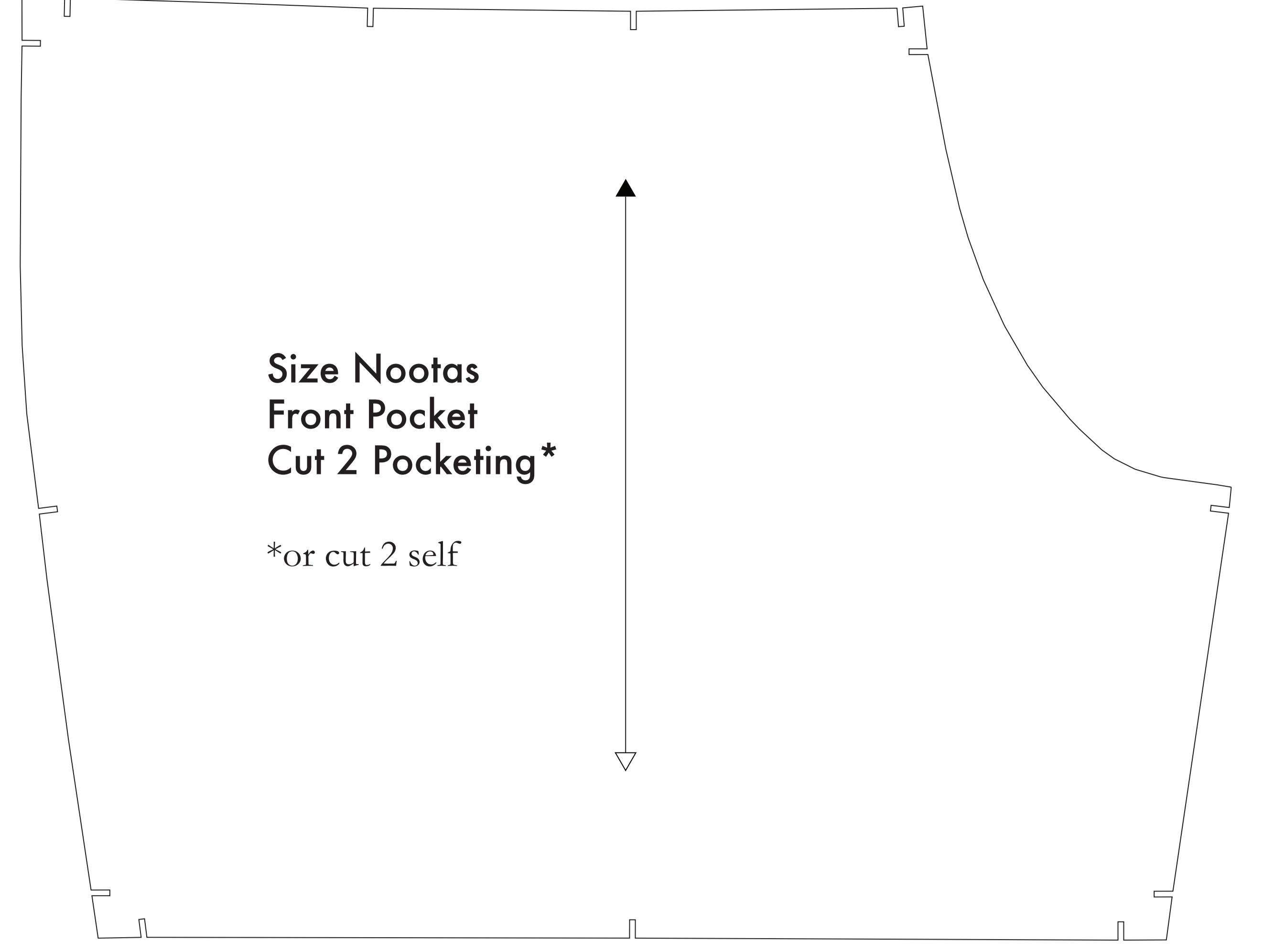
CUTTING INSTRUCTIONS

1. These patterns are intended to be printed on sheets of standard size paper and taped together, or pinned on a wide-format printer (36" or wider). Print sheets offer this service for approximately \$12. If available to you, the BETA recommends wide-format printing.
2. Once your pattern is printed, cut along the outermost rectangle to remove any excess paper. This template should fit exactly on a 54" wide or larger piece of fabric that has been folded in half. If your fabric is less than 54" wide, see **NOTE A**. For maximum yield this pattern is laid out for fabric that does not have a direction. For fabric with a nap, such as velvet or corduroy or fabric with a clear directional print, see **NOTE B**.
3. Fold your fabric in half along the lengthwise grain matching selvedge edge to selvedge edge. Selvage is the self-finished edge of fabric. This narrow border keeps the fabric from unraveling or fraying. Observe that an edge that resembles tiny frays, though not as frequently, a clearly finished line will be found. Avoid this edge in your cut pieces as the fabric frequently differs from the main body of the fabric.
4. Place the paper template on top your fabric, matching the folded edge of the fabric with the side of the paper marked "folded edge".
5. Place pins throughout the template pinning together both layers of fabric as well as the paper.
6. Cut around the perimeter of each piece.
7. Leaving the pins in place, you will need to snip each of the notches, taking care to not snip beyond the end of the U shape!
 - Notches are 1/4" deep markings that are placed throughout the pattern. Some notches indicate seam allowances, while others will help you align pattern pieces while sewing.
 - Mark all interior notches. Using a pin, bring together both layers of fabric and the pattern, mark the center of each notch with chalk, wax or other removable, nonpermanent mark. A tailor's tack may also be used.
 - This marker will help, or markings, are indicated by the following symbols:
 - ⊕: This will be used on the Fly, Collar, Fly Facing, and Fly Facing pieces that are sewn together.
 - ⊗: This will be used on the Collar, Fly, Fly Facing, Front Pocket Facing, and Front Pocket Backing. It will be marked on the inside of the fabric. It is the marked down with the glue side facing up, then place your pattern down and cut around the perimeter of each piece and notch.
8. Cut the Front Pocket Bag out of a lighter packing material. If you are not using a packing material, then the Front Pocket Bag may be cut alongside your other pattern pieces. Folding is used to make back as one of thicker material - You will find an example of packing on any pair of blue jeans.

NOTE A: FABRIC LESS THAN 54" WIDE
 If your fabric is less than 54" wide you will need to cut each pattern piece vertically from the paper template and sew a seam down the side. This seam will be visible and must be placed on the side facing out in sewing the pattern pieces on the piece of material used. The pattern measurements are given for one of the pieces in each pattern piece for ease of use. To find the greatest matching length for the length for both the pieces, it will be the length of the longer piece. The pieces are cut out. These two pieces are then joined together at the side. To ensure that they are joined across the direction from the top edge to the edge of the fabric, then match the same distance with the bottom piece. When the top and bottom pieces are together from the edge of one fabric then the pattern piece is correctly positioned.

NOTE B: FABRIC WITH NAP OR DIRECTIONAL PRINT
 For fabric with a nap, such as velvet or corduroy, fabric with a clear directional print or the marking repeat, such as a plaid, you will need to cut the pattern pieces individually. Each piece must be cut from the same direction. The solid black lines found on each pattern piece are the nap direction.

NOTE C: USING FUSIBLE INTERFACING
 Fusible interfacing is a material that is used to stabilize, strengthen, and stabilize certain pieces in a garment. While the use of fusible interfacing is allowed, the Recommended Sewing Instructions apply to each pattern piece and must be followed in the construction of JUMPSUIT.



Before cutting your fabric measure this square to make sure that the pattern is scaled correctly*
 *Some printers and software will automatically scale large scale images which will affect the fit.
 The inner square should measure 4" x 4"
 The outer square should measure 12cm x 12cm