

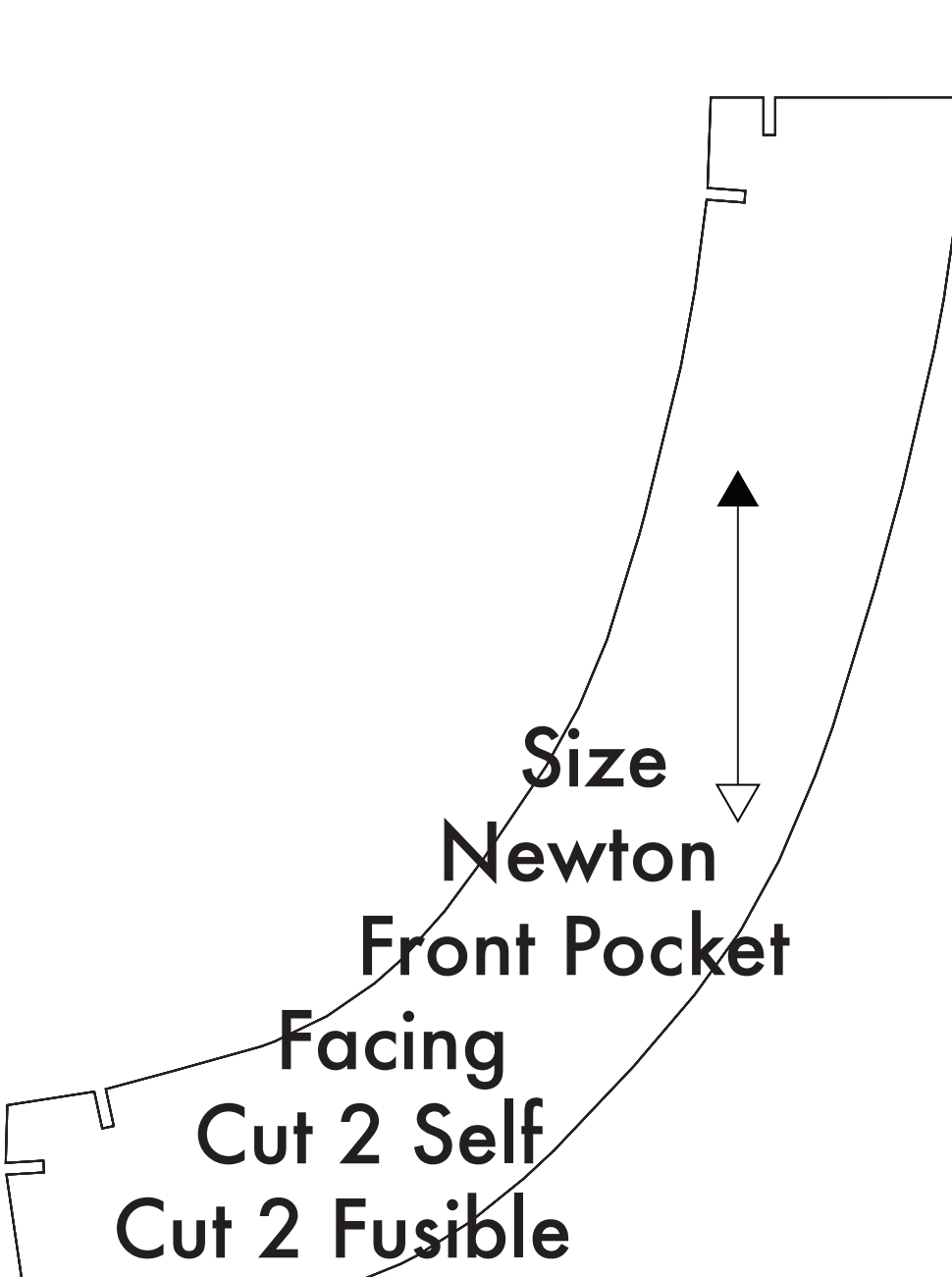
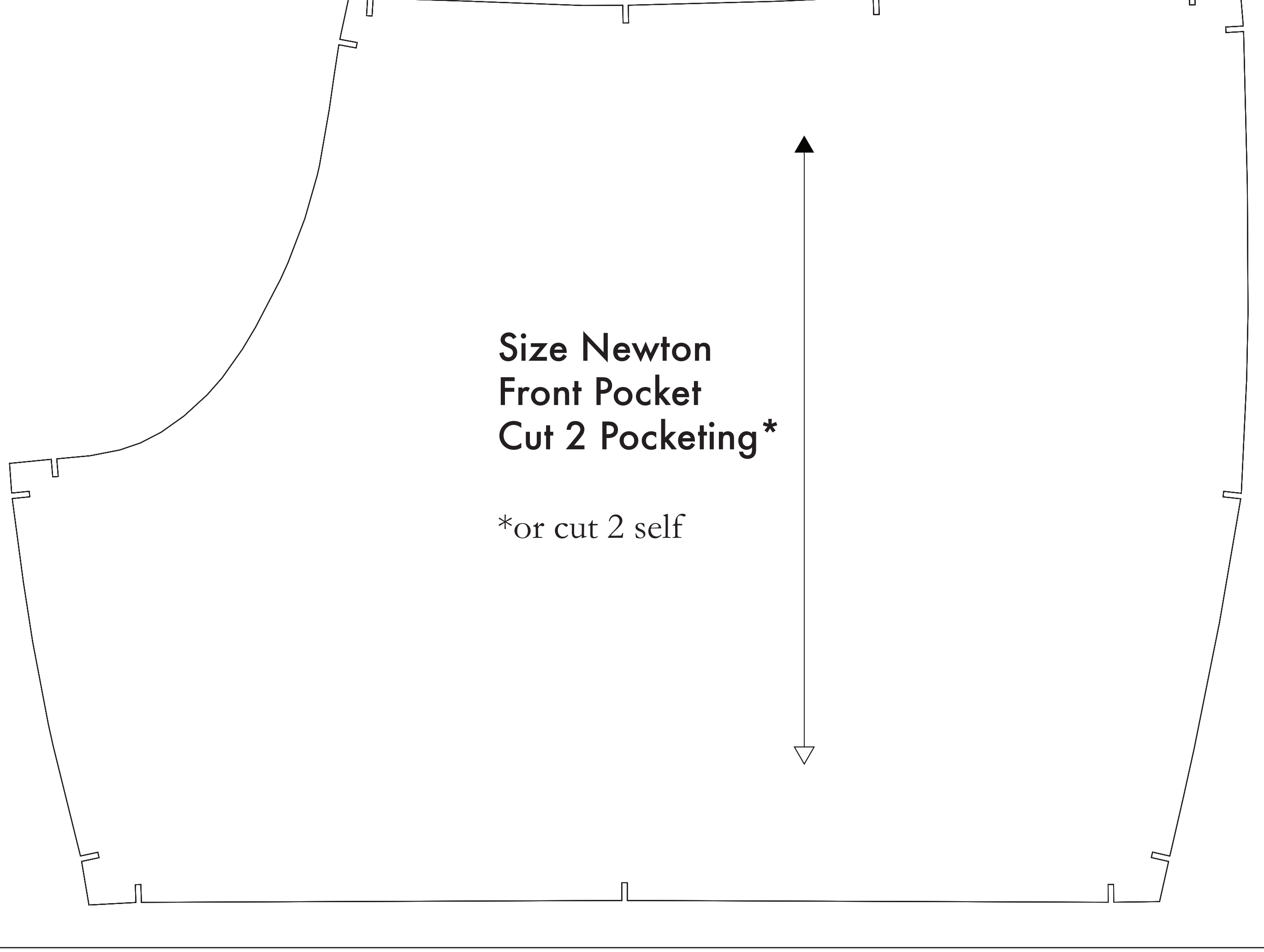
- SUPPLIES NEEDED**
- 3 1/4 YARDS OF 54" WIDE FABRIC
  - SHARP SCISSORS
  - REMOVABLE MARKING MEDIUM (chalk, wax, tailor's hawk, etc.)
  - 1 1/2" NOISE-REDUCKING ZIPPER
  - THREAD
  - SEWING MACHINE
- optional:
- 1/2 YARD OF THINNER POCKET FABRIC
  - FUSIBLE INTERFACING

- CUTTING INSTRUCTIONS**
1. Print pattern. You can print this document right on sheets of standard size paper and tape the pieces together, or print on a wide-format printer (60" or wider). Print sheets either in landscape or approximately 50%. If available, use the PDF recommendations below for printing.
  2. Check your pattern is printed, and double-check the dimensions to ensure any excess paper. This template should fit within a 34" wide or larger piece of fabric that has been folded in half. If your fabric is less than 34" wide, see NOTE A. Use measurement tools that measure in half inches that have one face as adhesive. The fabric with long marks as vertical or horizontal or fabric with a clear directional print such as plaid or stripes. If you are using the self-lined edge of fabric, the narrow border keeps the fabric from unraveling or fraying. Offsets for an edge that smooths into a hem, such as a collar or a pocket, should be marked on the fabric with the side of the paper marked "folded edge."
  3. Fold your fabric in half along the long edge from marking to the side edge. Subdivide it in the middle with a line from the top edge down to the bottom edge. Mark the center of the fold with a vertical line. Place the paper template on top of your fabric, matching the folded edge of the fabric with the side of the paper marked "folded edge."
  4. Trace the pieces through the template pinning together both layers of fabric as well as the paper.
  5. Cut around the perimeter of each piece.
  6. Lay the pieces on a flat surface and smooth out any wrinkles, taking care to not step beyond the end of the U-shaped line.
  7. Marking the pieces with a pencil or other removable, non-permanent tool. A fabric chalk may also be used. This pattern includes some additional tools, which are not included in the kit.
  8. Mark all interior fold lines. Using a pin, bring together both layers of fabric and the pattern, mark the center of each fold line with chalk, wax or other removable, non-permanent tool. A fabric chalk may also be used. This pattern includes some additional tools, which are not included in the kit.
  9. OPTIONAL: Use fusible interfacing pieces (see the notes below). Pattern pieces that use fusible will be marked with the direction "Cut 1 Fusible" or "Cut 2 Fusible". These pieces are the Collar, Fly, Fly Facing, Front Pocket Facing, and Front Pocket Backing. To cut the fusible, lay the marked fabric with the glue side facing up, then place your pattern down and cut around the perimeter of each piece and mark.
  10. Care the Front Pocket Bag out of a lighter packing material. If you are using packing material, then the Front Pocket Bag may be cut along with your other pattern pieces. Including it and in a new bag in case of disaster material. You will not see examples of packing in any part of this pattern.

**NOTE A: FABRIC LESS THAN 34" WIDE**  
 If your fabric is less than 34" wide, you will need to use a wider piece of fabric and use a wider piece of fabric. The pattern pieces are designed to fit within a 34" wide or larger piece of fabric. If your fabric is less than 34" wide, you will need to use a wider piece of fabric. The pattern pieces are designed to fit within a 34" wide or larger piece of fabric. If your fabric is less than 34" wide, you will need to use a wider piece of fabric. The pattern pieces are designed to fit within a 34" wide or larger piece of fabric.

**NOTE B: FABRIC WITH NAP OR DIRECTIONAL PATTERN**  
 For fabric with a nap such as velvet or corduroy, fabric with a directional pattern such as plaid or stripes, or fabric with a directional pattern such as plaid or stripes, you will need to use the pattern pieces individually for the front and back pieces, ensuring that the side block arrow brand on each pattern piece is in the same direction.

**NOTE C: USING FUSIBLE INTERFACING**  
 Fusible interfacing is a material that is used to stabilize, strengthen, and reduce stretch in a garment. When the word "fusible interfacing" is printed on the pattern piece, you will need to use the pattern piece with the fusible interfacing on the side of the fabric that is marked "fusible" or "interfacing".



Before cutting your fabric measure this square to make sure that the pattern is scaled correctly\*  
 \*Some printers and software will automatically scale large scale images which will affect this size.

The inner square should measure 4" x 4"  
 The outer square should measure 12cm x 12cm

