

- SUPPLIES NEEDED**
- 1/2 YARDS OF 54" WIDE FABRIC
 - SHARP SCISSORS
 - REMOVABLE MARKING MEDIUM (chalk, wax, tailor's tack, etc.)
 - 1 - 26" NON-SEPARATING ZIPPER
 - THREAD
 - SEWING MACHINE (optional)
 - 1/2 YARD OF THINNER POCKET FABRIC
 - FUSIBLE INTERFACING

CUTTING INSTRUCTIONS

1. Print pattern. You can print the documents out on sheets of standard size paper and tape the pieces together, or print on a wide-format printer (36" or wider). Print sheets after the service for approximately 82. If available to you, the B&W recommends wide format printing.
2. Check your pattern is printed, cut along the outermost markings to remove any excess paper. This template should fit exactly on a 54" wide or larger piece of fabric that has been folded in half. If your fabric is less than 54" wide:
 - **NOTE A:** For maximum detail this pattern is laid out for fabric that does not have a direction. For fabric with a nap, such as velvet or corduroy or fabric with a clear directional print, use **NOTE B**.
 - **NOTE B:** For maximum detail this pattern is laid out for fabric that does not have a direction. For fabric with a nap, such as velvet or corduroy or fabric with a clear directional print, use **NOTE C**.
3. Fold your fabric in half along the lengthwise grain matching selvage edge to selvage edge. Schedule in the self-finished edge of fabric. This narrow border keeps the fabric from unraveling or fraying. Often it has an edge that resembles raw fringe, though like a hem, a self-finished line will be found. Avoid this edge as you cut pieces as the texture frequently differs from the main body of the fabric.
4. Place the paper template on top your fabric, matching the folded edge of the fabric with the side of the paper marked "Folded edge."
5. Trace your pieces throughout the complete printing together both layers of fabric as well as the paper.
6. Cut around the perimeter of each piece.
7. Leaving the pins in place, you will need need to snip each of the notches, taking care to not snip beyond the end of the fabric.
8. **NOTE C:** *Markings are the U-shaped markings that are found throughout the pattern. These markings indicate where to place the zipper, where to place the pocket, and where to place the waistband.*
9. **NOTE D:** *Markings are the U-shaped markings that are found throughout the pattern. These markings indicate where to place the zipper, where to place the pocket, and where to place the waistband.*
10. **NOTE E:** *Markings are the U-shaped markings that are found throughout the pattern. These markings indicate where to place the zipper, where to place the pocket, and where to place the waistband.*
11. **NOTE F:** *Markings are the U-shaped markings that are found throughout the pattern. These markings indicate where to place the zipper, where to place the pocket, and where to place the waistband.*
12. **NOTE G:** *Markings are the U-shaped markings that are found throughout the pattern. These markings indicate where to place the zipper, where to place the pocket, and where to place the waistband.*
13. **NOTE H:** *Markings are the U-shaped markings that are found throughout the pattern. These markings indicate where to place the zipper, where to place the pocket, and where to place the waistband.*
14. **NOTE I:** *Markings are the U-shaped markings that are found throughout the pattern. These markings indicate where to place the zipper, where to place the pocket, and where to place the waistband.*
15. **NOTE J:** *Markings are the U-shaped markings that are found throughout the pattern. These markings indicate where to place the zipper, where to place the pocket, and where to place the waistband.*
16. **NOTE K:** *Markings are the U-shaped markings that are found throughout the pattern. These markings indicate where to place the zipper, where to place the pocket, and where to place the waistband.*
17. **NOTE L:** *Markings are the U-shaped markings that are found throughout the pattern. These markings indicate where to place the zipper, where to place the pocket, and where to place the waistband.*
18. **NOTE M:** *Markings are the U-shaped markings that are found throughout the pattern. These markings indicate where to place the zipper, where to place the pocket, and where to place the waistband.*
19. **NOTE N:** *Markings are the U-shaped markings that are found throughout the pattern. These markings indicate where to place the zipper, where to place the pocket, and where to place the waistband.*
20. **NOTE O:** *Markings are the U-shaped markings that are found throughout the pattern. These markings indicate where to place the zipper, where to place the pocket, and where to place the waistband.*
21. **NOTE P:** *Markings are the U-shaped markings that are found throughout the pattern. These markings indicate where to place the zipper, where to place the pocket, and where to place the waistband.*
22. **NOTE Q:** *Markings are the U-shaped markings that are found throughout the pattern. These markings indicate where to place the zipper, where to place the pocket, and where to place the waistband.*
23. **NOTE R:** *Markings are the U-shaped markings that are found throughout the pattern. These markings indicate where to place the zipper, where to place the pocket, and where to place the waistband.*
24. **NOTE S:** *Markings are the U-shaped markings that are found throughout the pattern. These markings indicate where to place the zipper, where to place the pocket, and where to place the waistband.*
25. **NOTE T:** *Markings are the U-shaped markings that are found throughout the pattern. These markings indicate where to place the zipper, where to place the pocket, and where to place the waistband.*
26. **NOTE U:** *Markings are the U-shaped markings that are found throughout the pattern. These markings indicate where to place the zipper, where to place the pocket, and where to place the waistband.*
27. **NOTE V:** *Markings are the U-shaped markings that are found throughout the pattern. These markings indicate where to place the zipper, where to place the pocket, and where to place the waistband.*
28. **NOTE W:** *Markings are the U-shaped markings that are found throughout the pattern. These markings indicate where to place the zipper, where to place the pocket, and where to place the waistband.*
29. **NOTE X:** *Markings are the U-shaped markings that are found throughout the pattern. These markings indicate where to place the zipper, where to place the pocket, and where to place the waistband.*
30. **NOTE Y:** *Markings are the U-shaped markings that are found throughout the pattern. These markings indicate where to place the zipper, where to place the pocket, and where to place the waistband.*
31. **NOTE Z:** *Markings are the U-shaped markings that are found throughout the pattern. These markings indicate where to place the zipper, where to place the pocket, and where to place the waistband.*

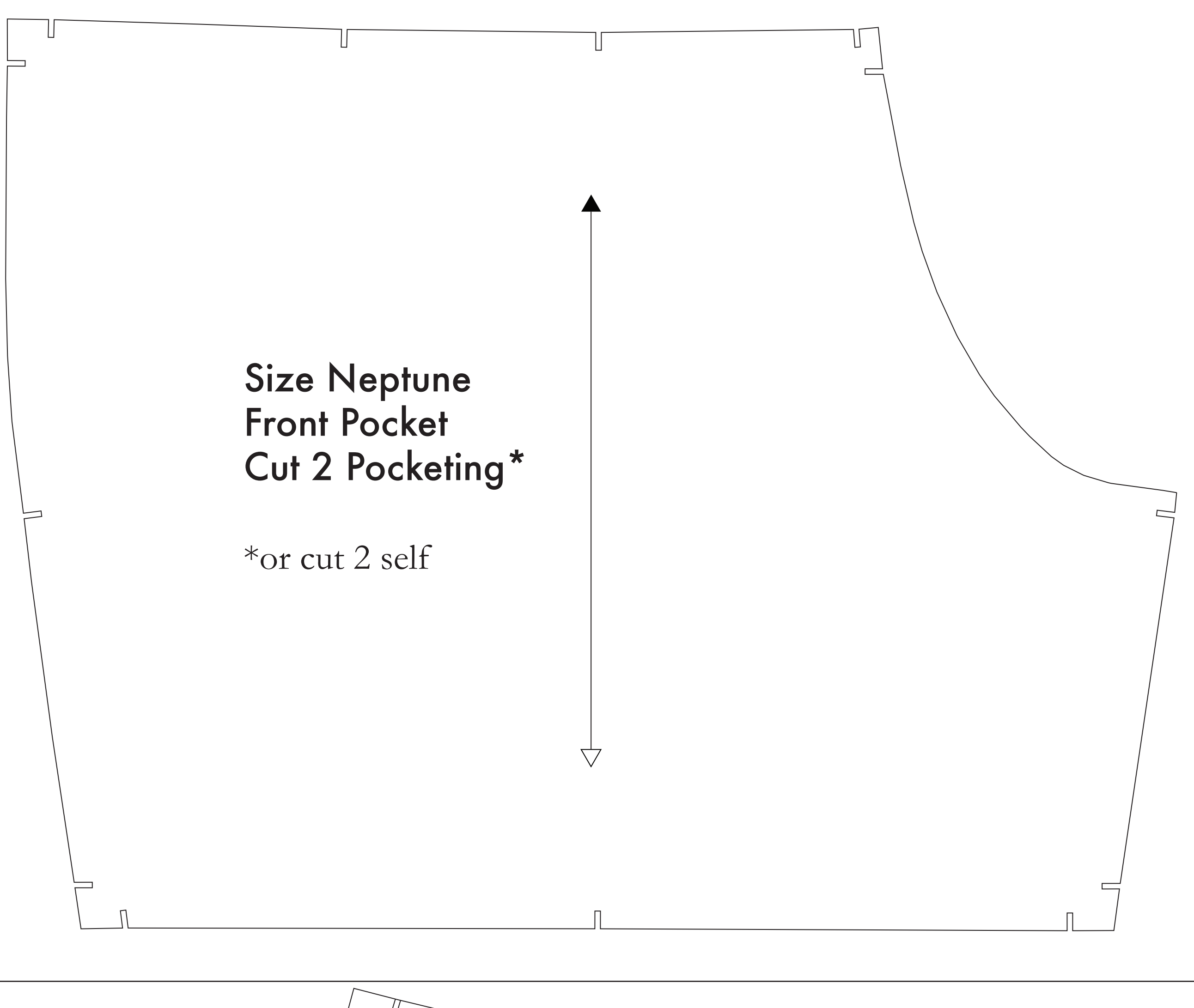
NOTE A: FABRIC LESS THAN 54" WIDE
If your fabric is less than 54" wide you will need to cut your pieces in two halves from the paper template and place a seam in your fabric where you require additional space for the nap. Use the pattern markings to find the length for the nap. Use two pieces of fabric for the nap. The nap should be cut from the side of the fabric. When marking your nap use the two lines that are marked parallel to the selvage edge of your fabric. To ensure the nap is parallel reduce the distance from the top seam piece to the edge of the fabric that marks the nap. Please refer to the diagram below for an example of how to cut your pieces in two halves.

NOTE B: FABRIC WITH NAP OR DIRECTIONAL PATTERN
For fabric with nap, such as velvet or corduroy, fabric with a clear directional print, or for marking tapes, use the markings that are found on the pattern piece. Markings that are found on the fabric, covering the 26" wide back, were found on each pattern piece in the non-directional.

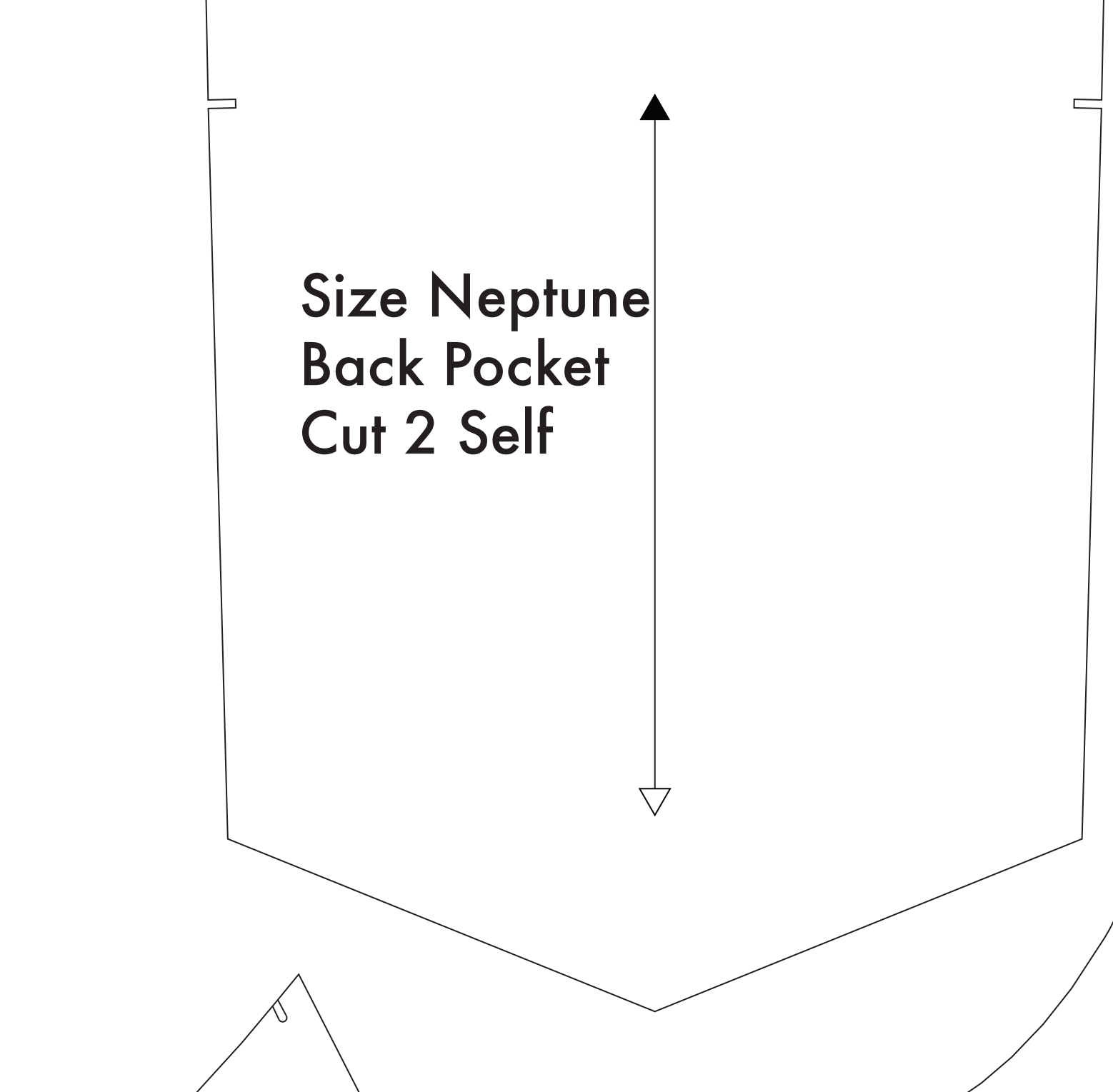
NOTE C: USING FUSIBLE INTERFACING
Fusible interfacing is a material that is used to stabilize, strengthen and add extra support to a garment. Based on the fabric you are using, you may need to use fusible interfacing. Please refer to the instructions of the interfacing for more information.

Size Neptune Front Pocket Cut 2 Pocketing*

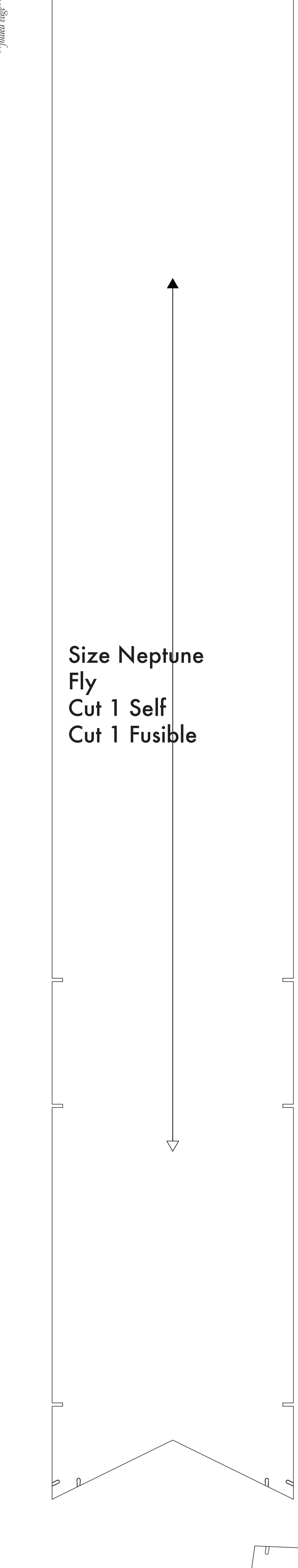
*or cut 2 self



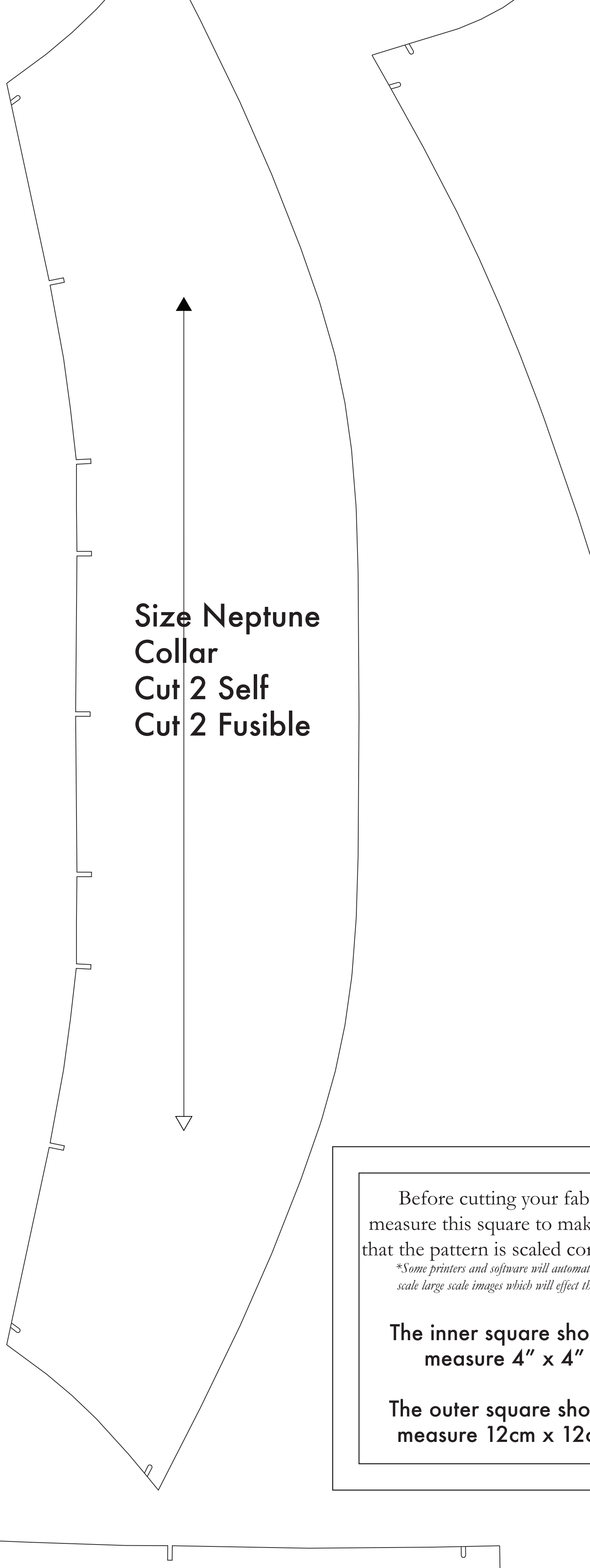
Size Neptune Back Pocket Cut 2 Self



Size Neptune Fly Cut 1 Self Cut 1 Fusible



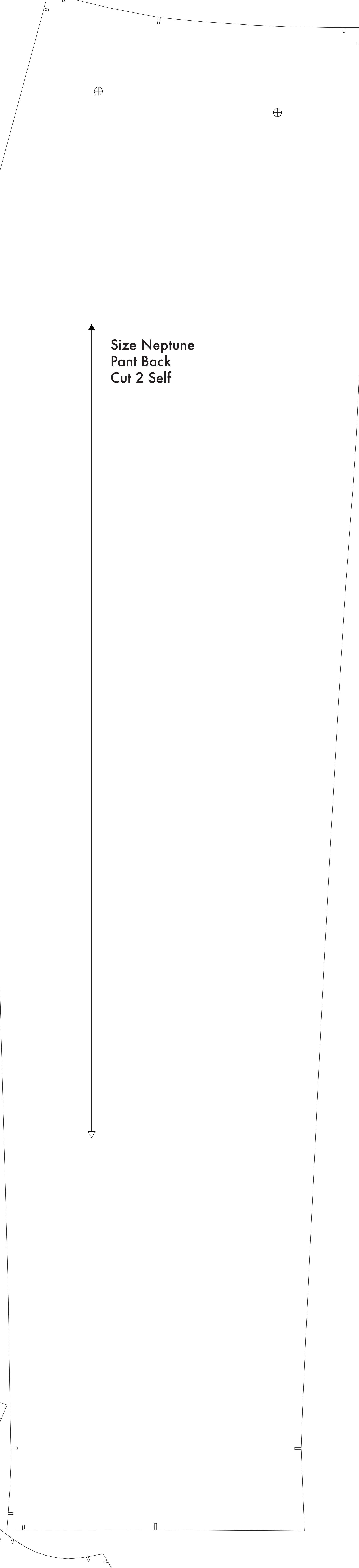
Size Neptune Collar Cut 2 Self Cut 2 Fusible



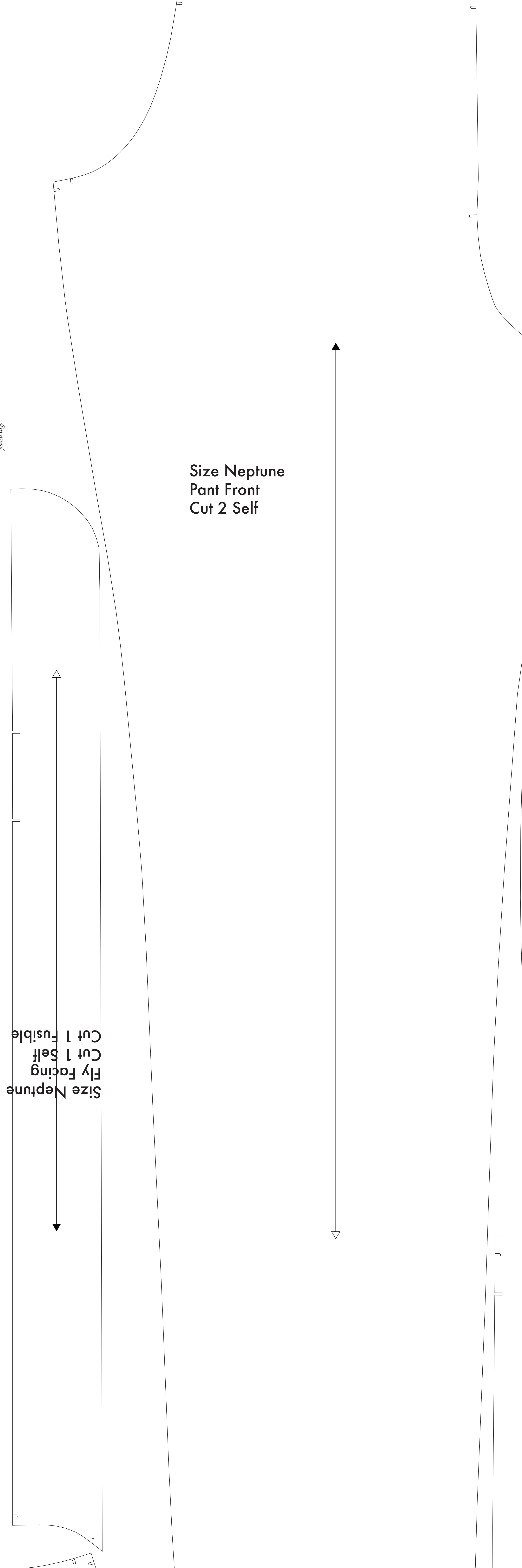
Before cutting your fabric measure this square to make sure that the pattern is scaled correctly*
**Some printers and software will automatically scale large scale images which will affect the fit.*

The inner square should measure 4" x 4"
The outer square should measure 12cm x 12cm

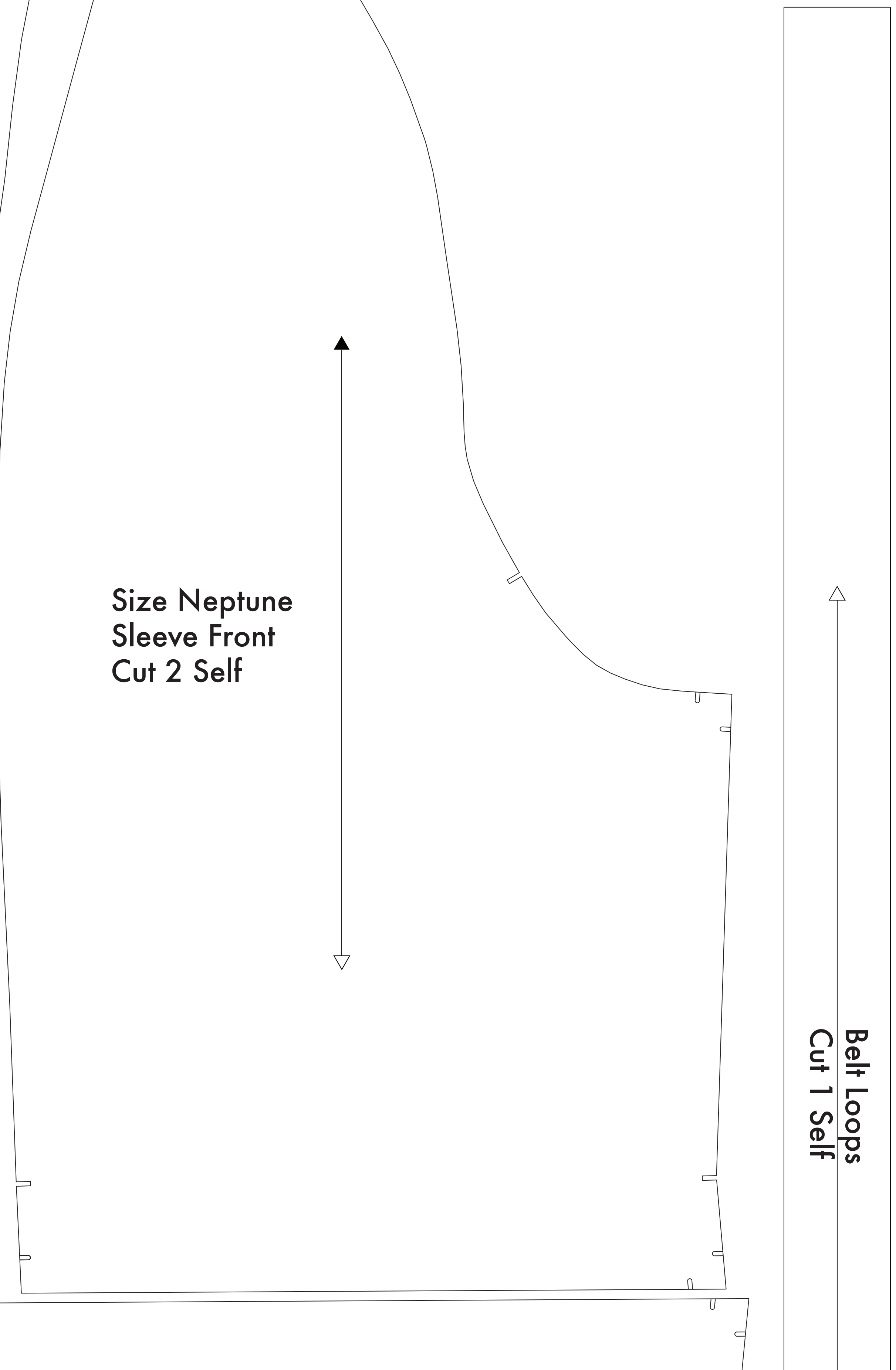
Size Neptune Pant Back Cut 2 Self



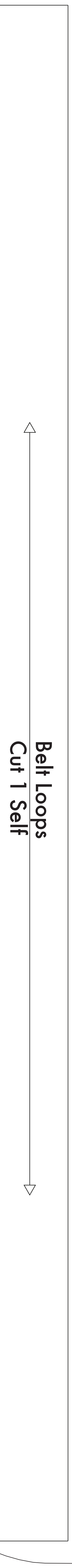
Size Neptune Pant Front Cut 2 Self



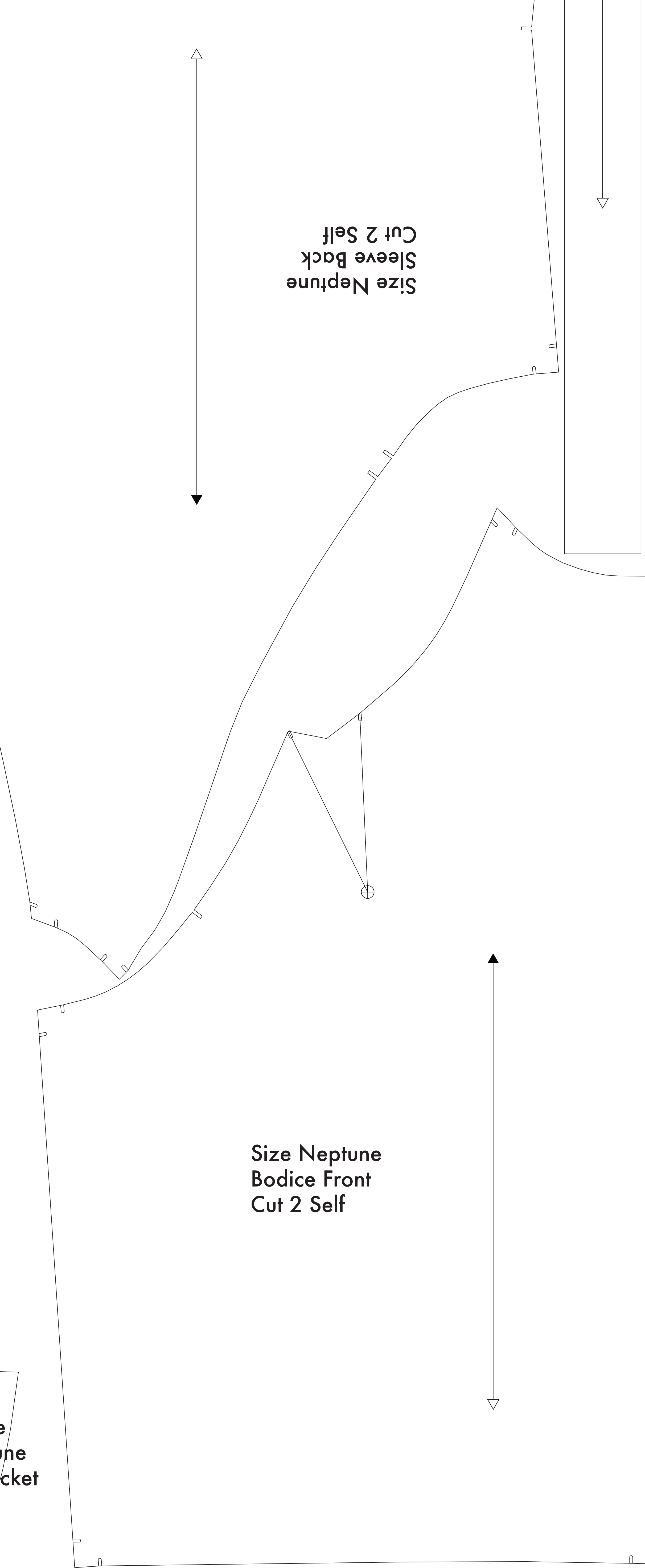
Size Neptune Sleeve Front Cut 2 Self



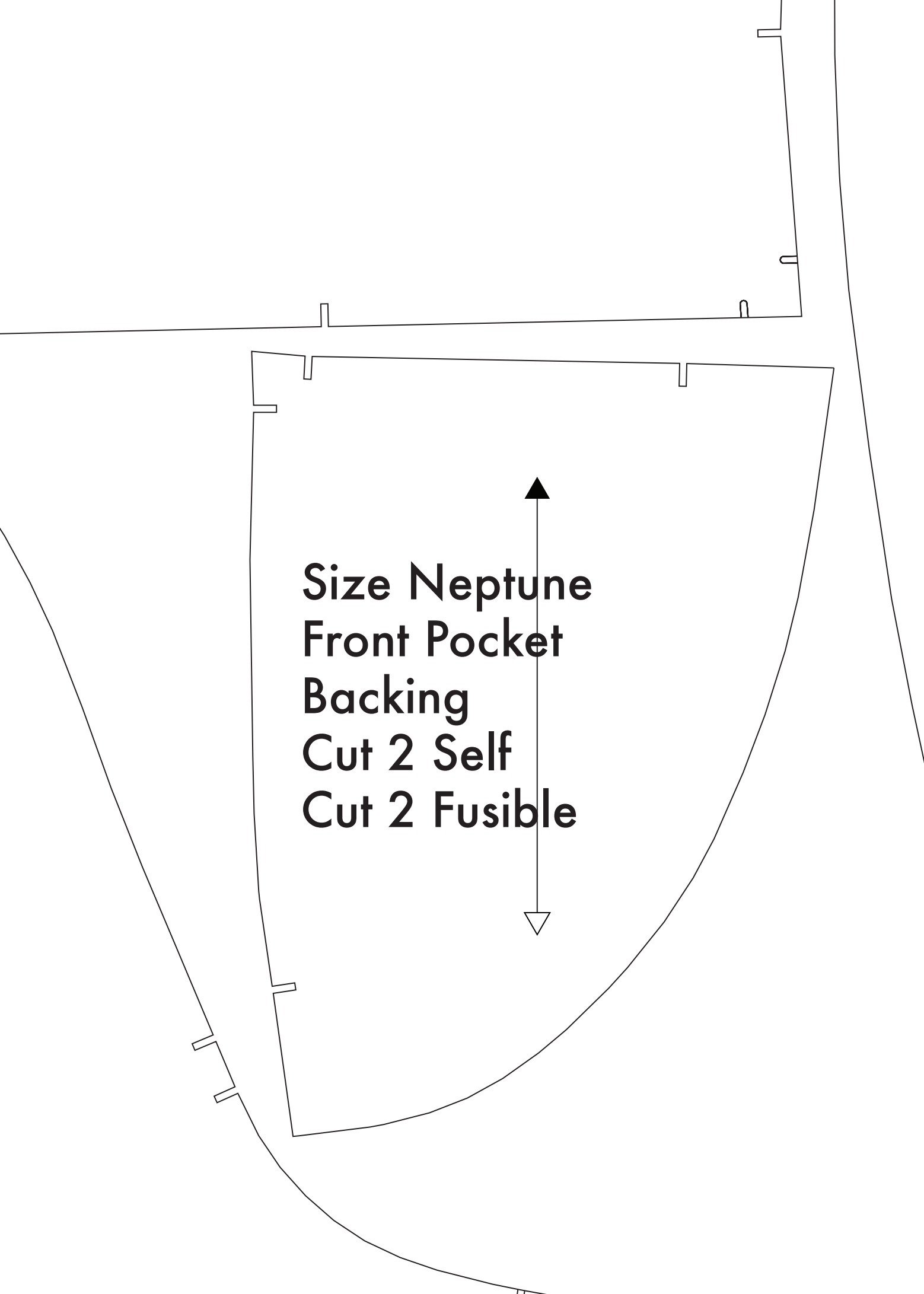
Belt Loops Cut 1 Self



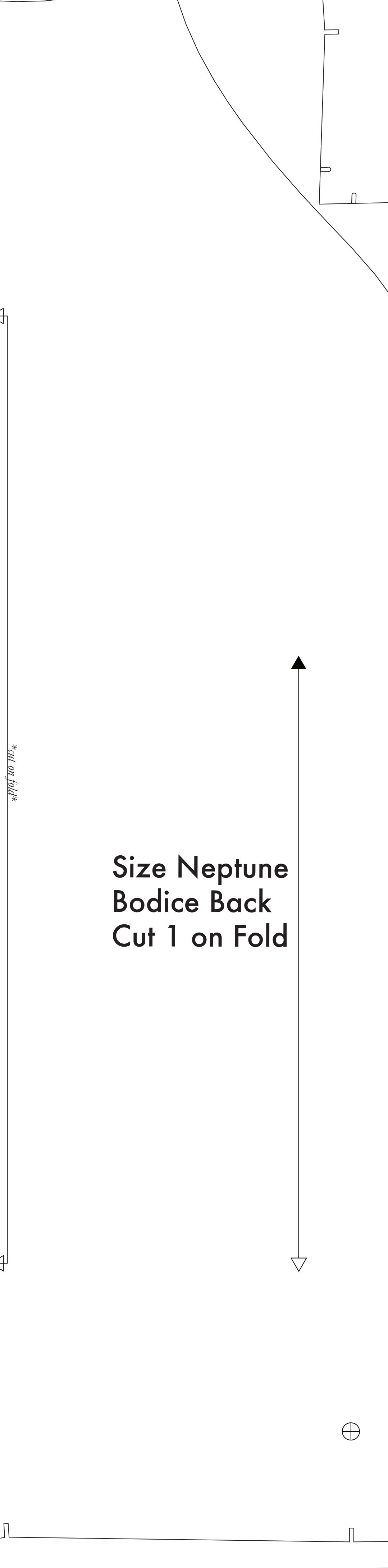
Size Neptune Sleeve Back Cut 2 Self



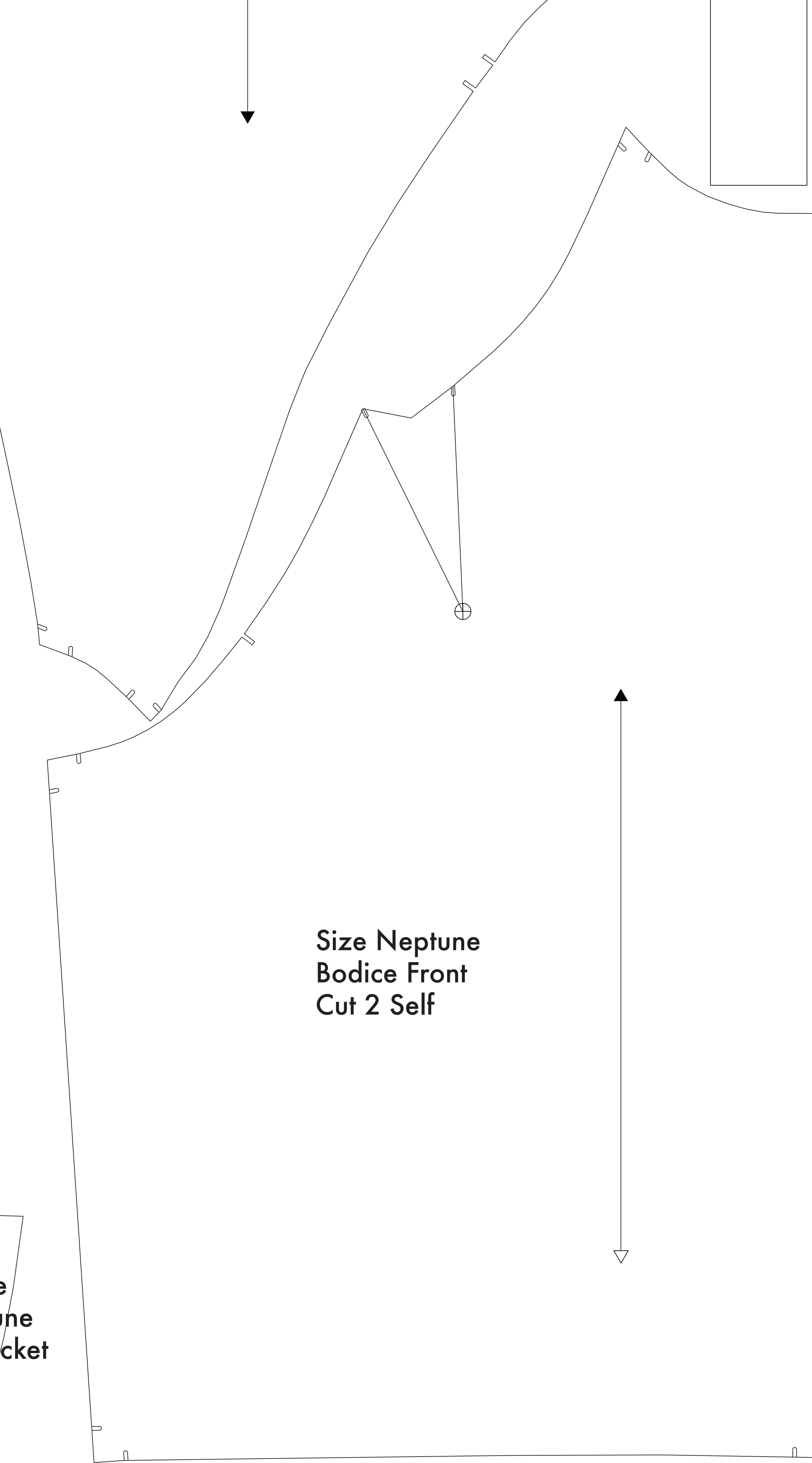
Size Neptune Front Pocket Backing Cut 2 Self Cut 2 Fusible



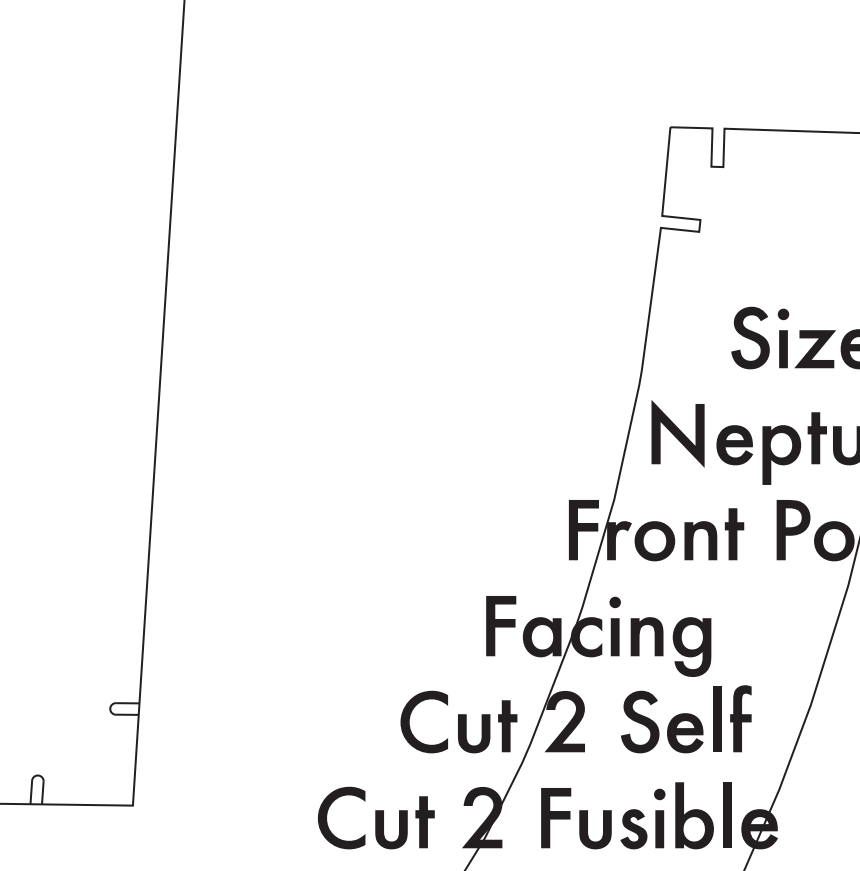
Size Neptune Bodice Front Cut 1 on Fold



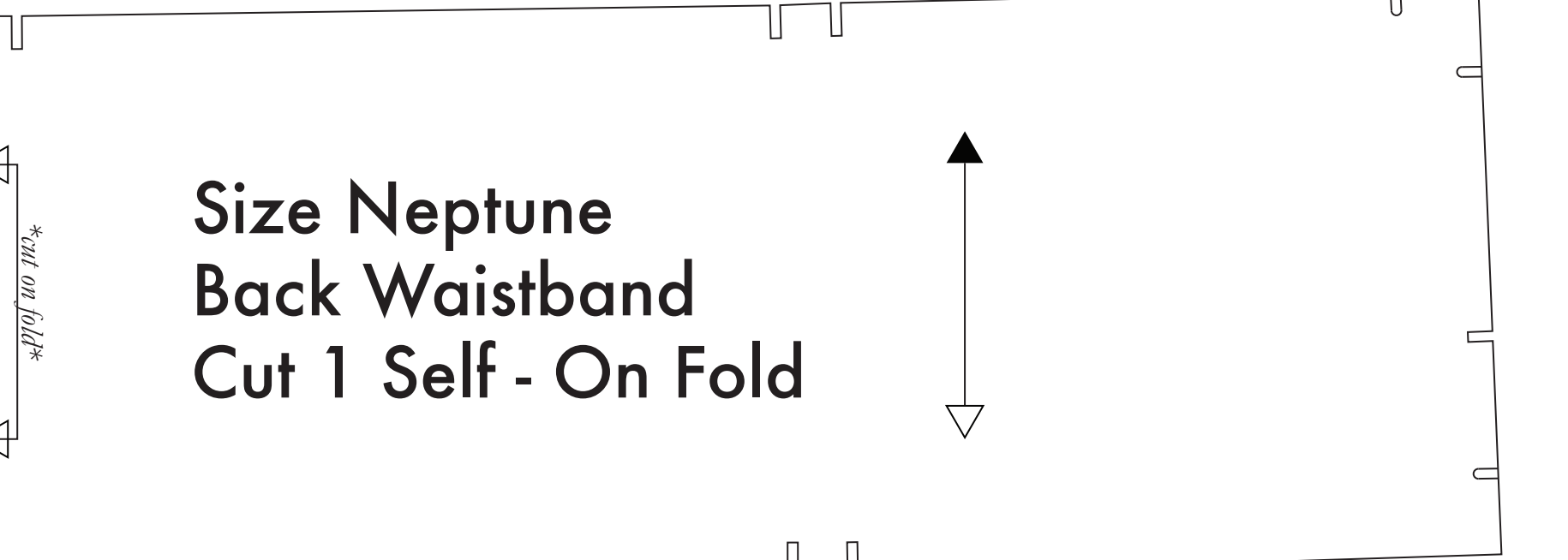
Size Neptune Bodice Front Cut 2 Self



Size Neptune Front Pocket Facing Cut 2 Self Cut 2 Fusible



Size Neptune Back Waistband Cut 1 Self - On Fold



Size Neptune Front Waistband Cut 2 Self

