

- SUPPLIES NEEDED**
- 3 1/2 YARDS OF 54" WIDE FABRIC
 - REMOVABLE MARKING MEDIUM (Chalk, wax, tailor's tack, etc.)
 - 1/2" NONSEAMING ZIPPER
 - THREAD
 - SEWING MACHINE
- optional:**
- 1/2 YARD OF THINNER POCKET FABRIC
 - FUSIBLE INTERFACING

CUTTING INSTRUCTIONS

1. Trace pattern. Use one piece from document tiled on sheets of standard size paper and tape the pieces together, or print on a wide-format printer (30" or wider). Print sheets after the service for approximately \$12. If available to you, the B2B measurements with format printing.
2. Trace your pattern to pencil, cut along the outermost rectangle to remove any excess paper. This template should fit exactly over 1/2" wide or larger pieces of fabric that have been folded in half. If your fabric is less than 1/2" wide:
 - NOTE A:** For maximum fit, the pattern is laid out for fabric that does not have a direction. For fabric with a directional grain, such as corduroy or fabric with clear directional grain, use the pattern in the direction of the grain.
3. Fold your fabric as half along the lengthwise grain matching selvage edge to selvage edge, to help in the identification of fabric. This ensures both layers of fabric from unsewing or tearing. When it has an edge that matches into fringe, though just as frequently a clearly folded line will be found. Avoid this edge in your cut piece as the texture frequently differs from the main body of the fabric.
4. Place the paper template on top layer fabric, matching the folded edge of the fabric with the side of the paper marked "folded edge".
5. Trace your pattern through the template pressing together both layers of fabric as well as the paper.
6. Use around the perimeter of each piece.
7. Transfer the paper to fabric, you will now need to stop each of the notches, taking care to not stop beyond the end of the 1/2" fold.
8. **NOTE B:** If your fabric has a directional grain, such as corduroy, use the pattern in the direction of the grain. Some make make sure always make, with other and left you the grain of your fabric.
9. Mark all notches and folds. Using a pin, bring together both layers of fabric and the pattern, mark the corner of each notched fold with chalk, wax or other removable, non-permanent mark. A tailor's tack may also be used. This marker and fold, or markings, are indicated by the following notes:
 - **NOTE C:** For maximum fit, the pattern is laid out for fabric that does not have a direction. For fabric with a directional grain, such as corduroy, use the pattern in the direction of the grain.
 - **NOTE D:** For maximum fit, the pattern is laid out for fabric that does not have a direction. For fabric with a directional grain, such as corduroy, use the pattern in the direction of the grain.
10. **NOTE E:** For maximum fit, the pattern is laid out for fabric that does not have a direction. For fabric with a directional grain, such as corduroy, use the pattern in the direction of the grain.
11. **NOTE F:** For maximum fit, the pattern is laid out for fabric that does not have a direction. For fabric with a directional grain, such as corduroy, use the pattern in the direction of the grain.
12. **NOTE G:** For maximum fit, the pattern is laid out for fabric that does not have a direction. For fabric with a directional grain, such as corduroy, use the pattern in the direction of the grain.

NOTE A: FABRIC LESS THAN 1/2" WIDE

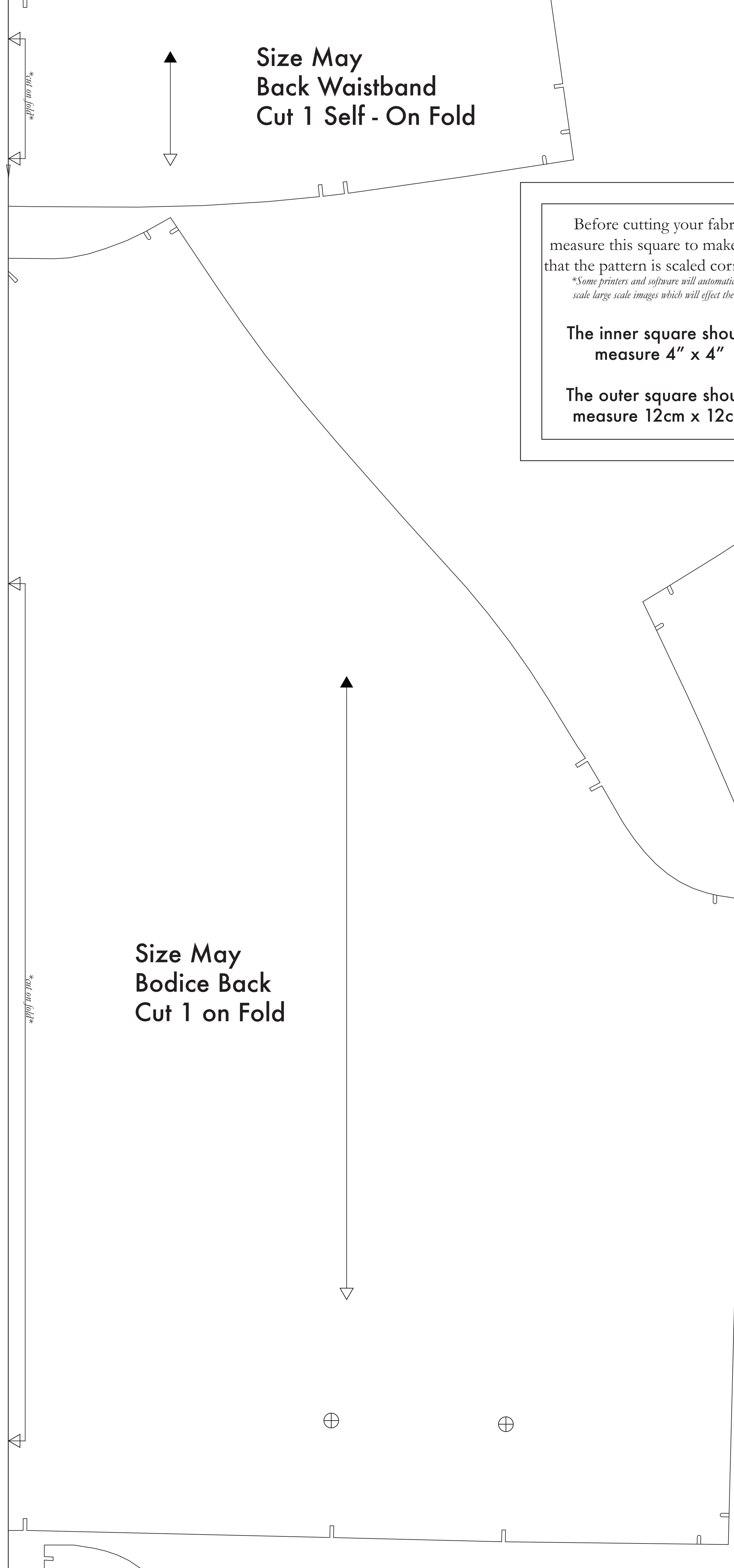
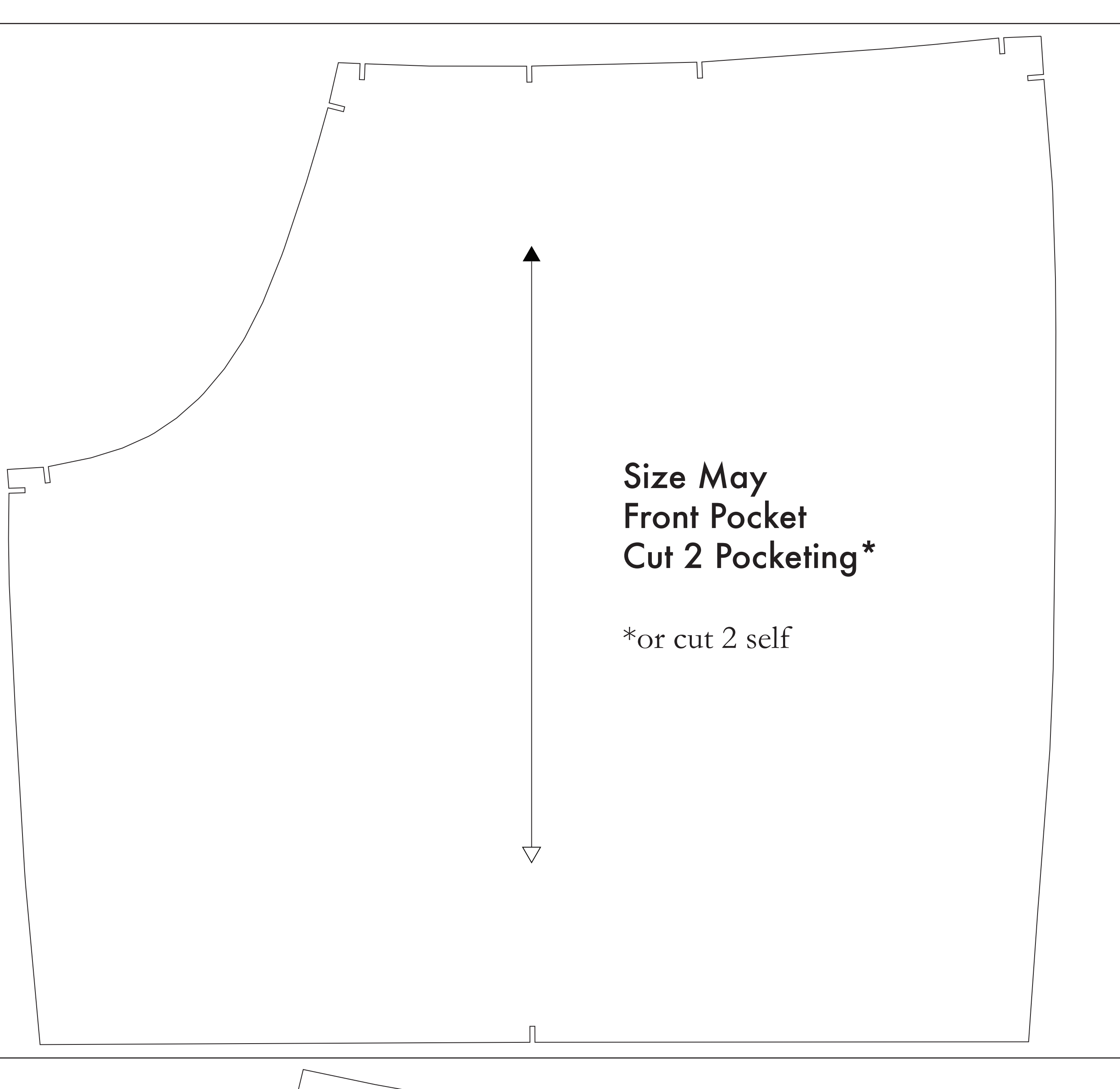
If your fabric is less than 1/2" wide, you will need to use two pieces of fabric side-by-side. Trace the paper template onto the fabric, matching the folded edge of the fabric with the side of the paper marked "folded edge".

NOTE B: FABRIC WITH NAH ON DIRECTIONAL PATTERN

If your fabric has a directional grain, such as corduroy, use the pattern in the direction of the grain. Some make make sure always make, with other and left you the grain of your fabric.

NOTE C: USING FUSIBLE INTERFACING

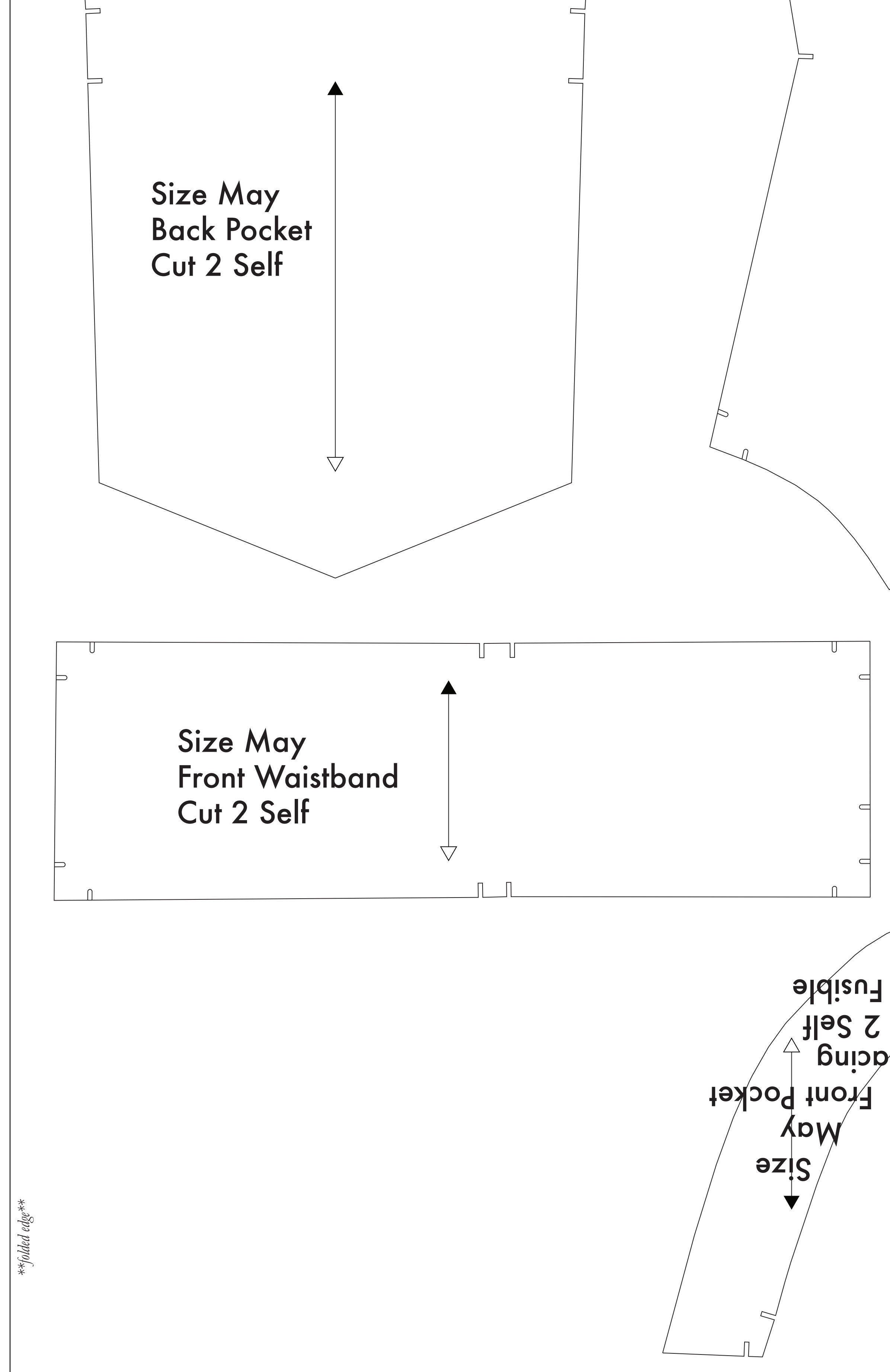
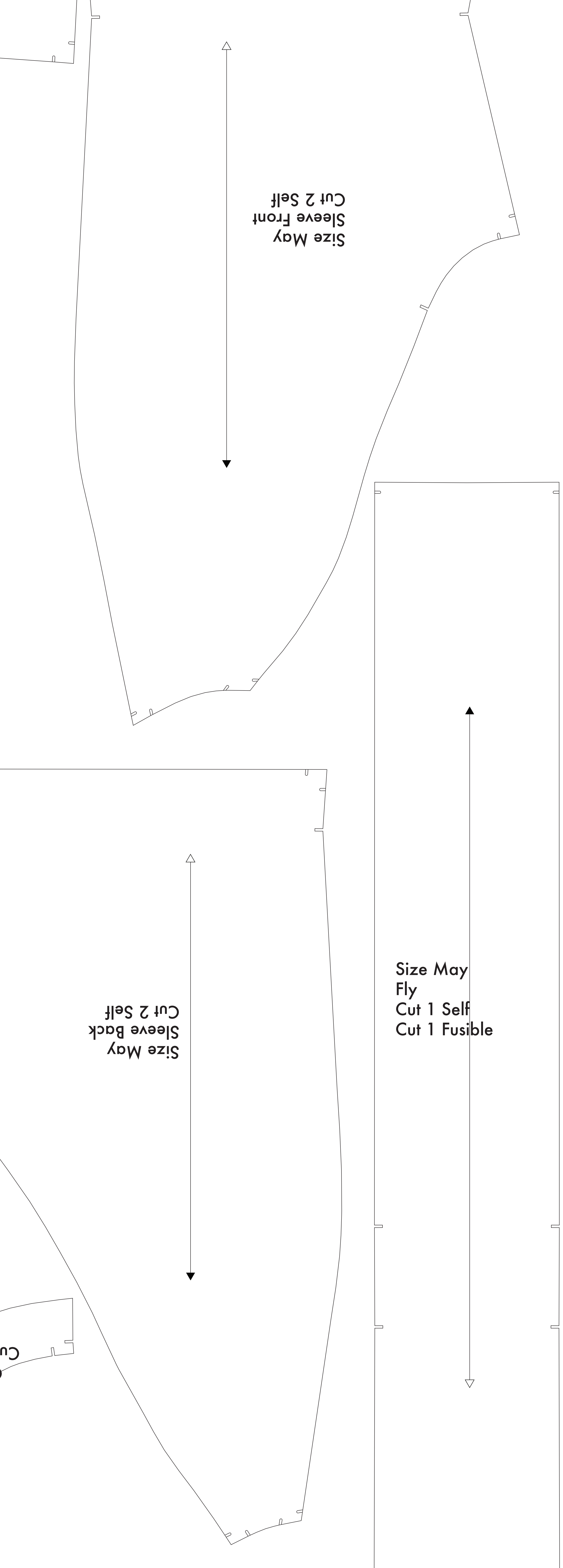
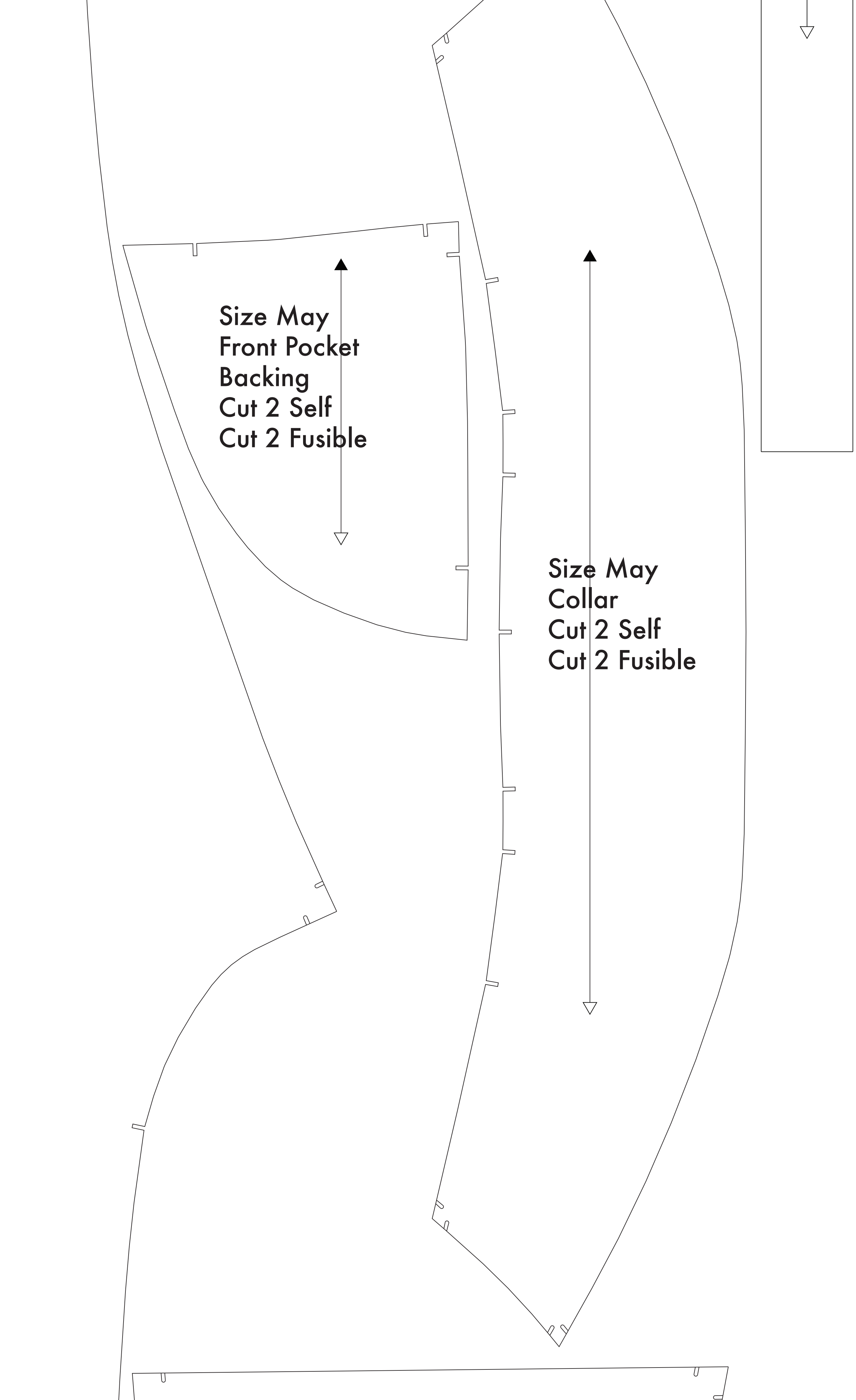
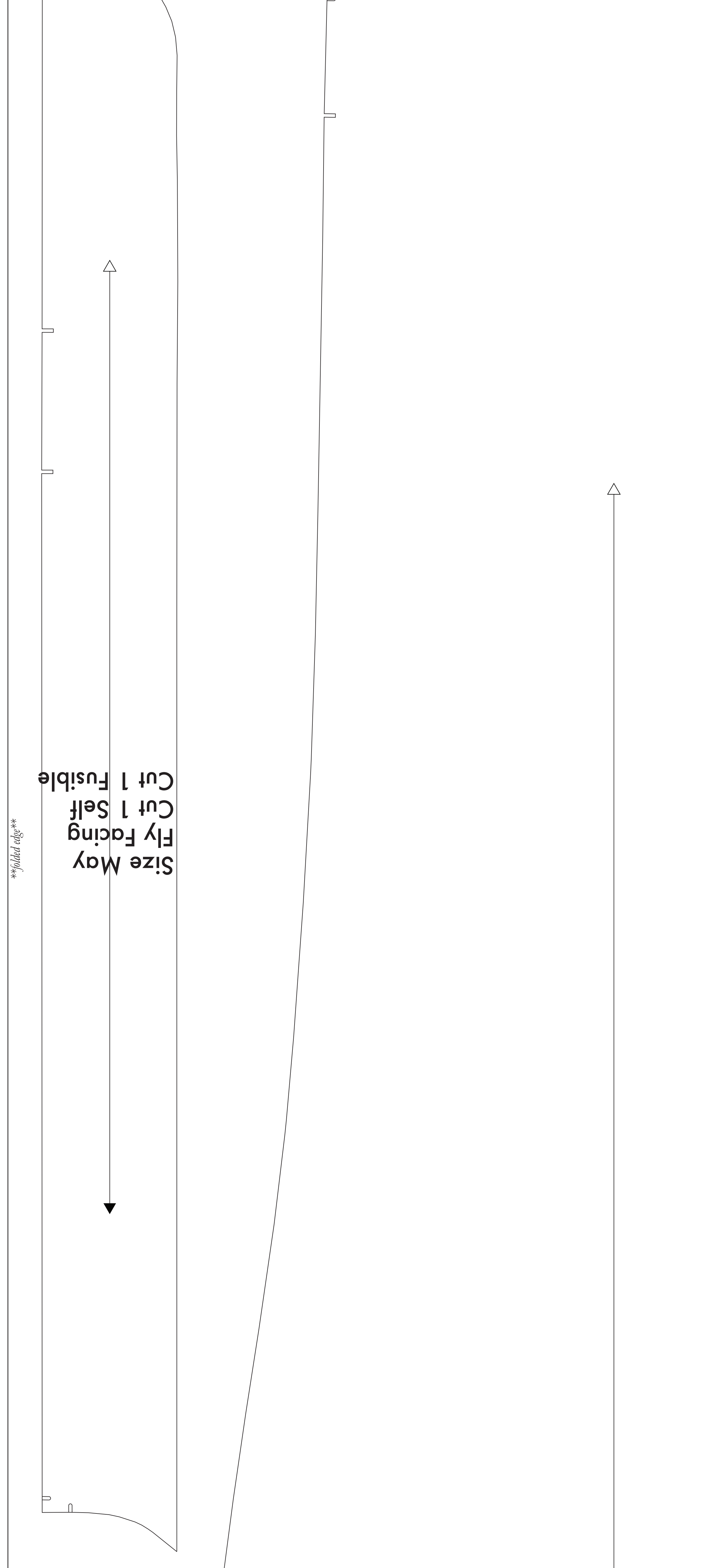
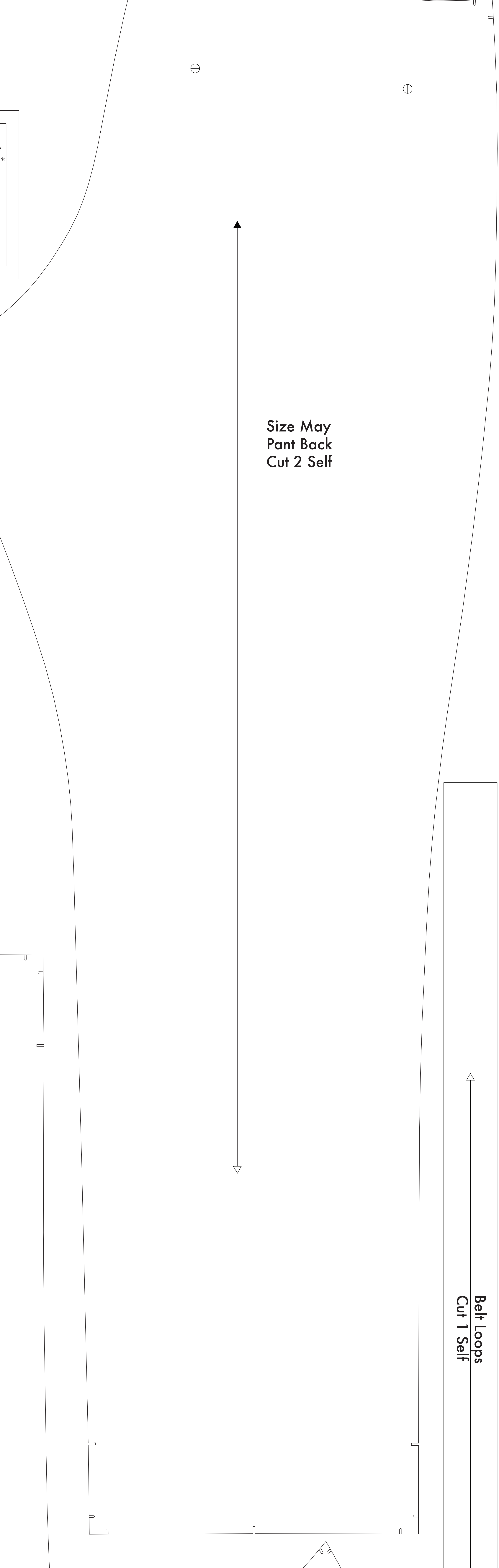
Apply interfacing to a patterned fabric in the direction of the grain. Use the pattern in the direction of the grain. Some make make sure always make, with other and left you the grain of your fabric.



Before cutting your fabric measure this square to make sure that the pattern is scaled correctly*
 *Your printer and software will automatically scale large web images which will affect the fit.

The inner square should measure 4" x 4"

The outer square should measure 12cm x 12cm



Belt Loops Cut 1 Self