



JUMPSUIT CUTTING INSTRUCTIONS
DOCUMENT ID: JUMPSUIT CUTTING INSTRUCTIONS.V1.0

- SUPPLIES NEEDED**
- 3 1/4 YARDS OF 54" WIDE FABRIC
 - SEARS SCISSORS
 - REMOVABLE MARKING MEDIUM (chalk, wax, tailor's mark, etc.)
 - 1/2" NONSEPARATING ZIPPER
 - THREAD
 - SEWING MACHINE
- optional:
- 1/2 YARD OF THINNER POCKET FABRIC
 - FUSIBLE INTERFACING

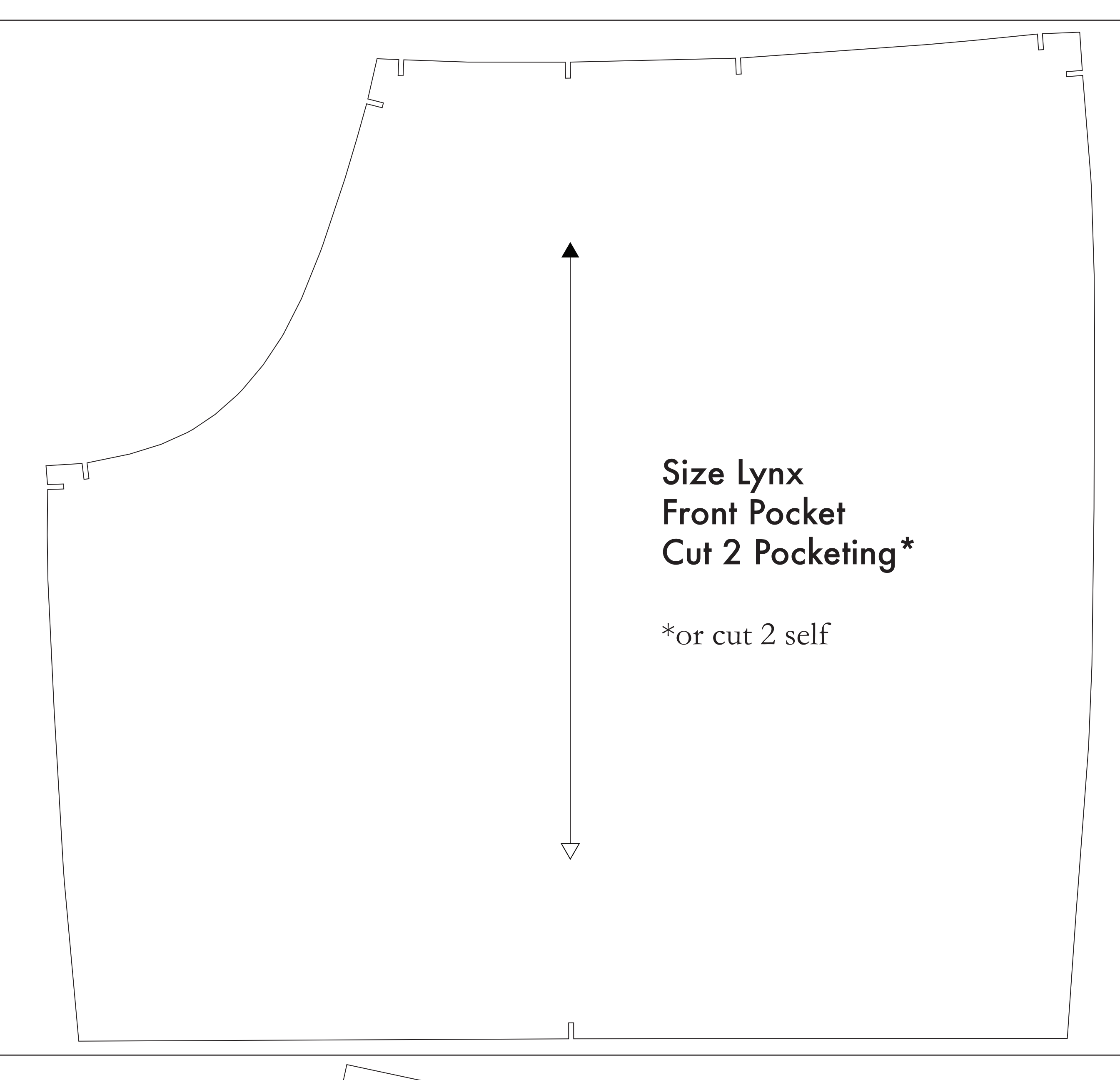
CUTTING INSTRUCTIONS

- Trace pattern. You can print this document (don't use sheets of standard size paper and tape the pieces together) or print on a wide-format printer (36" or wider). First, check for the correct size for approximately \$12. If available to you, the HDN recommended wide-format printing.
- Once your pattern is printed, cut along the outermost rectangle to remove any excess paper. This template should fit exactly on a 54" wide or larger piece of fabric that has been folded in half. If your fabric is less than 54" wide, use **NOTE A**. For maximum yield this pattern is laid out for fabric that does not have a direction. For fabric with a nap, such as velvet or corduroy or fabric with a clear directional grain, use **NOTE B**.
- Hold your fabric in half along the lengthwise grain matching selvage edge to selvage edge. Selvage is the self-finished edge of fabric. This serves to keep the fabric from stretching or fraying. Once it has an edge that resembles any fringe, though just as frequently, a clearly finished line will be found. Around this edge in your cut pieces as the pattern frequently differs from the main body of the fabric.
- Place the paper template on top of your fabric, matching the folded edge of the fabric with the side of the paper marked "folded edge."
- Place pins throughout the template pinning together both layers of fabric as well as the paper.
- Cut around the perimeter of each piece.
- Leaving the pins in place, you will need to snip each of the notches, taking care to not snip beyond the end of the "dog ear".
Notches are **NOT** diagonal markings that are placed throughout the pattern.
Some notches indicate seam allowances which, when sewn will fit just as you pattern pieces with seam.
- Mark all notches and darts. Using a pins, being together both layers of fabric and the pattern, mark the center of each dart back with chalk, wax or other removable, non-permanent mark. A tailor's tack may also be used. These notches and darts or markings are indicated by the following symbol:
They will be found on the Fly, Collar, Body, Back, and all 2-piece pattern pieces for both front and back of the jumpsuit.
- OPTIONAL:** Cut fusible interfacing pieces (see **NOTE C** for more info). Pattern pieces that use fusible will be marked with the direction "Cut 2 Fusible" or "Cut 1 Fusible". These pieces are the Collar, Fly, Fly Facing, Front Pocket Facing, and Front Pocket Pouch. To cut the fusible, lay the material down with the grain side facing up, then place your pattern down and cut around the perimeter of each piece and notch.
- Cut the Front Pocket Bag, not of a higher pocketing material. If you are not using a pocketing material, then the Front Pocket Bag may be cut through your other pattern pieces. Pocketing is used in other parts as well as fusible material - You will find an example of pocketing on any part of the pattern.

NOTE A: FABRIC LESS THAN 54" WIDE
If your fabric is less than 54" wide, you will need to use only one piece of fabric. Lay the paper template out on a flat surface. Cut along the outermost rectangle to remove any excess paper. The paper template should fit exactly on a 54" wide or larger piece of fabric that has been folded in half. If your fabric is less than 54" wide, use **NOTE A**. For maximum yield this pattern is laid out for fabric that does not have a direction. For fabric with a nap, such as velvet or corduroy or fabric with a clear directional grain, use **NOTE B**.

NOTE B: FABRIC WITH NAP OR DIRECTIONAL PATTERN
For fabric with a nap, such as velvet or corduroy, place the paper template on top of your fabric, matching the folded edge of the fabric with the side of the paper marked "folded edge". Place pins throughout the template pinning together both layers of fabric as well as the paper. Cut around the perimeter of each piece.

NOTE C: USING FUSIBLE INTERFACING
Fusible interfacing is a material that is used to reinforce, strengthen and stabilize pattern pieces or garments. Which do not of fusible interfacing applied, the fabric may lose its shape and stretch. Light to medium weight interfacing is used for most fusible markings in the construction of JUMPSUIT.



Before cutting your fabric measure this square to make sure that the pattern is scaled correctly*
**Some printers and printers will automatically make large web images which will affect the fit.*

The inner square should measure 4" x 4"

The outer square should measure 12cm x 12cm

