

- SUPPLIES NEEDED**
- 2 YARDS OF 54" WIDE FABRIC
  - SHARP SCISSORS
  - REMOVABLE MARKING MEDIUM (chalk, wax, tailor's tack, etc.)
  - 1 - 22" NON-SEPARATING ZIPPER
  - THREAD
  - SEWING MACHINE
- OPTIONALS**
- 1/2 YARD OF THINNER POCKET FABRIC
  - FUSIBLE INTERFACING

**CUTTING INSTRUCTIONS**

- Print pattern. You can print this document tiled on sheets of standard size paper and tape the pieces together, or print on a wide format printer (30" or wider). Please also refer to the notes for approximately 1/2". If it is available to you, the RDS recommends wide format printing.
- Once your pattern is printed, cut along the outermost rectangle to remove any excess paper. This template should be equally as 54" wide or larger piece of fabric that has been folded in half. If your fabric is less than 54" wide, use **NOTE A**. For maximum yield this pattern is laid out for fabric that does not have a direction. For fabric with a nap, such as velvet or corduroy or fabric with a clear directional print see **NOTE B**.
- Fold your fabric in half along the longwise grain marking ( selvage edge to selvage edge). Should it have an edge that resembles any fringe, though not as frequently, a clearly folded line will be found. Avoid this edge in your cut pieces as the texture frequently differs from the main body of the fabric.
- Place the paper template on top your fabric, matching the folded edge of the fabric with the side of the paper marked "folded edge".
- Place pins throughout the template pinning together both layers of fabric as well as the paper.
- Cut around the perimeter of each piece.
- Leaving the pins in place, you will next need to snip each of the notches, taking care to not snip beyond the end of the 1/4" clip!

*Notches are the 1/4" depth markings that are found throughout the pattern. Some notches indicate seam allowance notches, which others will help you line up pattern pieces while sewing.*

*The center fold lines, or markings, are indicated by the following symbols:  
⊕ They will be located on the Pant Back, Bodice Back, and Cape pattern.  
⊙ Center has dots (they are used to mark on the Bodice Front).*

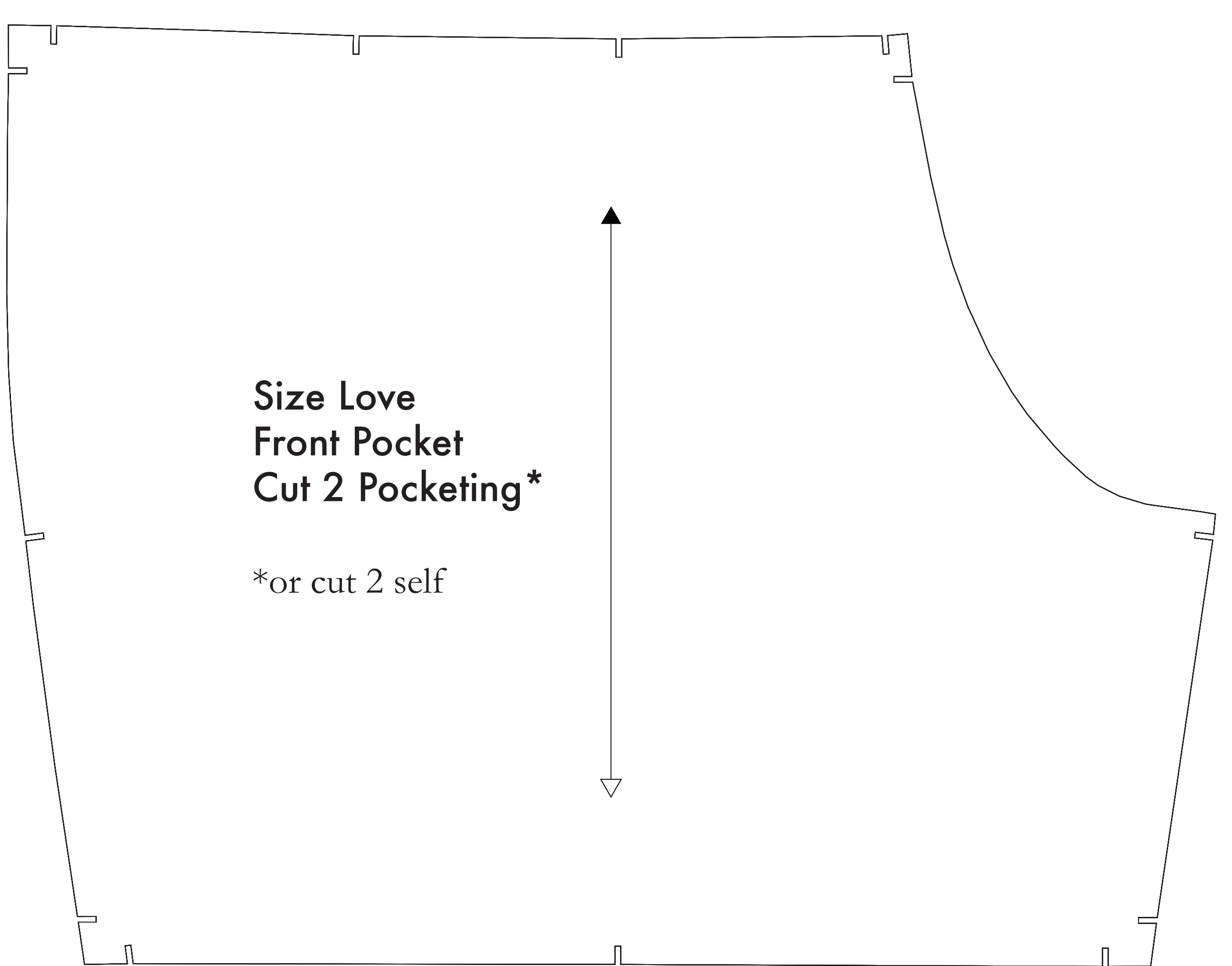
**OPTIONAL:** Cut fusible interfacing pieces (see **NOTE C** for more info). Pattern pieces that use fusible will be marked with the direction "Cut 2 Fusible" or "Cut 1 Fusible". These pieces are the Collar, Fly, Fly Facing, Front Pocket Facing, and Front Pocket Backing. To cut the fusible, lay the material down with the glue side facing up, then place your pattern down and cut around the perimeter of each piece and notch.

For the Front Pocket Bag cut of lighter pocketing material. If you are not using a pocketing material, then the Front Pocket Bag may be cut alongside your other pattern pieces. *Pocketing is used to reduce bulk in cases of thicker material - You will find an example of pocketing on any pair of the jeans.*

**NOTE A: FABRICS LESS THAN 54" WIDE**  
If your fabric is less than 54" wide, you will need to cut out and piece your pattern. Lay out the paper template and make a border on your fabric, taking care to preserve the grain of your fabric. Then, cut out the pieces. The pattern instructions and guidelines are all stated in only pieces that are cut out. To find the pocketing marking both for the right for each new piece, or other. When cutting a border on your fabric, there has to be a seam parallel to the selvage edge of your fabric. To ensure that you are parallel to the selvage edge of the fabric, when cutting a border on your fabric, there has to be a seam parallel to the selvage edge of the fabric. This notch is the same distance from the bottom edge of the fabric, then snip the seam from the bottom edge to the edge of your fabric, then the piece piece is correctly prepared.

**NOTE B: FABRIC WITH NAP OR DIRECTIONAL PATTERN**  
For fabric with nap, such as velvet or corduroy, fabric with a clear directional print, or for marking stripes with a fold, you will need to cut the pattern pieces individually first for then cut on your fabric, ensuring that the fold lines were faced in each pattern piece in the same direction.

**NOTE C: USING FUSIBLE INTERFACING**  
Fusible interfacing is a material that is applied to fabric to give it more structure and support. When the use of fusible interfacing is required, the pattern pieces will be marked with the direction "Cut 2 Fusible" or "Cut 1 Fusible".



Before cutting your fabric measure this square to make sure that the pattern is scaled correctly\*  
*\*Some printers and software will automatically scale large scale images which will affect the fit.*

The inner square should measure 4" x 4"  
The outer square should measure 12cm x 12cm

