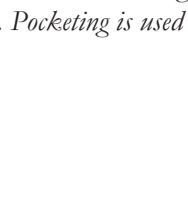
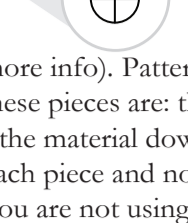
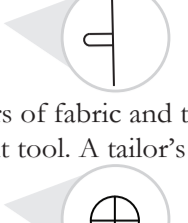


- SUPPLIES NEEDED**
- 3 1/4 YARDS OF 54" WIDE FABRIC
 - SHARP SCISSORS
 - REMOVABLE MARKING MEDIUM (chalk, wax, tailor's tack, etc.)
 - 1" 24" NON-SERRATED ZIPPER
 - THREAD
 - SEWING MACHINE
- optional:
- 1 1/2 YARD OF THINNER POCKET FABRIC
 - FUSIBLE INTERFACING

CUTTING INSTRUCTIONS

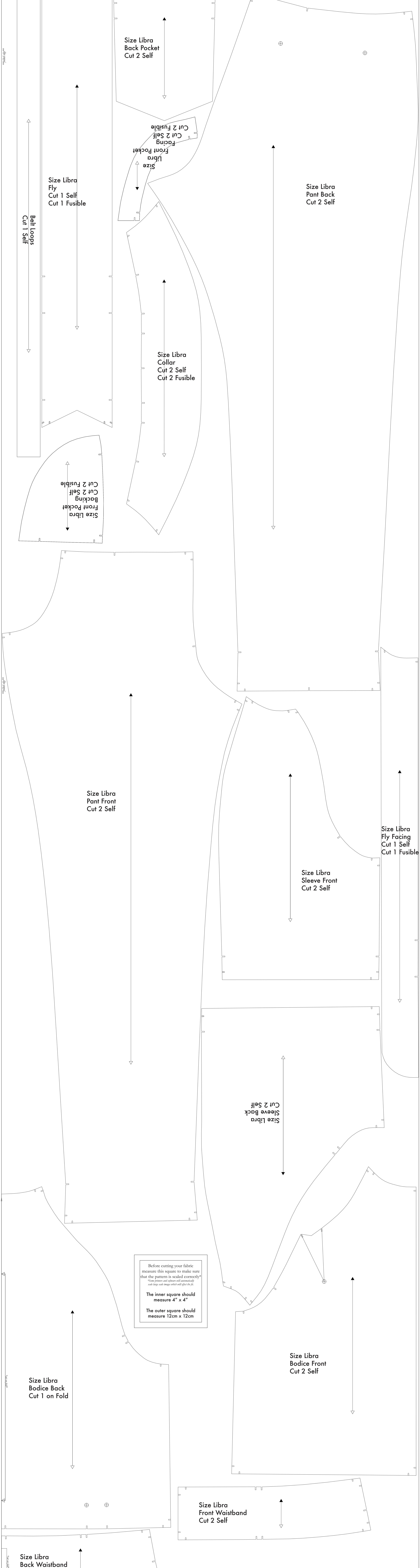
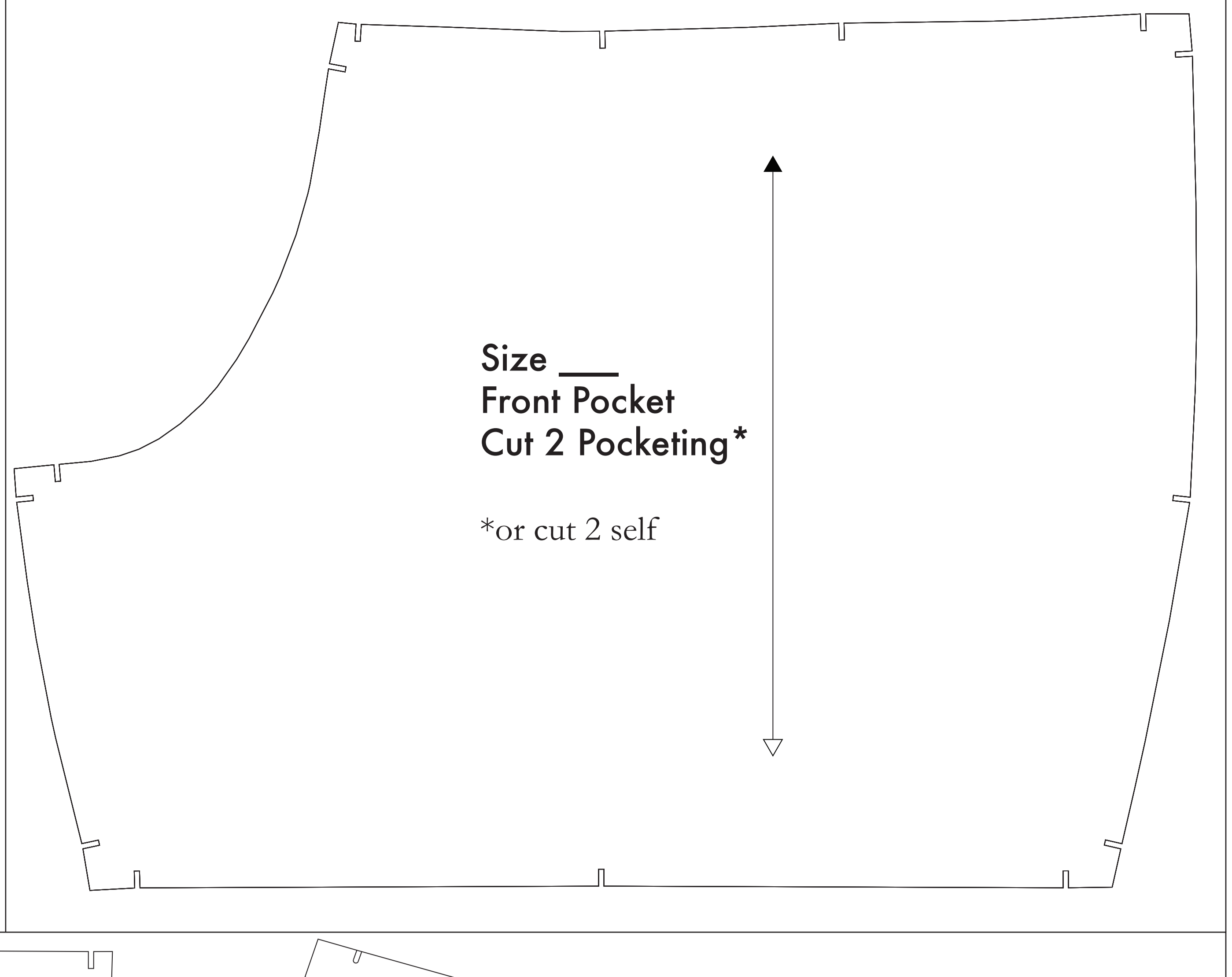
1. Print pattern. You may print this document third on sheets of standard size paper and tape the pieces together, or print on a wide-format printer (30" or wider). Please refer to the notes for approximately 112. If available to you, the BHS recommends wide-format printing.
2. Check your printer's printout, cut along the convenience markings to remove any excess paper. This template should fit comfortably on 54" wide or larger pieces of fabric that has been folded in half. If your fabric is less than 54" wide, see **NOTE A**. For maximum yield the pattern is laid out for fabric that does not have a direction. For fabric with a nap, such as velvet or corduroy, or fabric with clear directional print use the single edge. Schedule in the self-finished edge of fabric. This narrow border keeps the fabric from wrinkling or fraying. Offer it an edge that resembles the fringe through use as frequently as clearly finished edge of the fabric. Avoid this edge to your cut pieces as the texture frequently differs from the main body of the fabric.
3. Place the paper template on top of your fabric, matching the fold edge of the fabric with the side of the paper marked "folded edge".
4. Cut around the perimeter of each piece.
5. Laying the pieces in fabric, you will need to slip each of the notches, taking care not to cut into beyond the end of the 1" strip.



NOTE A: FABRIC LESS THAN 54" WIDE
If your fabric is less than 54" wide, you will need to print and assemble the pattern pieces on multiple sheets of paper. The pieces are marked with a "folded edge" and a "self-finished edge". The pieces are marked with a "folded edge" and a "self-finished edge". The pieces are marked with a "folded edge" and a "self-finished edge".

NOTE B: FABRIC WITH NAP OR DIRECTIONAL PATTERN
For fabric with a nap, such as velvet or corduroy, fabric with a directional pattern, or for washing stripes, such as a plaid, you will need to cut the pattern pieces following the nap or the direction of the fabric. The pieces are marked with a "folded edge" and a "self-finished edge".

NOTE C: USING FUSIBLE INTERFACING
Fusible interfacing is intended for use on collars, necklines, and other areas where you want to add structure and support. When using fusible interfacing, be sure to follow the manufacturer's instructions for use. The pieces are marked with a "folded edge" and a "self-finished edge".



Before cutting your fabric measure this square to make sure that the pattern is scaled correctly*
*Scale printed and square will automatically scale large each image which will affect the fit.

The inner square should measure 4" x 4"

The outer square should measure 12cm x 12cm