



**JUMPSUIT CUTTING INSTRUCTIONS**  
DOCUMENT: 855 JUMPSUIT CUTTING INSTRUCTIONS V1.0  
www.jumpsuits.com

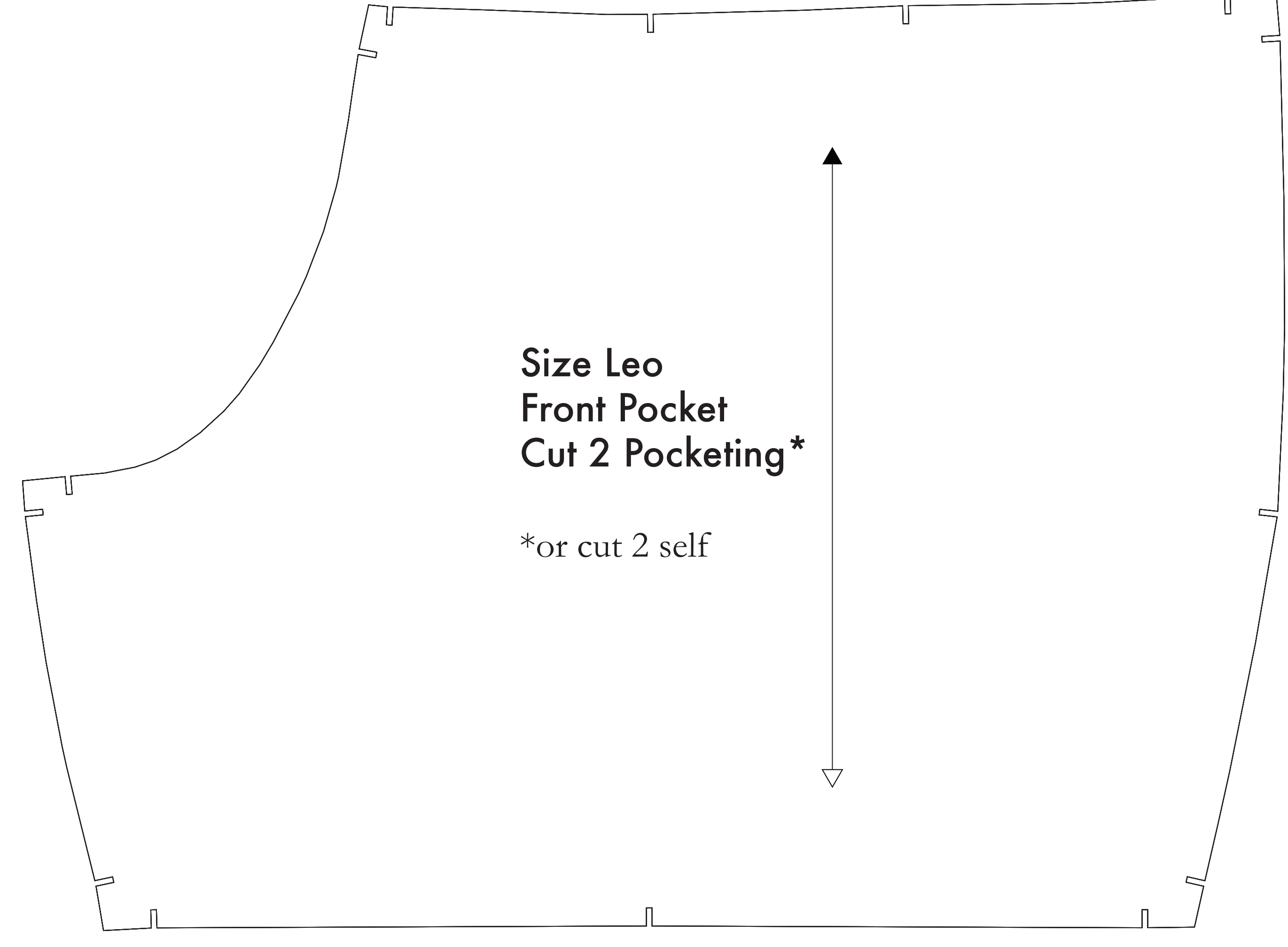
- SUPPLIES NEEDED**
- 3 1/4 YARDS OF 54" WIDE FABRIC
  - SHARP SCISSORS
  - REMOVABLE MARKING MEDIUM (chalk, wax, tailor's tuck, etc.)
  - 1" 24" NON-SEPARATING ZIPPER
  - THREAD
  - SEWING MACHINE
- optional:
- 1/2 YARD OF THINNER POCKET FABRIC
  - FUSIBLE INTERFACING

- CUTTING INSTRUCTIONS**
1. Print pattern. You can print this document that on sheets of standard size paper and tape the pieces together, or print on a wide-format printer (8 1/2" or wider). These sheets offer the service for approximately 1/12. If available to you, the REO recommends wide-format printing.
  2. Once your pattern is printed, cut along the continuous orange line to remove the excess paper. This template should fit easily on a 54" wide or larger piece of fabric that has been folded in half. If your fabric is less than 54" wide, see **NOTE A**. For maximum yield, this pattern is laid out the fabric that does not have a direction. For fabric with a nap, such as velvet or corduroy or fabric with a clear directional grain use **NOTE B**.
  3. Fold your fabric in half along the light-grey grain matching selvage edge to selvage edge, selvage to the self-finished edge of fabric. This narrow band keeps the fabric from unraveling or fraying. Often it has an edge that resembles the fringe, though not as frequently, a clearly finished line will be found. Iron this edge in your cut piece as the pattern frequently differs from the main body of the fabric.
  4. Place the paper template on top of your fabric, matching the folded edge of the fabric with the side of the paper marked "folded edge".
  5. Place pins throughout the template pinning together both layers of fabric as well as the paper.
  6. Cut around the perimeter of each piece.
  7. Leaving the pins in place, you will need to strip each of the notches, taking care to not strip beyond the end of the 1/4" strip.

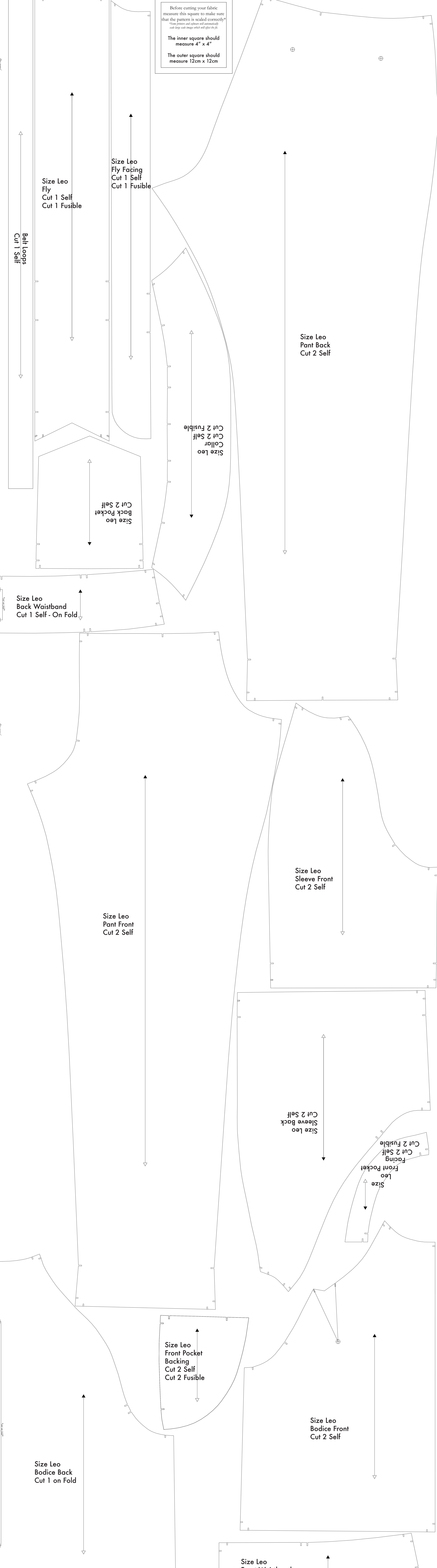
**NOTE A: FABRIC LESS THAN 54" WIDE**  
If your fabric is less than 54" wide you will need to use pattern pieces individually from the paper template and piece them together as you cut. This document provides the instructions on how to do this in detail below. The pattern instructions and pieces are all marked in each pattern piece for ease of use. To find the pieces, look for the single line with two arrows at either end. These two arrows indicate the direction of the piece. When you have cut out your piece, these two arrows should point to the selvage edge of your fabric. To ensure that the pieces are laid out as shown from the top view, please pin to the edge of the fabric that is up the entire fabric with the narrow seam. When the top and bottom pieces are laid out, they should be the same fabric from the pattern piece as shown previously.

**NOTE B: FABRIC WITH NAP OR DIRECTIONAL PATTERN**  
Directions with a nap or directional pattern, fabric with a clear directional grain, or for matching stripes, check the direction of the grain on the pattern piece. The arrows at the end of the piece indicate the direction of the grain. To ensure that the pieces are laid out as shown from the top view, please pin to the edge of the fabric that is up the entire fabric with the narrow seam. When the top and bottom pieces are laid out, they should be the same fabric from the pattern piece as shown previously.

**NOTE C: USING FUSIBLE INTERFACING**  
Fusible interfacing is a material that is used to reinforce, strengthen, and stabilize construction in garments. Before using fusible interfacing, please refer to the manufacturer's instructions for use. Please refer to the manufacturer's instructions for use of the product.



**Size Leo Front Pocket Cut 2 Pocketing\***  
\*or cut 2 self



Before cutting your fabric measure this square to make sure that the pattern is scaled correctly\*  
\*Some printers and software will automatically scale large scale images which will affect the fit.  
The inner square should measure 4" x 4"  
The outer square should measure 12cm x 12cm

**Size Leo Fly Cut 1 Self Cut 1 Fusible**

**Size Leo Fly Facing Cut 1 Self Cut 1 Fusible**

**Belt Loops Cut 1 Self**

**Size Leo Collar Cut 2 Fusible**

**Size Leo Pant Back Cut 2 Self**

**Size Leo Back Pocket Cut 2 Self**

**Size Leo Back Waistband Cut 1 Self - On Fold**

**Size Leo Sleeve Front Cut 2 Self**

**Size Leo Pant Front Cut 2 Self**

**Size Leo Sleeve Back Cut 2 Self**

**Size Leo Facing Front Pocket Cut 2 Fusible**

**Size Leo Front Pocket Back Cut 2 Self Cut 2 Fusible**

**Size Leo Bodice Front Cut 2 Self**

**Size Leo Bodice Back Cut 1 on Fold**

**Size Leo Front Waistband Cut 2 Self**