


- SUPPLIES NEEDED**
- 2 YARDS OF 54" WIDE FABRIC
 - SHARP SCISSORS
 - REMOVABLE MARKING MEDIUM (chalk, wax, tailor's stick, etc.)
 - 1 - 24" NON-SEPARATING ZIPPER
 - SEWING MACHINE
 - FUSIBLE INTERFACING

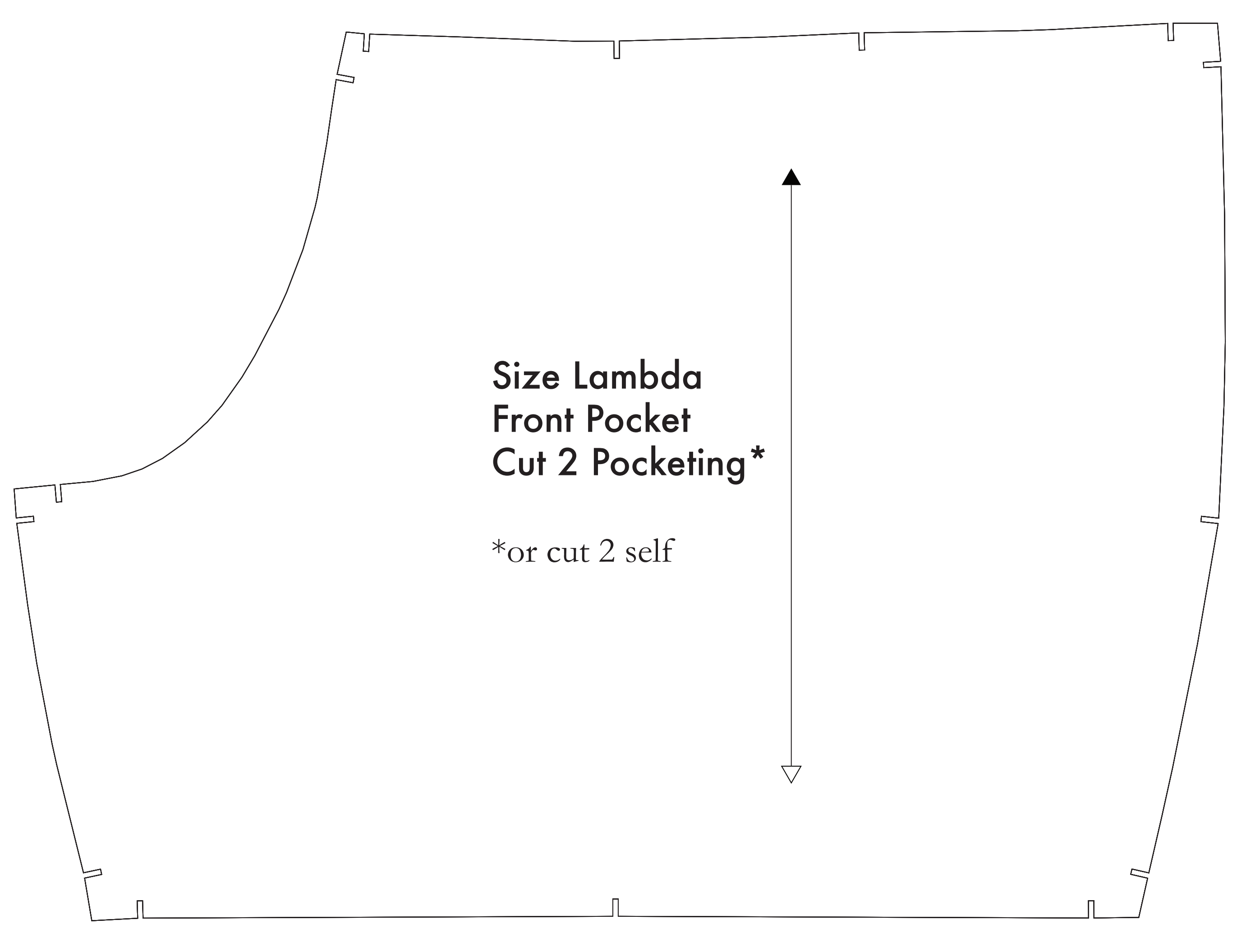
CUTTING INSTRUCTIONS

1. Trace pattern. You can print this document (and all sheets of standard size paper) and tape the pieces together, or print on a wide format printer (36" or wider). Print sheets (for this service for approximately \$12. If available to you, the B&B environment is wide format printing.
2. Once your pattern is printed, cut along the outermost rectangle to remove any excess paper. This template should fit exactly on a 36" wide or larger piece of fabric that has been folded in half. If your fabric is less than 36" wide, see **NOTE A**. For instructions on how to cut for fabric that does not have a direction, see fabric with a directional grain.
3. Fold your fabric in half along the lengthwise grain matching shoulder edge to center edge. Schedule in the self-finished edge of fabric. This narrow band keeps the fabric from unraveling or fraying. When it has an edge that resembles one fringe, though not as frequently, a ready finished line will be found. Avoid the edge as you cut pieces as the texture frequently differs from the main body of the fabric.
4. Place the paper template on top of your fabric, matching the folded edge of the fabric with the side of the paper marked "Folded edge".
5. Trace your template on your fabric, passing together both layers of fabric as well as the paper.
6. Cut around the perimeter of each piece.
7. Laying the piece in place, you will most need to snap each of the notches, taking care to not snap beyond the end of the U-shape!
 - Notches are 1/4" deep markings that are used throughout the pattern.
 - Some notches indicate seam allowances, which others will help you line up pattern pieces when sewing.
8. Mark all interior drill holes. Using a pin, bring together both layers of fabric, and the pattern, mark the center of each drill hole with chalk, wax, or other removable, non-permanent tool. A tailor's tack may also be used. This interior drill hole, or marking, are indicated by the following symbol:  They will be located on the Front Back, Back Back, and Front Front pieces. **NOTE C** for more info.
9. (OPTIONAL) Cut fusible interfacing pieces (see **NOTE C** for more info). Pattern pieces that use fusible will be marked with the direction "Cut 2 Fusible" or "Cut 1 Fusible". These pieces are the Collar, Fly, Fly Facing, Front Pocket Facing, and Front Pocket Backing. To cut the fusible, lay the material down with the glue side facing up, then place your pattern down and cut around the perimeter of each piece and notch.
10. Cut the Front Pocket Bag out of a lighter pecking material. If you are not using a pecking material, then the Front Pocket Bag may be cut alongside your other pattern pieces. Pecking is used to make mark or ease of fabric material - You will find an example of pecking on any pair of blue jeans.

NOTE A: FABRIC LESS THAN 36" WIDE
If your fabric is less than 36" wide, you will need to cut each pattern piece individually from the piece supplied and then a piece in your fabric taking care to position the pattern piece so that there is no overlap. The quantity measurement and pattern are all marked on the pattern piece for ease of use. To find the marking, measure the fabric from the center of the grain to the edge and then mark the distance on your fabric. When marking, be sure to mark the distance from the center of the grain to the edge of your fabric. To ensure that the cut pattern pieces are square, draw from the center point to the edge of the fabric, then mark the distance with the measuring tape. When the distance is marked, cut the pattern pieces to ensure perfect fit.

NOTE B: FABRIC WITH NAIP OR DIRECTIONAL PATTERN
For fabric with a directional pattern or a directional grain, such as a plaid, you will need to cut the pattern pieces individually from the fabric, ensuring that the width of the fabric is used on each pattern piece in the same direction.

NOTE C: USING FUSIBLE INTERFACING
Fusible interfacing is a material that is used to stabilize, strengthen, and stabilize other pieces in a garment. While the use of fusible interfacing is optional, the Removable-Seamless Interfacing is a light no-starch weight non-woven or non-fabric interfacing in the construction of JUMPSUIT.



Before cutting your fabric measure this square to make sure that the pattern is scaled correctly*
*Some printers and software will automatically scale large size images which will affect the fit.
The inner square should measure 4" x 4"
The outer square should measure 12cm x 12cm

