



- SUPPLIES NEEDED**
- 2 1/4 YARDS OF 54" WIDE FABRIC
  - SHARP SCISSORS
  - REMOVABLE MARKING MEDIUM (chalk, wax, holler's tack, etc.)
  - 1 - 24" NON-SEPARATING ZIPPER
  - THREAD
  - SEWING MACHINE (optional)
  - 1/2 YARD OF THINNER POCKET FABRIC
  - FUSIBLE INTERFACING

**CUTTING INSTRUCTIONS**

- Print pattern. You can print this document (that on sheets of standard size paper and tape the pieces together, or print on a wide-format printer (36" or wider). Print sheets offer the service for approximately \$12. If available to you, the REDS recommends wide-format printing.
- Once your pattern is printed, cut along the outermost rectangle to remove any excess paper. This template should be exactly one yard wide or longer piece of fabric that has been folded in half. If your fabric is less than 54" wide, use **NOTE A**. For maximum yield this pattern is laid out for fabric that does not have a direction. For fabric with a grain, such as velvet or corduroy or fabric with a clear directional print, use **NOTE B**.
- Fold your fabric in half along the lengthwise grain matching selvage edge to selvage edge. Selvedge in the self-finished edge of fabric. This narrow border keeps the fabric from stretching or fraying. Once it has an edge that remains very frayed, through not an frequently, a clearly finished line will be found. Avoid this edge in your cut pieces as the texture frequently differs from the main body of the fabric.
- Place the paper template on top your fabric, matching the folded edge of the fabric with the side of the paper marked "folded edge".
- Place pins throughout the template pinning together both layers of fabric as well as the paper.
- Cut around the perimeter of each piece.
- Leaving the pins in place, you will need need to step each of the notches, taking care to not step beyond the end of the "folded edge".

**NOTE A: FABRIC LESS THAN 54" WIDE**  
If your fabric is less than 54" wide, the instructions are with pattern pieces laid out. From the paper template, cut fabric 1/2 yard or longer using care to pin together the pattern pieces so they face in correct ways. The quantity mentioned and provided in all material is for 54" wide fabric. If you have fabric that is shorter than 54" wide, you will need to determine what you can do with the fabric. When cutting a top or over fabric, there's little that can be done for the selvage edge of your fabric. To ensure that this can provide means the distance from top edge piece to the edge of the fabric, this match that you direct with the bottom piece. When the top edge piece is an equivalent piece the right or left side that the pattern piece is correctly positioned!

**NOTE B: FABRIC WITH NAP OR DIRECTIONAL PATTERN**  
For items with a nap such as velvet or corduroy, fabric with a clear directional print, or for matching pieces, such as a top or over fabric, there's little that can be done for the selvage edge of your fabric. To ensure that this can provide means the distance from top edge piece to the edge of the fabric, this match that you direct with the bottom piece. When the top edge piece is an equivalent piece the right or left side that the pattern piece is correctly positioned!

**NOTE C: USING FUSIBLE INTERFACING**  
Fusible interfacing is optional for most pieces in a jumpsuit. While the use of fusible interfacing is optional, the material does become necessary in a light to medium weight case or over or more fabric depending on the construction of JUMPSUIT.

**NOTE D: COLLAR PATCH**  
The items with a collar such as the collar, fly, front pocket, back pocket, and front waistband, they will be cut with a collar patch. The collar patch is a separate piece of fabric that is used to reinforce the collar area. It is cut with the same dimensions as the collar piece.

**NOTE E: COLLAR PATCH**  
The items with a collar such as the collar, fly, front pocket, back pocket, and front waistband, they will be cut with a collar patch. The collar patch is a separate piece of fabric that is used to reinforce the collar area. It is cut with the same dimensions as the collar piece.

**NOTE F: COLLAR PATCH**  
The items with a collar such as the collar, fly, front pocket, back pocket, and front waistband, they will be cut with a collar patch. The collar patch is a separate piece of fabric that is used to reinforce the collar area. It is cut with the same dimensions as the collar piece.

**NOTE G: COLLAR PATCH**  
The items with a collar such as the collar, fly, front pocket, back pocket, and front waistband, they will be cut with a collar patch. The collar patch is a separate piece of fabric that is used to reinforce the collar area. It is cut with the same dimensions as the collar piece.

**NOTE H: COLLAR PATCH**  
The items with a collar such as the collar, fly, front pocket, back pocket, and front waistband, they will be cut with a collar patch. The collar patch is a separate piece of fabric that is used to reinforce the collar area. It is cut with the same dimensions as the collar piece.

**NOTE I: COLLAR PATCH**  
The items with a collar such as the collar, fly, front pocket, back pocket, and front waistband, they will be cut with a collar patch. The collar patch is a separate piece of fabric that is used to reinforce the collar area. It is cut with the same dimensions as the collar piece.

**NOTE J: COLLAR PATCH**  
The items with a collar such as the collar, fly, front pocket, back pocket, and front waistband, they will be cut with a collar patch. The collar patch is a separate piece of fabric that is used to reinforce the collar area. It is cut with the same dimensions as the collar piece.

**NOTE K: COLLAR PATCH**  
The items with a collar such as the collar, fly, front pocket, back pocket, and front waistband, they will be cut with a collar patch. The collar patch is a separate piece of fabric that is used to reinforce the collar area. It is cut with the same dimensions as the collar piece.

**NOTE L: COLLAR PATCH**  
The items with a collar such as the collar, fly, front pocket, back pocket, and front waistband, they will be cut with a collar patch. The collar patch is a separate piece of fabric that is used to reinforce the collar area. It is cut with the same dimensions as the collar piece.

**NOTE M: COLLAR PATCH**  
The items with a collar such as the collar, fly, front pocket, back pocket, and front waistband, they will be cut with a collar patch. The collar patch is a separate piece of fabric that is used to reinforce the collar area. It is cut with the same dimensions as the collar piece.

**NOTE N: COLLAR PATCH**  
The items with a collar such as the collar, fly, front pocket, back pocket, and front waistband, they will be cut with a collar patch. The collar patch is a separate piece of fabric that is used to reinforce the collar area. It is cut with the same dimensions as the collar piece.

**NOTE O: COLLAR PATCH**  
The items with a collar such as the collar, fly, front pocket, back pocket, and front waistband, they will be cut with a collar patch. The collar patch is a separate piece of fabric that is used to reinforce the collar area. It is cut with the same dimensions as the collar piece.

**NOTE P: COLLAR PATCH**  
The items with a collar such as the collar, fly, front pocket, back pocket, and front waistband, they will be cut with a collar patch. The collar patch is a separate piece of fabric that is used to reinforce the collar area. It is cut with the same dimensions as the collar piece.

**NOTE Q: COLLAR PATCH**  
The items with a collar such as the collar, fly, front pocket, back pocket, and front waistband, they will be cut with a collar patch. The collar patch is a separate piece of fabric that is used to reinforce the collar area. It is cut with the same dimensions as the collar piece.

**NOTE R: COLLAR PATCH**  
The items with a collar such as the collar, fly, front pocket, back pocket, and front waistband, they will be cut with a collar patch. The collar patch is a separate piece of fabric that is used to reinforce the collar area. It is cut with the same dimensions as the collar piece.

**NOTE S: COLLAR PATCH**  
The items with a collar such as the collar, fly, front pocket, back pocket, and front waistband, they will be cut with a collar patch. The collar patch is a separate piece of fabric that is used to reinforce the collar area. It is cut with the same dimensions as the collar piece.

**NOTE T: COLLAR PATCH**  
The items with a collar such as the collar, fly, front pocket, back pocket, and front waistband, they will be cut with a collar patch. The collar patch is a separate piece of fabric that is used to reinforce the collar area. It is cut with the same dimensions as the collar piece.

**NOTE U: COLLAR PATCH**  
The items with a collar such as the collar, fly, front pocket, back pocket, and front waistband, they will be cut with a collar patch. The collar patch is a separate piece of fabric that is used to reinforce the collar area. It is cut with the same dimensions as the collar piece.

**NOTE V: COLLAR PATCH**  
The items with a collar such as the collar, fly, front pocket, back pocket, and front waistband, they will be cut with a collar patch. The collar patch is a separate piece of fabric that is used to reinforce the collar area. It is cut with the same dimensions as the collar piece.

**NOTE W: COLLAR PATCH**  
The items with a collar such as the collar, fly, front pocket, back pocket, and front waistband, they will be cut with a collar patch. The collar patch is a separate piece of fabric that is used to reinforce the collar area. It is cut with the same dimensions as the collar piece.

**NOTE X: COLLAR PATCH**  
The items with a collar such as the collar, fly, front pocket, back pocket, and front waistband, they will be cut with a collar patch. The collar patch is a separate piece of fabric that is used to reinforce the collar area. It is cut with the same dimensions as the collar piece.

**NOTE Y: COLLAR PATCH**  
The items with a collar such as the collar, fly, front pocket, back pocket, and front waistband, they will be cut with a collar patch. The collar patch is a separate piece of fabric that is used to reinforce the collar area. It is cut with the same dimensions as the collar piece.

**NOTE Z: COLLAR PATCH**  
The items with a collar such as the collar, fly, front pocket, back pocket, and front waistband, they will be cut with a collar patch. The collar patch is a separate piece of fabric that is used to reinforce the collar area. It is cut with the same dimensions as the collar piece.

**NOTE AA: COLLAR PATCH**  
The items with a collar such as the collar, fly, front pocket, back pocket, and front waistband, they will be cut with a collar patch. The collar patch is a separate piece of fabric that is used to reinforce the collar area. It is cut with the same dimensions as the collar piece.

**NOTE AB: COLLAR PATCH**  
The items with a collar such as the collar, fly, front pocket, back pocket, and front waistband, they will be cut with a collar patch. The collar patch is a separate piece of fabric that is used to reinforce the collar area. It is cut with the same dimensions as the collar piece.

**NOTE AC: COLLAR PATCH**  
The items with a collar such as the collar, fly, front pocket, back pocket, and front waistband, they will be cut with a collar patch. The collar patch is a separate piece of fabric that is used to reinforce the collar area. It is cut with the same dimensions as the collar piece.

**NOTE AD: COLLAR PATCH**  
The items with a collar such as the collar, fly, front pocket, back pocket, and front waistband, they will be cut with a collar patch. The collar patch is a separate piece of fabric that is used to reinforce the collar area. It is cut with the same dimensions as the collar piece.

**NOTE AE: COLLAR PATCH**  
The items with a collar such as the collar, fly, front pocket, back pocket, and front waistband, they will be cut with a collar patch. The collar patch is a separate piece of fabric that is used to reinforce the collar area. It is cut with the same dimensions as the collar piece.

**NOTE AF: COLLAR PATCH**  
The items with a collar such as the collar, fly, front pocket, back pocket, and front waistband, they will be cut with a collar patch. The collar patch is a separate piece of fabric that is used to reinforce the collar area. It is cut with the same dimensions as the collar piece.

**NOTE AG: COLLAR PATCH**  
The items with a collar such as the collar, fly, front pocket, back pocket, and front waistband, they will be cut with a collar patch. The collar patch is a separate piece of fabric that is used to reinforce the collar area. It is cut with the same dimensions as the collar piece.

**NOTE AH: COLLAR PATCH**  
The items with a collar such as the collar, fly, front pocket, back pocket, and front waistband, they will be cut with a collar patch. The collar patch is a separate piece of fabric that is used to reinforce the collar area. It is cut with the same dimensions as the collar piece.

**NOTE AI: COLLAR PATCH**  
The items with a collar such as the collar, fly, front pocket, back pocket, and front waistband, they will be cut with a collar patch. The collar patch is a separate piece of fabric that is used to reinforce the collar area. It is cut with the same dimensions as the collar piece.

**NOTE AJ: COLLAR PATCH**  
The items with a collar such as the collar, fly, front pocket, back pocket, and front waistband, they will be cut with a collar patch. The collar patch is a separate piece of fabric that is used to reinforce the collar area. It is cut with the same dimensions as the collar piece.

**NOTE AK: COLLAR PATCH**  
The items with a collar such as the collar, fly, front pocket, back pocket, and front waistband, they will be cut with a collar patch. The collar patch is a separate piece of fabric that is used to reinforce the collar area. It is cut with the same dimensions as the collar piece.

**NOTE AL: COLLAR PATCH**  
The items with a collar such as the collar, fly, front pocket, back pocket, and front waistband, they will be cut with a collar patch. The collar patch is a separate piece of fabric that is used to reinforce the collar area. It is cut with the same dimensions as the collar piece.

**NOTE AM: COLLAR PATCH**  
The items with a collar such as the collar, fly, front pocket, back pocket, and front waistband, they will be cut with a collar patch. The collar patch is a separate piece of fabric that is used to reinforce the collar area. It is cut with the same dimensions as the collar piece.

**NOTE AN: COLLAR PATCH**  
The items with a collar such as the collar, fly, front pocket, back pocket, and front waistband, they will be cut with a collar patch. The collar patch is a separate piece of fabric that is used to reinforce the collar area. It is cut with the same dimensions as the collar piece.

**NOTE AO: COLLAR PATCH**  
The items with a collar such as the collar, fly, front pocket, back pocket, and front waistband, they will be cut with a collar patch. The collar patch is a separate piece of fabric that is used to reinforce the collar area. It is cut with the same dimensions as the collar piece.

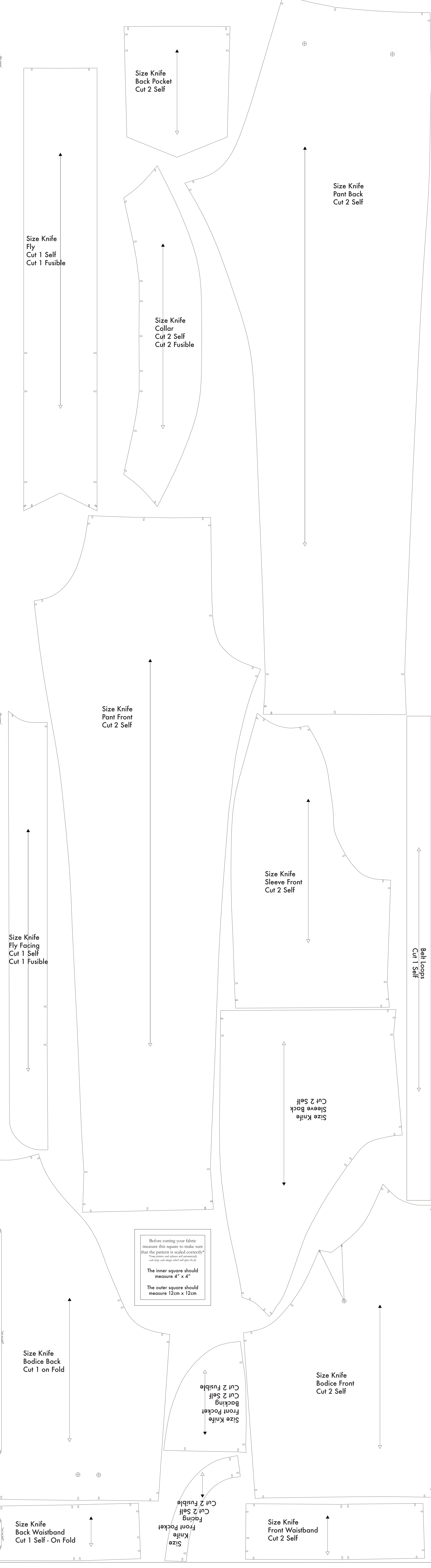
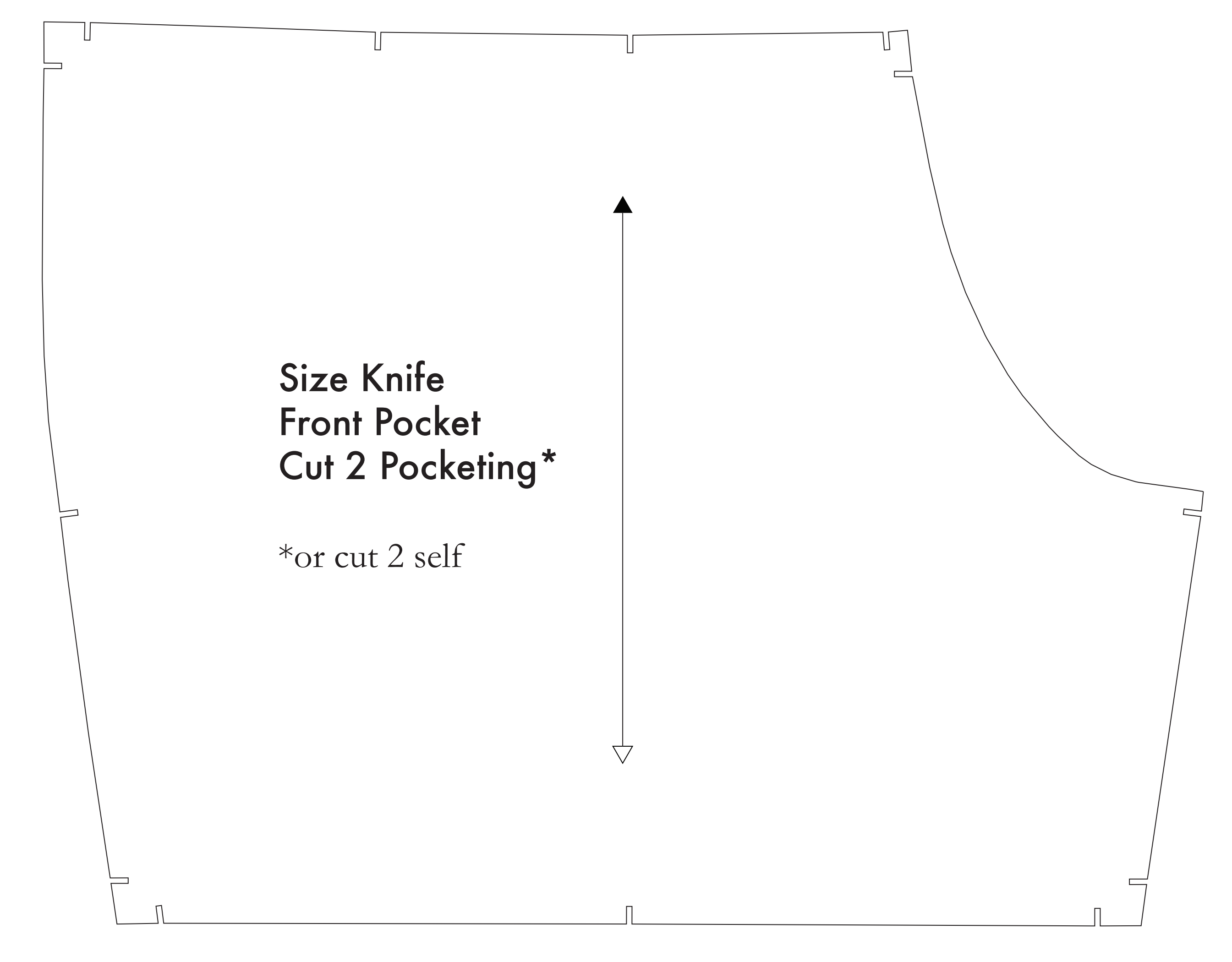
**NOTE AP: COLLAR PATCH**  
The items with a collar such as the collar, fly, front pocket, back pocket, and front waistband, they will be cut with a collar patch. The collar patch is a separate piece of fabric that is used to reinforce the collar area. It is cut with the same dimensions as the collar piece.

**NOTE AQ: COLLAR PATCH**  
The items with a collar such as the collar, fly, front pocket, back pocket, and front waistband, they will be cut with a collar patch. The collar patch is a separate piece of fabric that is used to reinforce the collar area. It is cut with the same dimensions as the collar piece.

**NOTE AR: COLLAR PATCH**  
The items with a collar such as the collar, fly, front pocket, back pocket, and front waistband, they will be cut with a collar patch. The collar patch is a separate piece of fabric that is used to reinforce the collar area. It is cut with the same dimensions as the collar piece.

**NOTE AS: COLLAR PATCH**  
The items with a collar such as the collar, fly, front pocket, back pocket, and front waistband, they will be cut with a collar patch. The collar patch is a separate piece of fabric that is used to reinforce the collar area. It is cut with the same dimensions as the collar piece.

**NOTE AT: COLLAR PATCH**  
The items with a collar such as the collar, fly, front pocket, back pocket, and front waistband, they will be cut with a collar patch. The collar patch is a separate piece of fabric that is used to reinforce the collar area. It is cut with the same dimensions as the collar piece.



Before cutting your fabric measure this square to make sure that the pattern is scaled correctly\*  
\*Some printers and software will automatically scale large and small images which will affect the fit.  
The inner square should measure 4" x 4"  
The outer square should measure 12cm x 12cm