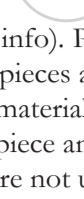


- SUPPLIES NEEDED**
- 2 YARDS OF 54" WIDE FABRIC
 - SHARP SCISSORS
 - REMOVABLE MARKING MEDIUM (chalk, wax, tailor's tuck, etc.)
 - 1/2" NON-SEPARATING ZIPPER
 - THREAD
 - SEWING MACHINE (optional)
 - 1/2 YARD OF THINNER POCKET FABRIC (optional)
 - FUSIBLE INTERFACING

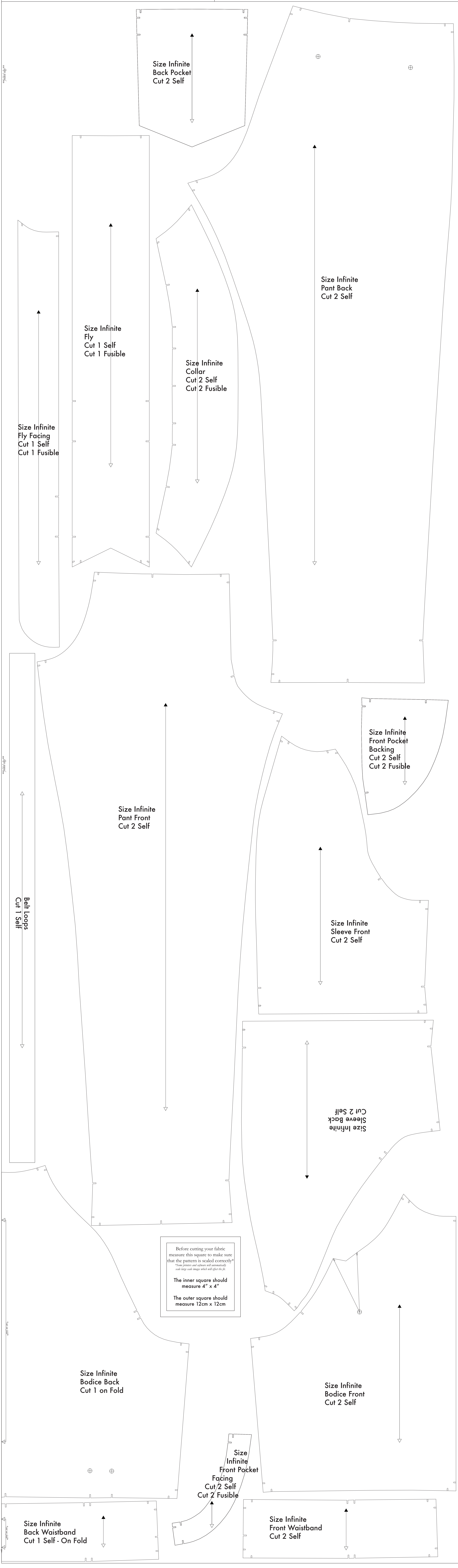
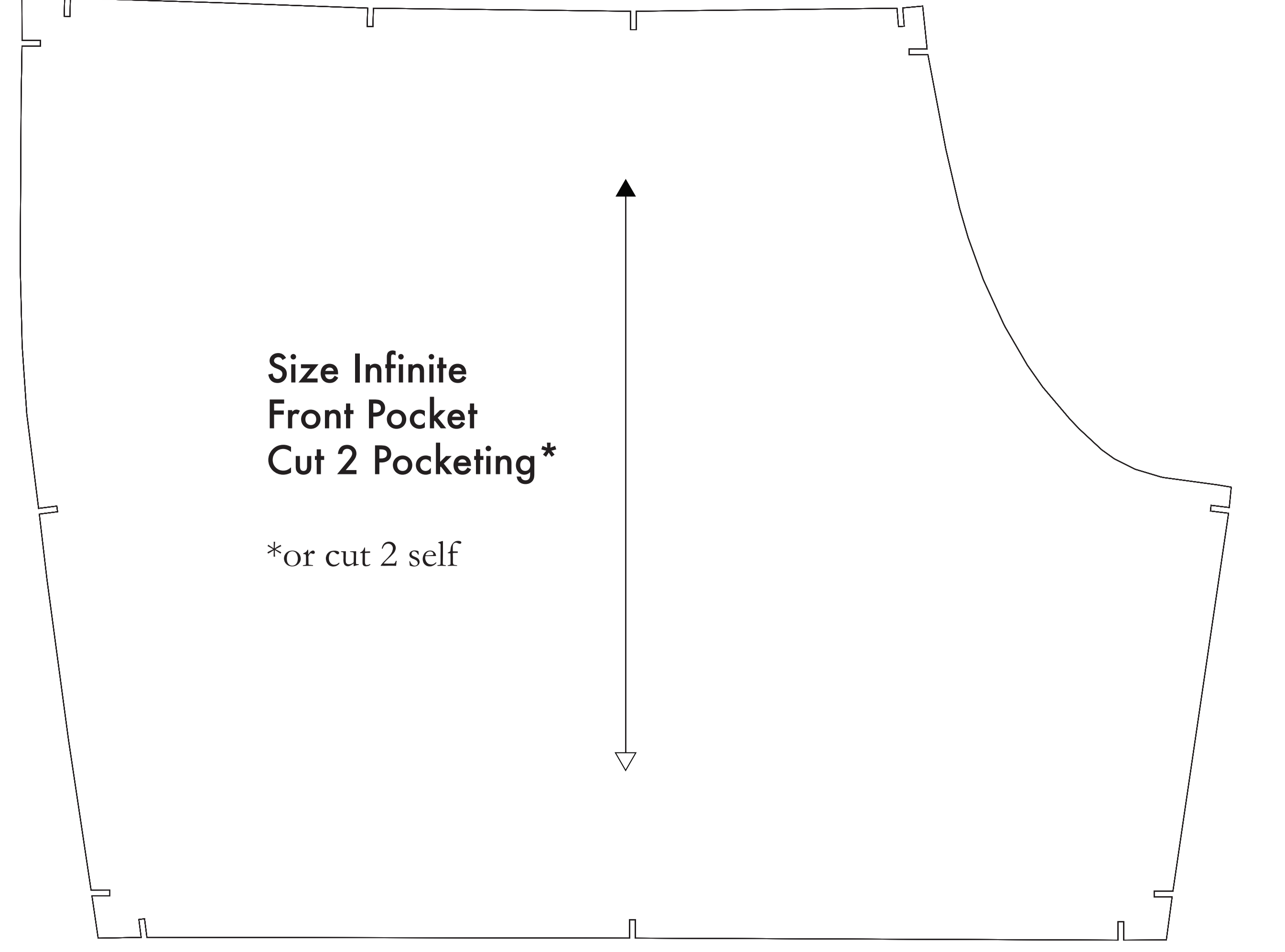
CUTTING INSTRUCTIONS

1. Print pattern. You can print this document tiled on sheets of standard size paper and tape the pieces together, or print on a wide format printer (36" or wider). Print shops offer this service for approximately \$12. If available to you, the RDS recommends wide format printing.
2. Once your pattern is printed, cut along the outermost rectangle to remove any excess paper. This template should fit exactly on a 54" wide or larger piece of fabric that has been folded in half. If your fabric is less than 54" wide, use **NOTE A**. For maximum yield this pattern is laid out for fabric that does not have a direction. For fabric with a nap, such as velvet or corduroy or fabric with a clear directional print, see **NOTE B**.
3. Fold your fabric in half along the lengthwise grain matching selvedge edge to selvedge edge. Selvedge is the self finished edge of fabric. This feature helps keep the fabric from stretching or fraying. When it has an edge that resembles any fringe, though just as frequently, a clearly finished line will be found. Avoid this edge in your cut pieces as the texture frequently differs from the main body of the fabric.
4. Trace the paper template on top your fabric, matching the folded edge of the fabric with the side of the paper marked "folded edge".
5. Trace your design over the template pinning together both layers of fabric as well as the paper.
6. Cut around the perimeter of each piece.
7. Leaving the pins in place, you will need to snip each of the notches, taking care to not snip beyond the end of the U shape!
Notches are the U shaped markings that are found throughout the pattern. Some notches indicate seam allowances visible, while others will help you line up pattern pieces while sewing.
8. Mark all interior drill holes. Using a pin, bring together both layers of fabric and the pattern, mark the center of each drill hole with chalk, wax or other removable, nonpermanent mark. A tailor's tuck may also be used.
This marker drill holes, or markings, are indicated by the following symbol: 
9. **OPTIONAL:** Cut fusible interfacing pieces per **NOTE C** for more detail. Pattern pieces that are fusible will be marked with the direction "Cut 2 Fusible" or "Cut 1 Fusible". These pieces are the Collar, Fly, Fly Facing, Front Pocket Facing, and Front Pocket Backing. To cut the fusible, lay the material down with the glue side facing up, then place your pattern down and cut around the perimeter of each piece and notch.
10. Cut the Front Pocket Bag out of a lighter packing material. If you are not using a packing material, then the Front Pocket Bag may be cut directly from other pattern pieces. *Packing is used to make both in case of fabric materials - You will find an example of packing on every pair of fabric pieces.*

NOTE A: FABRIC LESS THAN 54" WIDE
If your fabric is less than 54" wide you will need to cut each pattern piece individually from the paper template and piece it back onto fabric using your preferred method. To ensure that the pieces are cut correctly, use the dimensions and grain lines on the pattern pieces for reference. To aid the graining, marking half for one leg for each piece or other end. These two indicate the direction, or grain, of the fabric. When marking, leave an extra fabric line between the grain line and the selvedge edge of your fabric. To ensure that the grain is parallel to the edge of the fabric, draw a line that runs down the length of the fabric. When the line and fabric are even or equivalent from the edge of your fabric, then the pattern piece is correctly positioned.

NOTE B: FABRIC WITH NAP OR DIRECTIONAL PATTERN
For fabric with a nap such as velvet or corduroy, fabric with a clear directional print, or a directional pattern such as a plaid, you will need to cut the pattern pieces individually from the paper template, ensuring that the notch lines are found on each pattern piece in the same direction.

NOTE C: USING FUSIBLE INTERFACING
Fusible interfacing is a material used to add to a pattern, strengthen, and stabilize certain pieces in a garment. While the use of fusible interfacing is optional, the RDS does not recommend a light to medium weight fusible interfacing for the fabric marking in the construction of JUMPSUIT.



Before cutting your fabric measure this square to make sure that the pattern is scaled correctly*
*Some printers and software will automatically scale large scale images which will affect the fit.
The inner square should measure 4" x 4"
The outer square should measure 12cm x 12cm