

- SUPPLIES NEEDED**
- 2 YARDS OF 54" WIDE FABRIC
 - SHARP SCISSORS
 - REMOVABLE MARKING MEDIUM (chalk, wax, tailor's tuck, etc.)
 - 1 - 24" NON-SEPARATING ZIPPER
 - THREAD
 - SEWING MACHINE
- OPTIONAL:**
- 1/2 YARD OF THINNER POCKET FABRIC
 - FUSIBLE INTERFACING

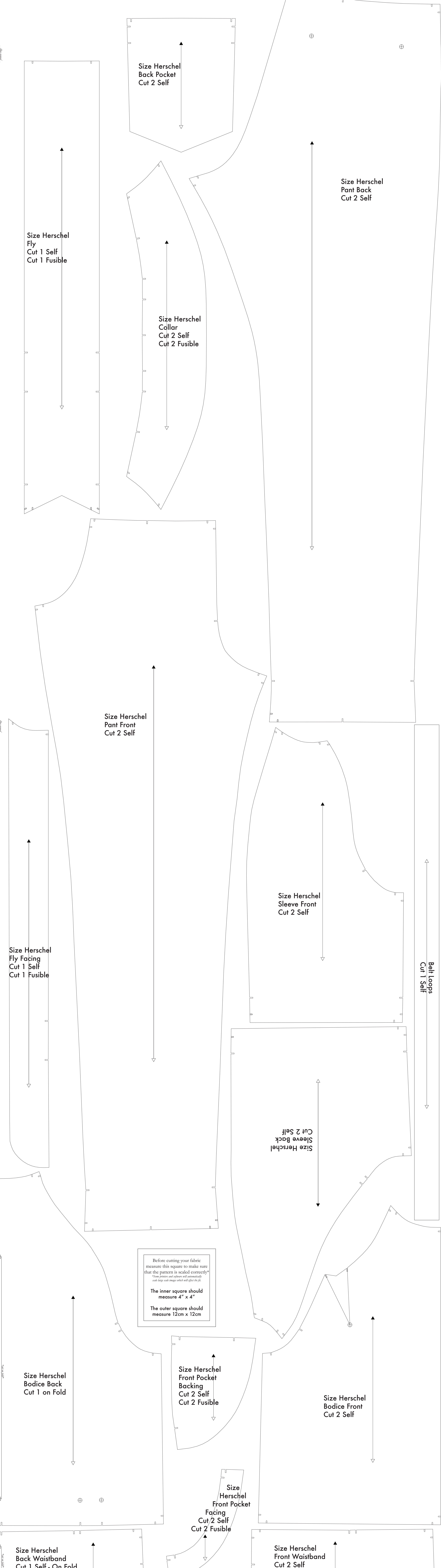
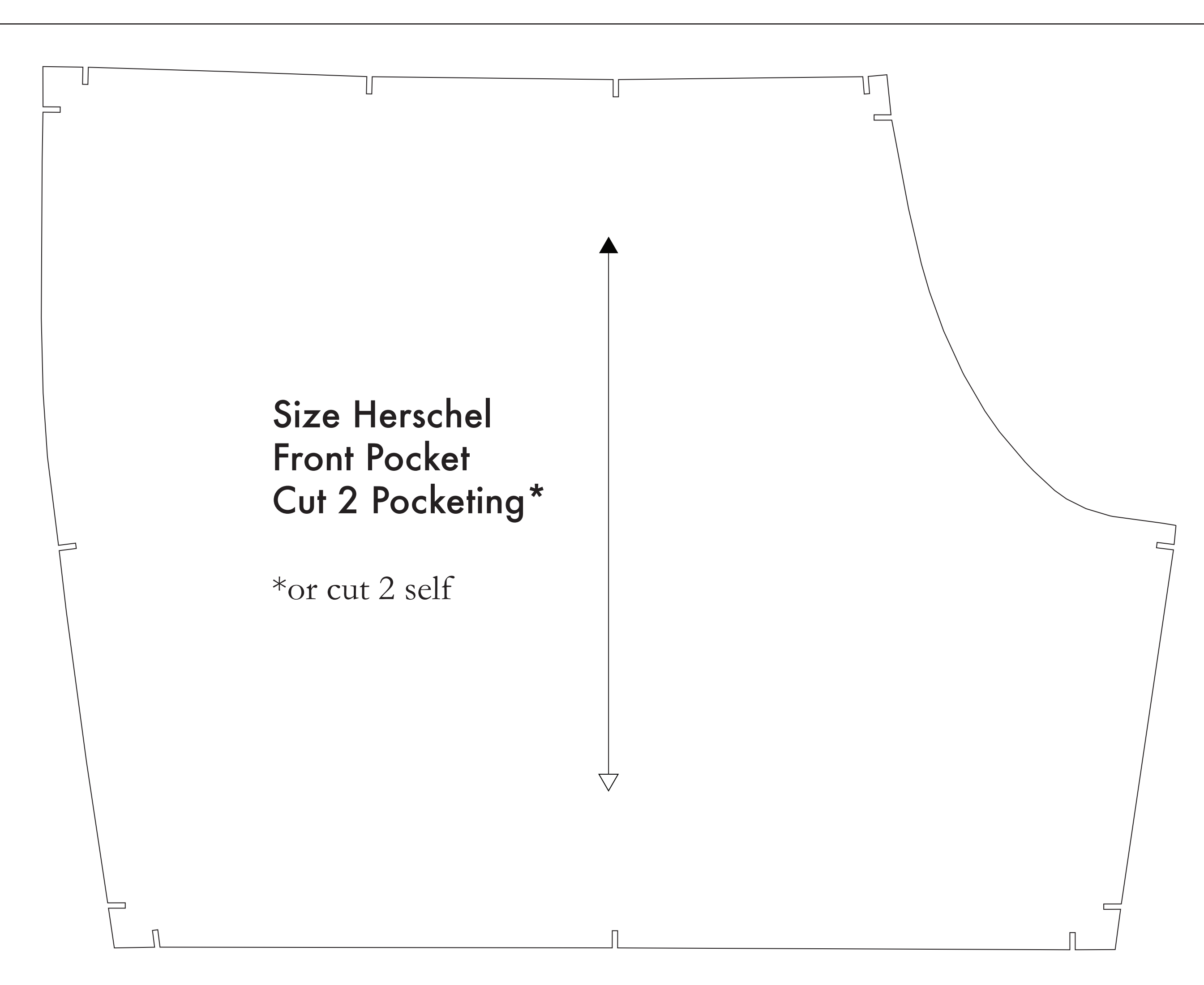
CUTTING INSTRUCTIONS

- Print pattern. You can print this document (ideal on sheets of standard size paper and tape the pieces together, or print on a wide-format printer 36" or wider). Print sheets offer the services for approximately \$12. If available to you, the BFD recommends wide-format printing.
- Trace your pattern to printed, cut along the outermost rectangle to remove any excess paper. This template should be exactly one 1/2 yard wide or longer piece of fabric that has been folded in half. If your fabric is less than 54" wide use **NOTE A**. For maximum risk the pattern is laid out for fabric that does not have a direction. For fabric with a grain, such as velvet or corduroy or fabric with a clear directional print use **NOTE B**.
- Hold your fabric in half along the longwise grain matching selvage edge to selvage edge. Stretch in the self-finished edge of fabric. This narrow border keeps the fabric from warping or fraying. There is an edge that resembles iron fraying, though not as frequently, a clearly finished line will be found. Avoid this edge as your cut pieces as the texture frequently differs from the main body of the fabric.
- Place the paper template on top your fabric, matching the folded edge of the fabric with the side of the paper marked "folded edge".
- Place pins throughout the template pinning together both layers of fabric as well as the paper.
- Cut around the perimeter of each piece.
- Leaving the pins in place, you will need need to snip each of the notches, taking care to not snip beyond the end of the "1/4" mark".
- Transfer any of the diagonal markings that are found throughout the pattern.
- Some notches indicate your alterations include, while others will help you fit your pattern piece into your sewing.
- Mark all notches and darts. Using a pin, being together both layers of fabric and the pattern, mark the center of each dart hole, with chalk, wax or other removable, non-permanent tool. A tailor's tuck may also be used.
- Transfer all fold lines, or markings, are indicated by the following symbols:
 They will be found on the Fly Back, Back Back, and your pattern pieces.
 Indicate the side that you will find a notch on the Back Fly Piece.
- OPTIONAL:** Cut fusible interfacing pieces (see **NOTE C** for more info). Pattern pieces that use fusible will be marked with the direction "Cut 2 Fusible" or "Cut 1 Fusible". These pieces are the Collar, Fly Facing, Front Pocket Facing, and Front Pocket Facing. To use the fusible, lay the material down with the glue side facing up. Then place your pattern down and cut around the perimeter of each piece and notch.
- Cut the Front Pocket Bag out of a lighter packing material. If you are not using a packing material, then the Front Pocket Bag may be cut alongside your other pattern pieces. Packing is used to make back in case of thicker material - This will not be a complete replacement for any part of the pins.

NOTE A: FABRIC LESS THAN 54" WIDE
 If your fabric is less than 54" wide, then you will need to cut your pattern pieces individually from the paper template and leave a seam on one side. When you transfer the pattern pieces to your fabric, you will need to use the paper piece as your guide to ensure you are cutting the pieces in the correct direction. The pattern pieces are marked with arrows to indicate the correct direction. If you are using fabric that is less than 54" wide, you will need to use the paper piece as your guide to ensure you are cutting the pieces in the correct direction.

NOTE B: FABRIC WITH A GRAIN OR DIRECTIONAL PATTERN
 If your fabric has a grain or a directional pattern, you will need to use the paper piece as your guide to ensure you are cutting the pieces in the correct direction. The pattern pieces are marked with arrows to indicate the correct direction. If you are using fabric that has a grain or a directional pattern, you will need to use the paper piece as your guide to ensure you are cutting the pieces in the correct direction.

NOTE C: USING FUSIBLE INTERFACING
 Fusible interfacing is a material that is used to add structure and support to your pattern pieces. It is used to reinforce areas that need extra support, such as the collar, cuffs, and pockets. When using fusible interfacing, you will need to use the paper piece as your guide to ensure you are cutting the pieces in the correct direction. The pattern pieces are marked with arrows to indicate the correct direction.



Before cutting your fabric make sure that the pattern is scaled correctly*
 *Some printers and software will automatically scale large size images which will affect the fit.
 The inner square should measure 4" x 4"
 The outer square should measure 12cm x 12cm