

- SUPPLIES NEEDED**
- 2 1/4 YARDS OF 54" WIDE FABRIC
 - SHARP SCISSORS
 - REMOVABLE MARKING MEDIUM (chalk, wax, tailor's rock, etc.)
 - 1 - 24" NON-SEPARATING ZIPPER
 - IRONER
 - SEWING MACHINE
- OPTIONALS**
- 1/2 YARD OF THINNER POCKET FABRIC
 - FUSIBLE INTERFACING

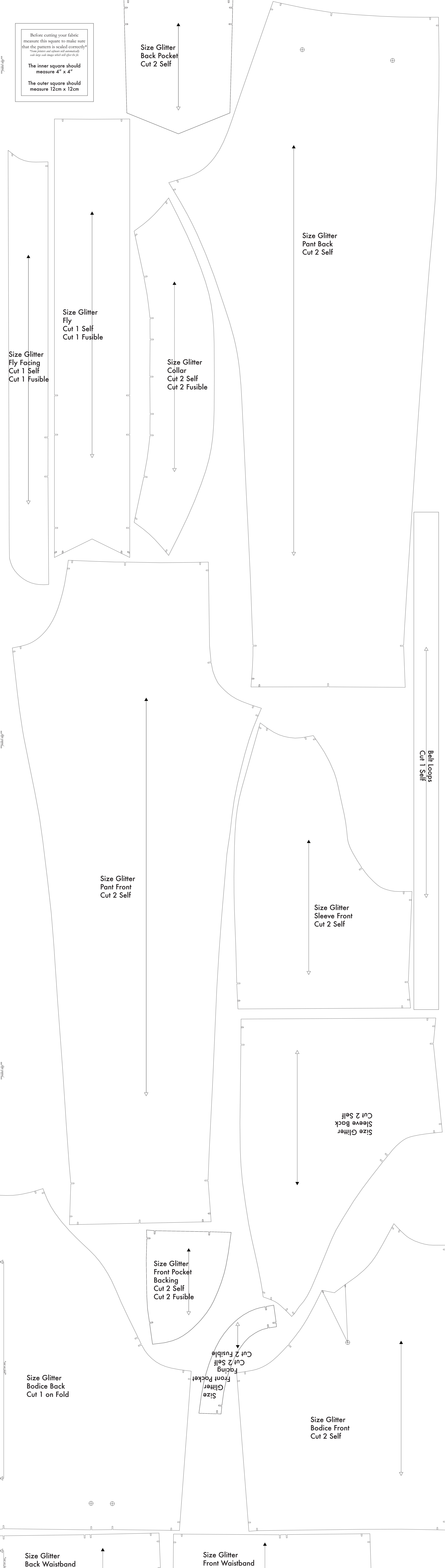
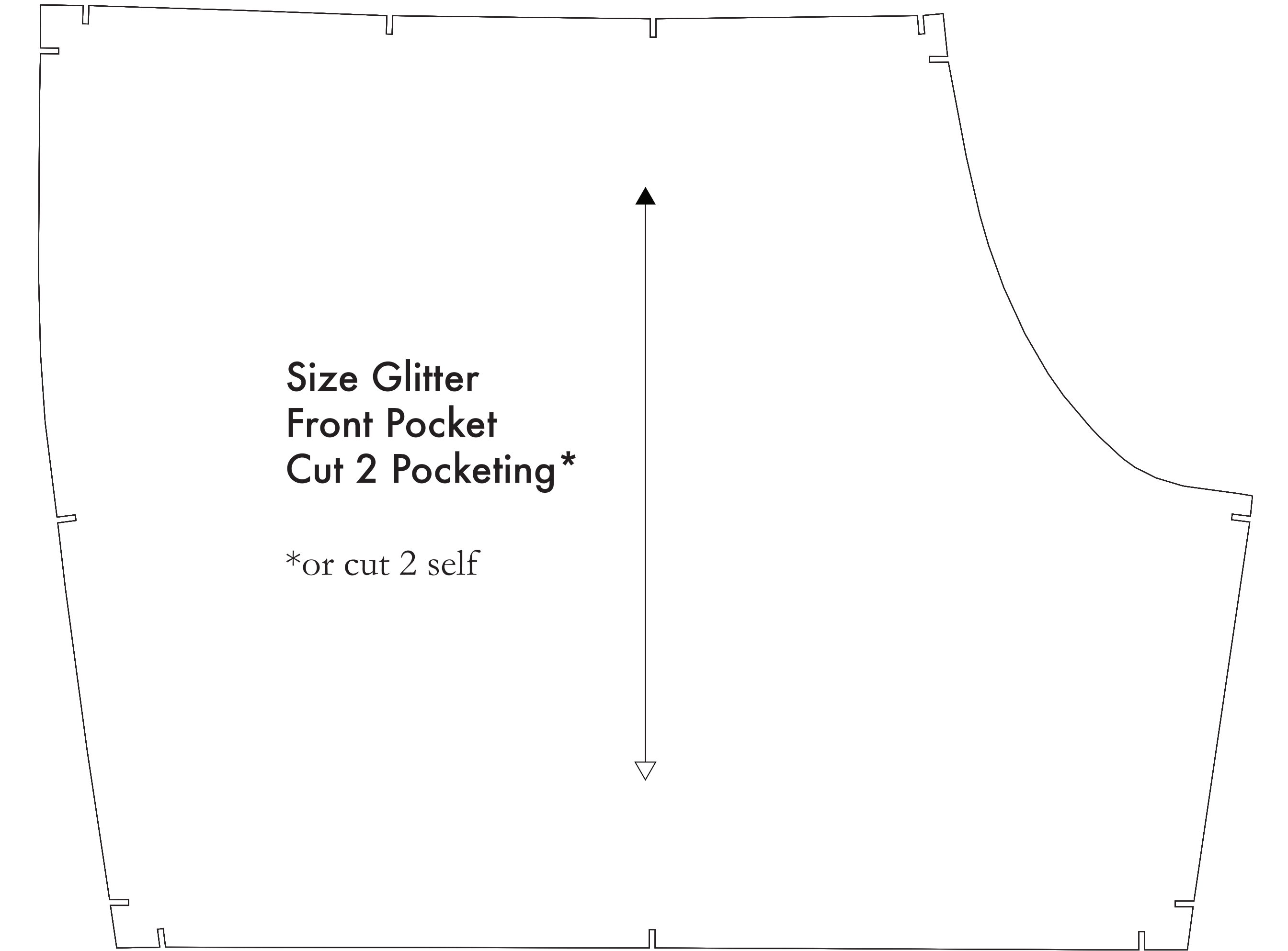
- CUTTING INSTRUCTIONS**
1. Your pattern is on paper that is designed to be printed on sheets of standard size paper and tape the pieces together, or print on a wide format printer (36" or wider). Print shops offer this service for approximately \$12. If available to you, the B2B recommends wide format printing.
 2. Once your pattern is printed, cut along the outermost rectangle to remove any excess paper. This template should fit exactly on a 54" wide or larger piece of fabric that has been folded in half. If your fabric is less than 54" wide, see **NOTE A**. For maximum yield this pattern is laid out for fabric that does not have a direction. For fabric with a nap, such as a velvet or tulle fabric, use a 4" wide directional piece see **NOTE B**.
 3. Fold your fabric in half along the lengthwise grain matching selvage edge to selvage edge. Straddle in the self-folding edge of fabric. This narrow band keeps the fabric from stretching or being. There is an arrow that denotes the grain through out the pattern, always facing the same way. **NOTE 1**
 4. Trace the paper template on top your fabric, matching the folded edge of the fabric with the side of the paper marked "folded edge".
 5. They are throughout the template pinning together both layers of fabric as well as the paper.
 6. Cut around the perimeter of each piece.
 7. Leaving the pins in place, you will need to strip each of the needles, taking care to not strip beyond the end of the U-shape!

- NOTE A: FABRIC LESS THAN 54" WIDE**
 If your fabric is less than 54" wide you will need to cut each piece into multiple pieces from the paper template and piece them together. The paper template is designed to be printed on a 54" wide piece of fabric. To lay the pattern out on a smaller piece of fabric, you will need to cut each piece into multiple pieces from the paper template and piece them together. The paper template is designed to be printed on a 54" wide piece of fabric. To lay the pattern out on a smaller piece of fabric, you will need to cut each piece into multiple pieces from the paper template and piece them together. The paper template is designed to be printed on a 54" wide piece of fabric. To lay the pattern out on a smaller piece of fabric, you will need to cut each piece into multiple pieces from the paper template and piece them together.

- NOTE B: FABRIC WITH NAP OR DIRECTIONAL PATTERN**
 For fabric with a nap such as velvet or tulle, fabric with a directional pattern or for matching stripes, such as a check, you will need to cut the pattern pieces individually taking into account the nap or stripe, ensuring the width of the fabric is the same as the width of the pattern pieces.

- NOTE C: USING FUSIBLE INTERFACING**
 Fusible interfacing is a material that is used to stabilize, strengthen, and add extra support to a garment. While it is a fabric, it is not meant to be sewn into the garment. Instead, these fusible interfacings are light in weight and are meant to be ironed into the fabric. They are used to stabilize, strengthen, and add extra support to a garment. While it is a fabric, it is not meant to be sewn into the garment. Instead, these fusible interfacings are light in weight and are meant to be ironed into the fabric.

- NOTE D: FRONT POCKET BAG**
 The front pocket bag may be cut separately from other pattern pieces. Pinking is used to reduce bulk in cases of thicker material - You will not see an example of pinking on any part of this pattern.



Before cutting your fabric measure this square to make sure that the pattern is scaled correctly*

The inner square should measure 4" x 4"

The outer square should measure 12cm x 12cm

*Use precision and software will automatically scale large web images which will affect the fit.