

**SUPPLIES NEEDED**

- 2 YARDS OF 54" WIDE FABRIC
- SHARP SCISSORS
- REMOVABLE MARKING MEDIUM (chalk, wax, baller's tack, etc.)
- 1 - 24" NON-SEPARATING ZIPPER
- THREAD
- SEWING MACHINE (optional)
- 1/2 YARD OF THINNER POCKET FABRIC
- FUSIBLE INTERFACING

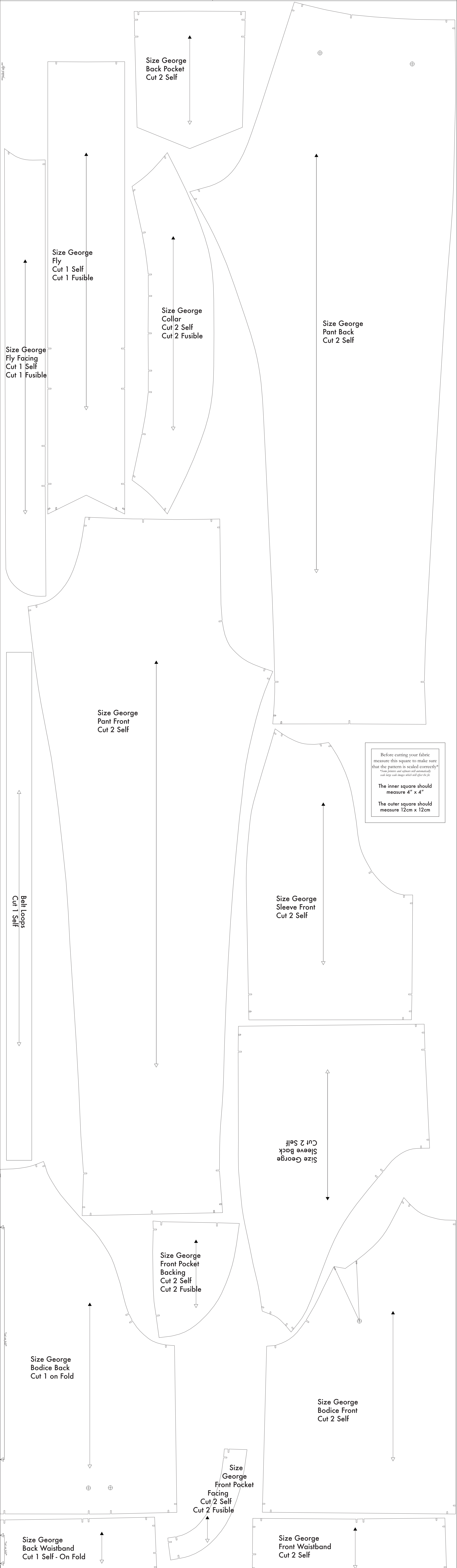
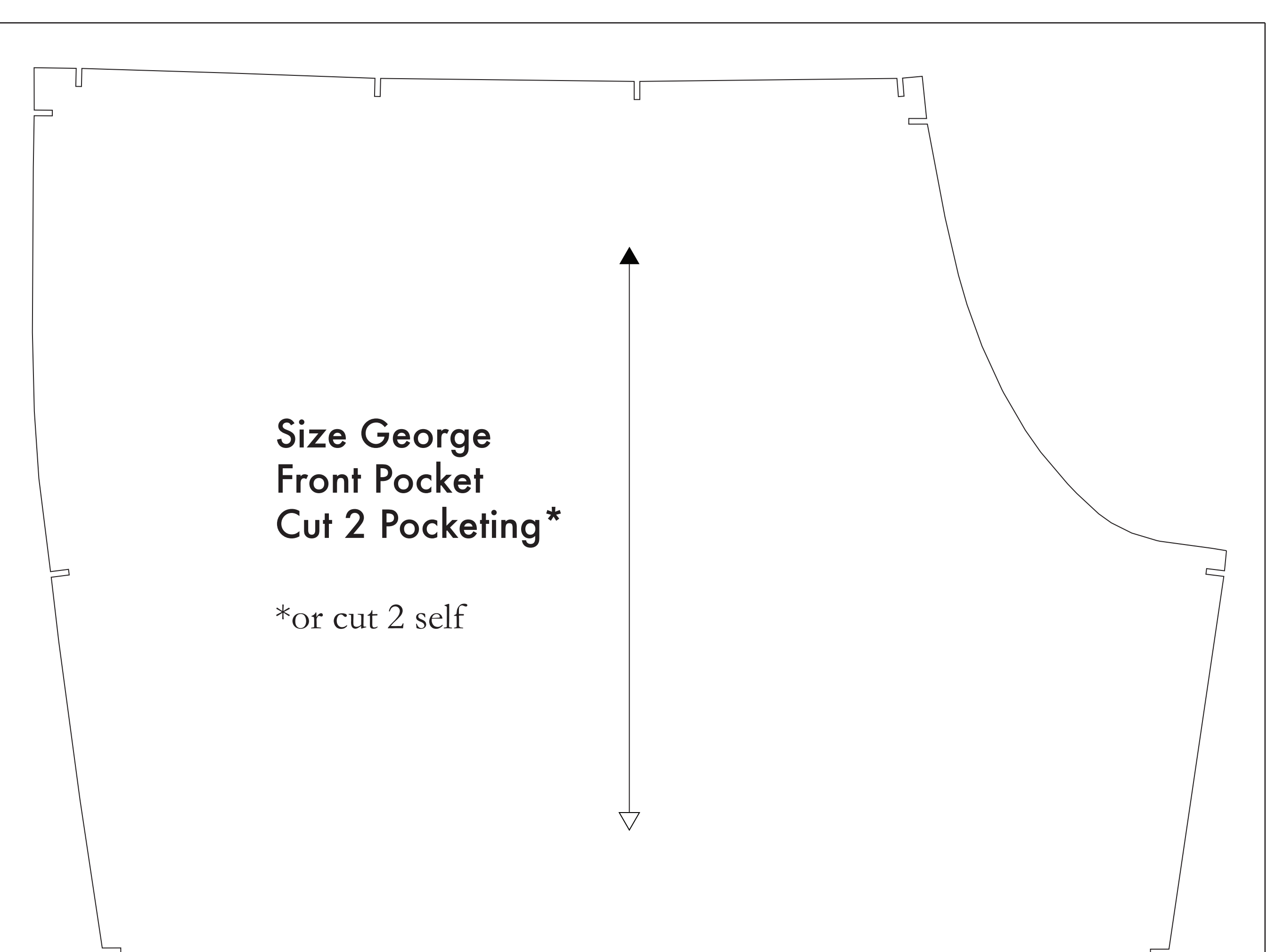
**CUTTING INSTRUCTIONS**

1. Print pattern. You can print this document third on sheets of standard size paper and tape the pieces together, or print on a wide-format printer (36" or wider). Print shops offer this service for approximately \$12. If available to you, the B2B recommends wide-format printing.
2. Check your paper pattern is printed, use along the centerline rectangle to remove any excess paper. This template should fit exactly on a 36" wide or larger piece of fabric that has been folded in half. If your fabric is less than 36" wide use **NOTE A**. For maximum fold this pattern is laid out for fabric that does not have a direction. For fabric with a grain, such as velvet or wadding or fabric with a clear directional print see **NOTE B**.
3. Fold your fabric in half along the longwise grain matching selvedge edge to selvedge edge. Selvedge is the self-finished edge of fabric. This narrow border keeps the fabric from stretching or fraying. When it has an edge that resembles fine fringe, though not as frequently, a clearly finished line will be found. Avoid this edge to prevent cut pieces on the wrong side of the fabric. The narrow border keeps the fabric from stretching or fraying. When it has an edge that resembles fine fringe, though not as frequently, a clearly finished line will be found. Avoid this edge to prevent cut pieces on the wrong side of the fabric.
4. Place the paper template on top your fabric, matching the linked edge of the fabric with the side of the paper marked "linked edge."
5. Trace your pattern through the template pinning together both layers of fabric as well as the paper.
6. Cut around the perimeter of each piece.
7. Leaving the pins in place, you will need to snip each of the notches, taking care to not snip beyond the end of the U-shaped notches. **NOTE D** indicates markings that are found throughout the pattern. Some notches indicate seam allowances, while others will help you align or square your side seam.
8. Mark all inseam shell holes. Using a pin, bring together both layers of fabric and the pattern, mark the center of each shell hole with chalk, wax or other removable, non-permanent tool. A shell's tack may also be used. This will be used to the final back, under back and front pattern.
9. **OPTIONAL:** Cut fusible interfacing pieces for **NOTE C** for most items. Fusible pieces that are fusible will be marked with the direction "Cut 2 Fusible" or "Cut 1 Fusible". These pieces are: the Collar, Fly, Fly Facing, Front Pocket Facing, and Front Pocket Backing. To cut the fusible, lay the material down with the glue side facing up, then place your pattern down and cut around the perimeter of each piece and notch.
10. Cut the Front Pocket Bag out of a lighter weighting material. If you are not using a pocketing material, then the Front Pocket Bag may be cut alongside your other pattern pieces. Poking a nail in under bulk is an issue of fabric material - 3 or so will find an example of pocketing on any part of the jumps.

**NOTE A: FABRIC LESS THAN 34" WIDE**  
If your fabric is less than 34" wide you will need to cut each pattern piece individually from the paper template and create a piece of your fabric using care to match the grain across the entire piece. The grain direction is indicated on all pattern pieces. The grain direction is indicated on all pattern pieces. The grain direction is indicated on all pattern pieces. The grain direction is indicated on all pattern pieces.

**NOTE B: FABRIC WITH NAP OR DIRECTIONAL PATTERN**  
For fabric with a nap, such as velvet or wadding, fabric with a clear directional print, or fabric with a directional pattern, such as plaid, you will need to cut the pattern pieces individually from the paper template, ensuring the selvedge edge of your fabric faces the pattern piece in the same direction.

**NOTE C: USING FUSIBLE INTERFACING**  
Fusible interfacing is used to add structure, strength, and stability to areas such as a pocket. While the use of fusible interfacing is optional, the B2B strongly recommends a light to medium weight non-woven or woven fusible interfacing in the construction of JUMPSUIT.



Before cutting your fabric measure this square to make sure that the pattern is scaled correctly\*  
\*Some printers and software will automatically scale large scale images which will affect the fit.  
The inner square should measure 4" x 4"  
The outer square should measure 12cm x 12cm