

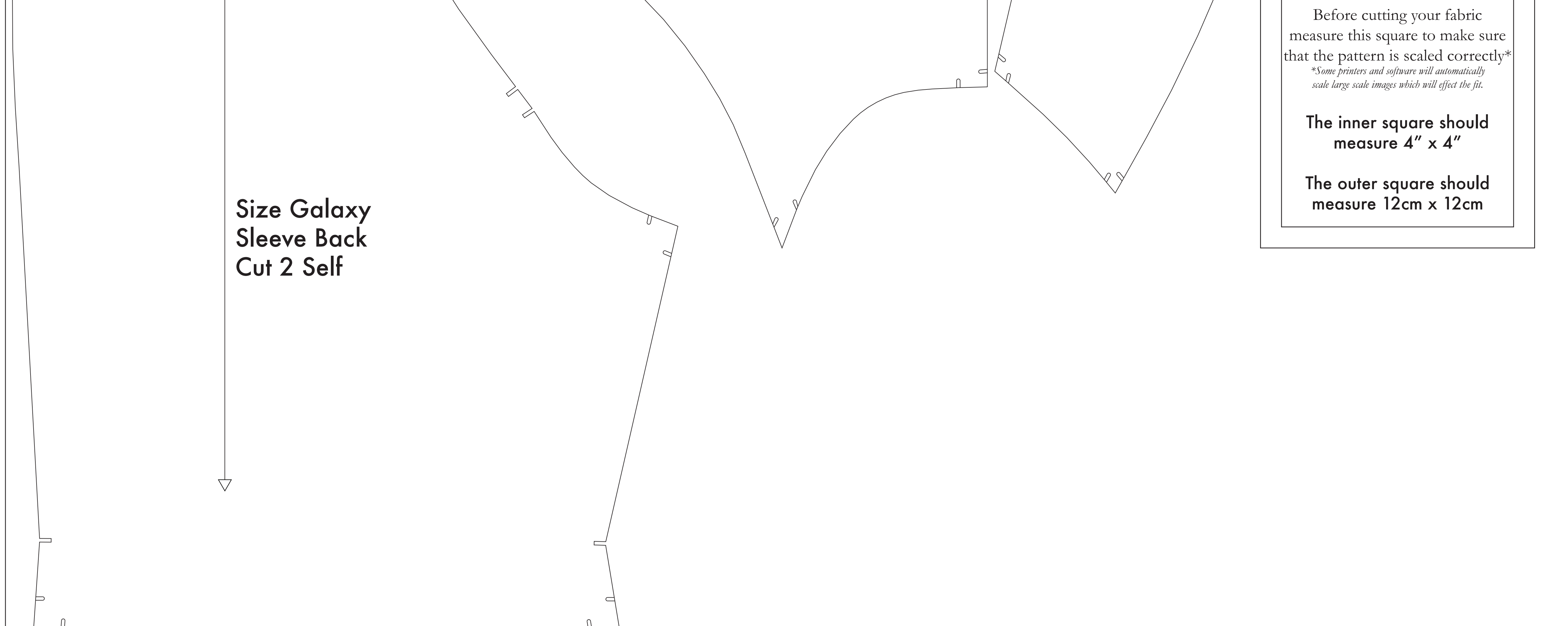
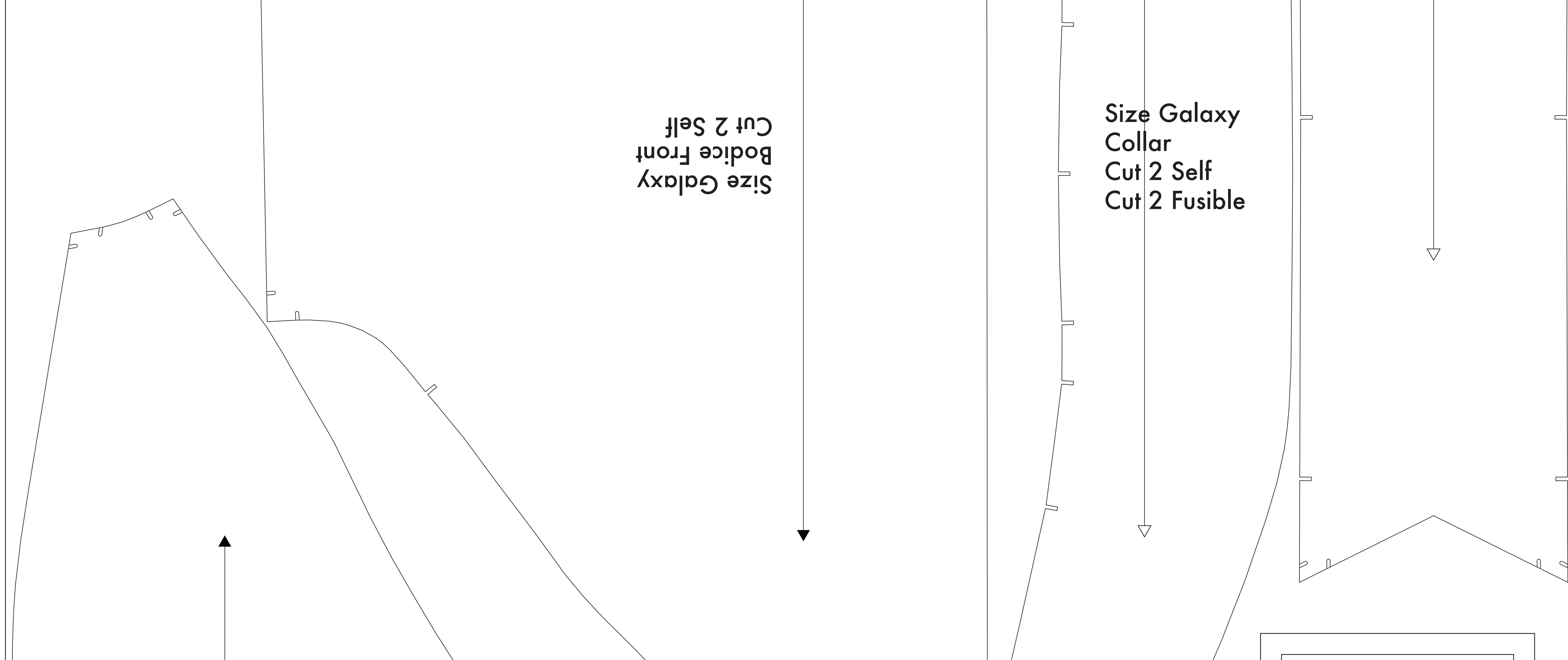
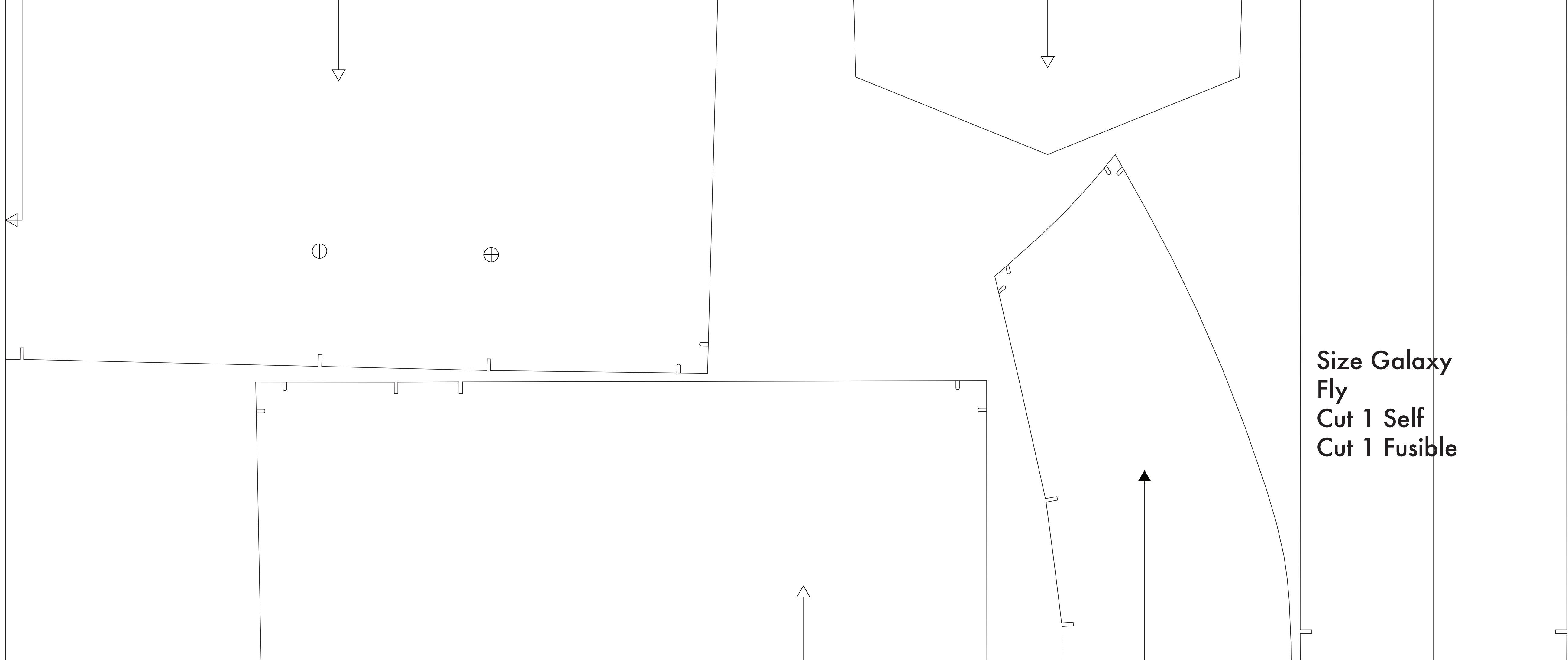
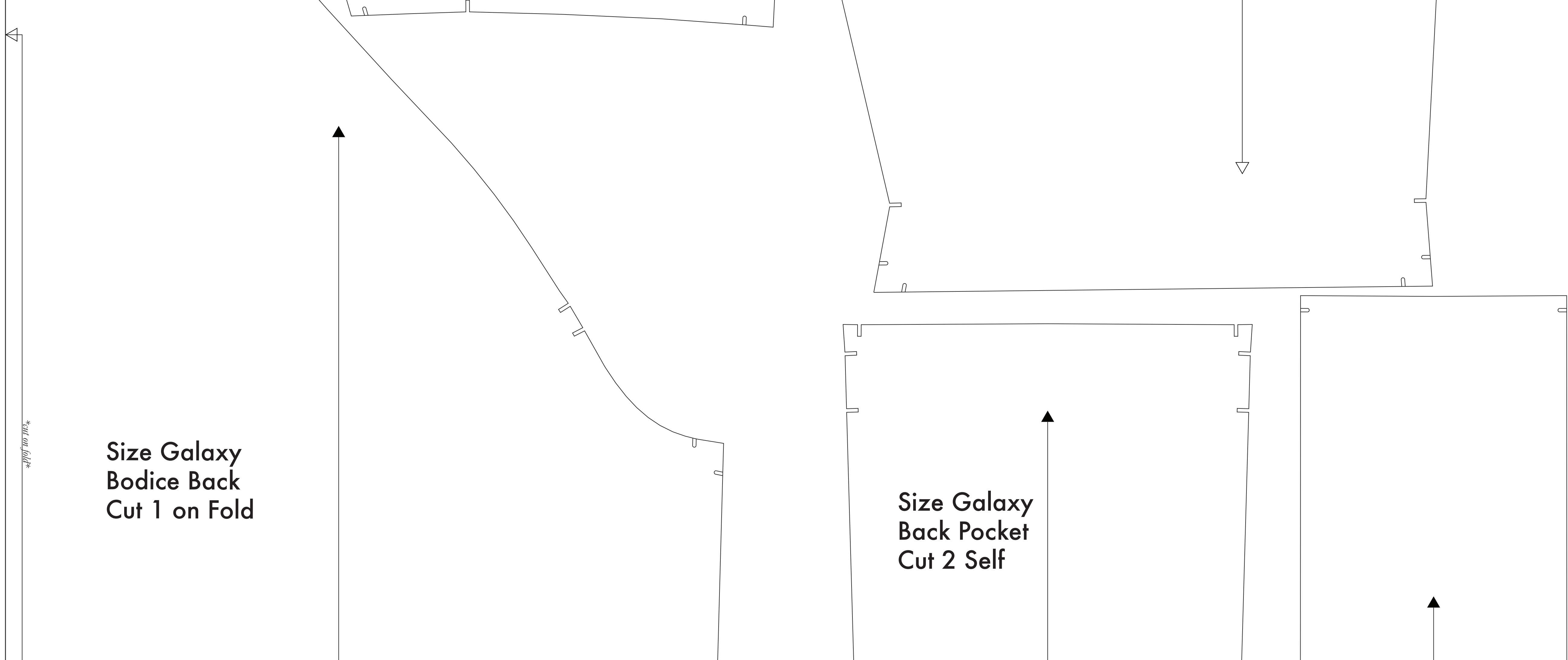
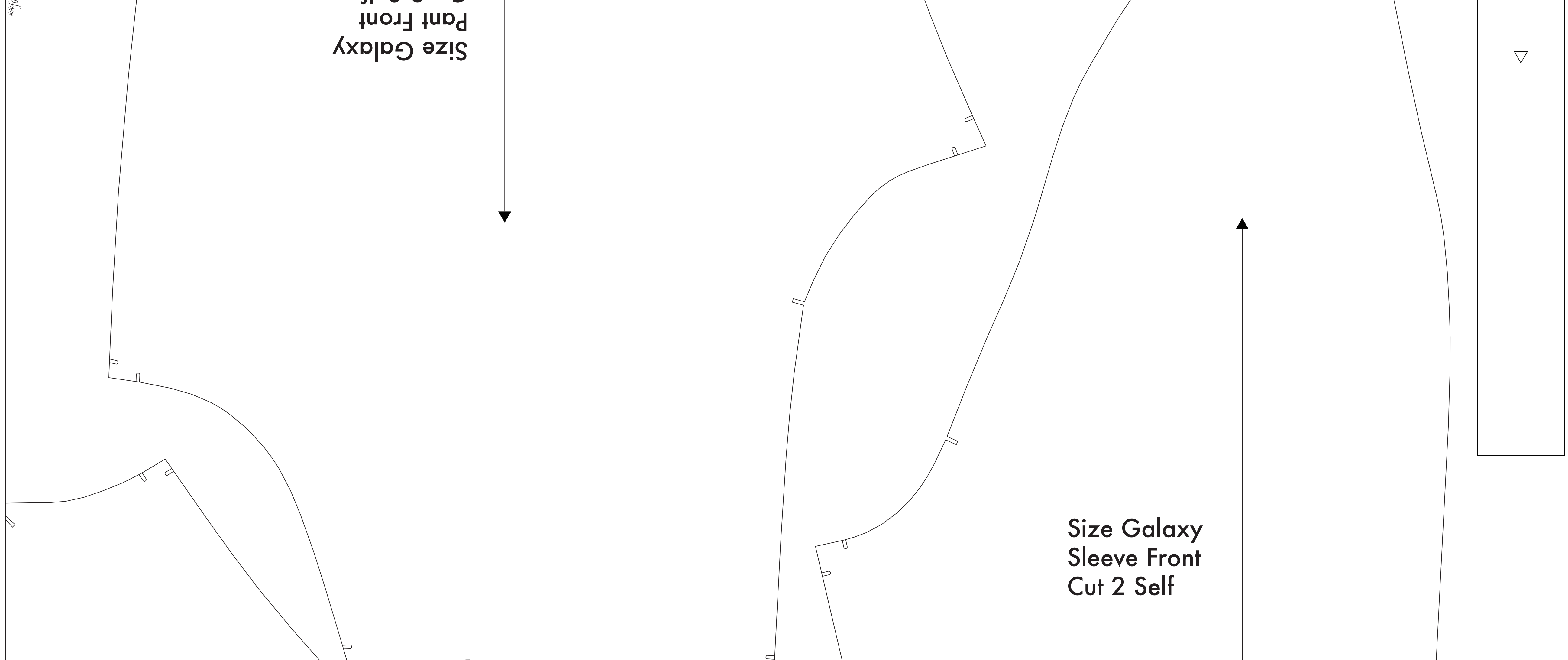
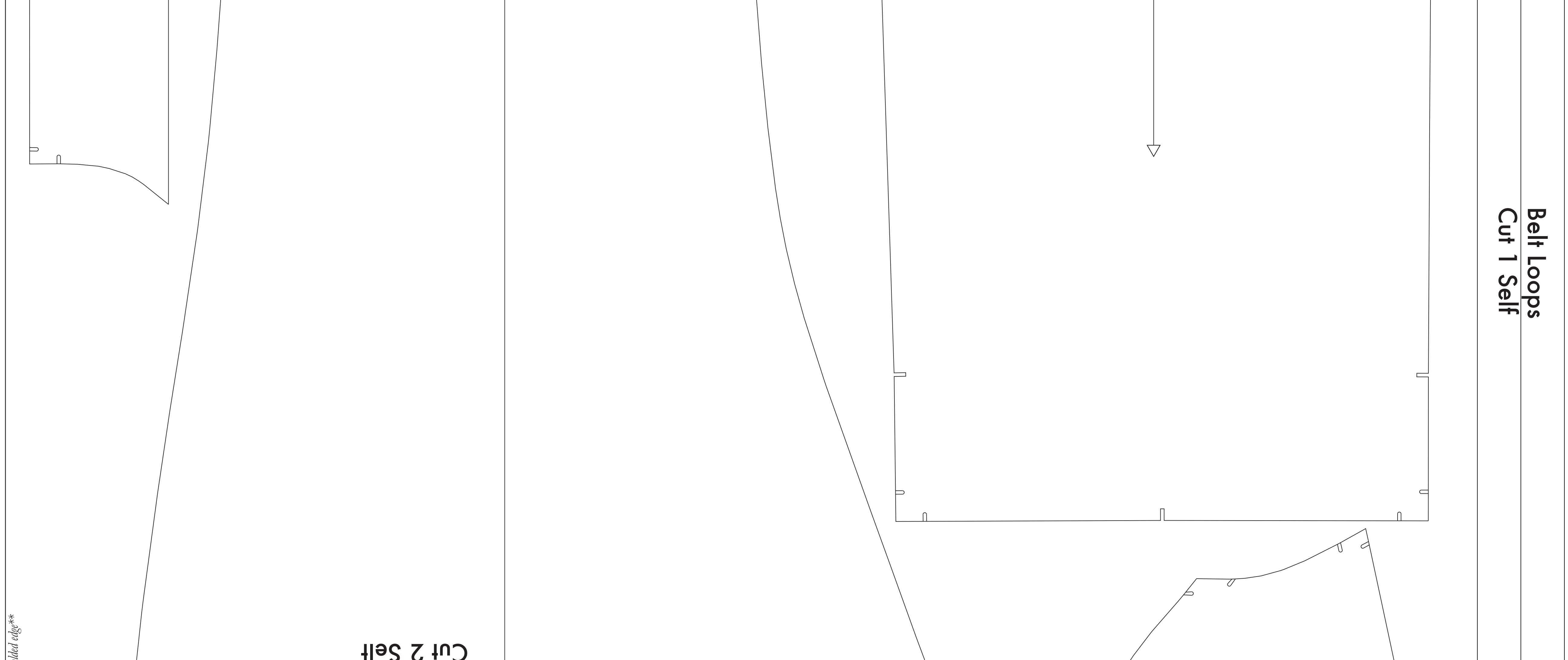
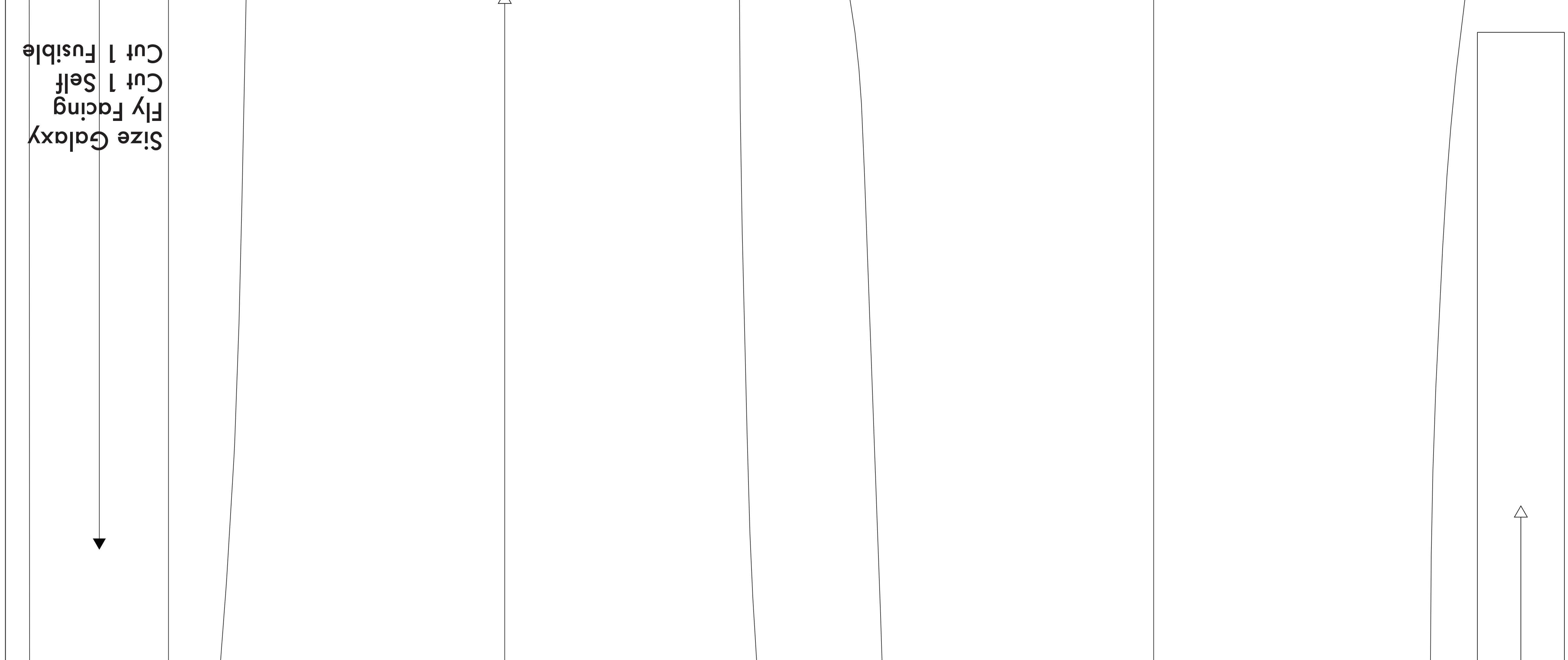
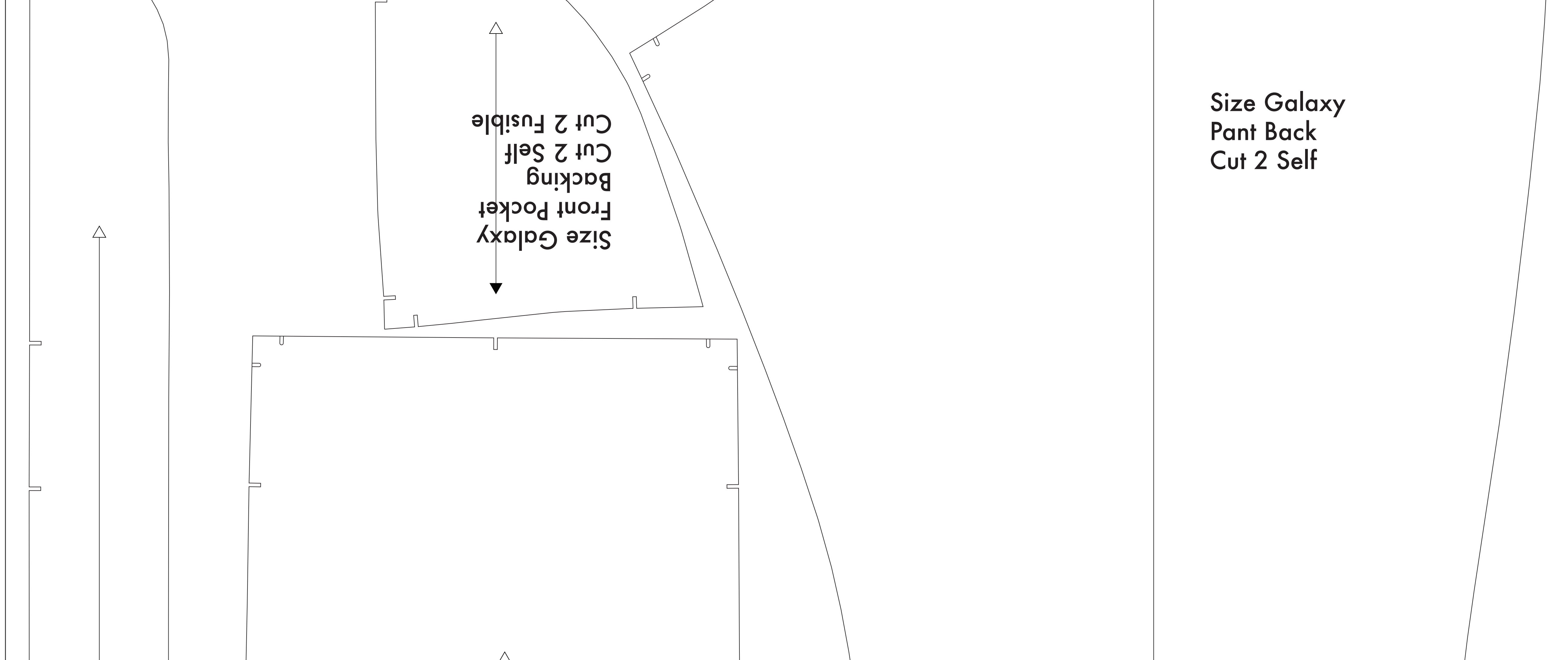
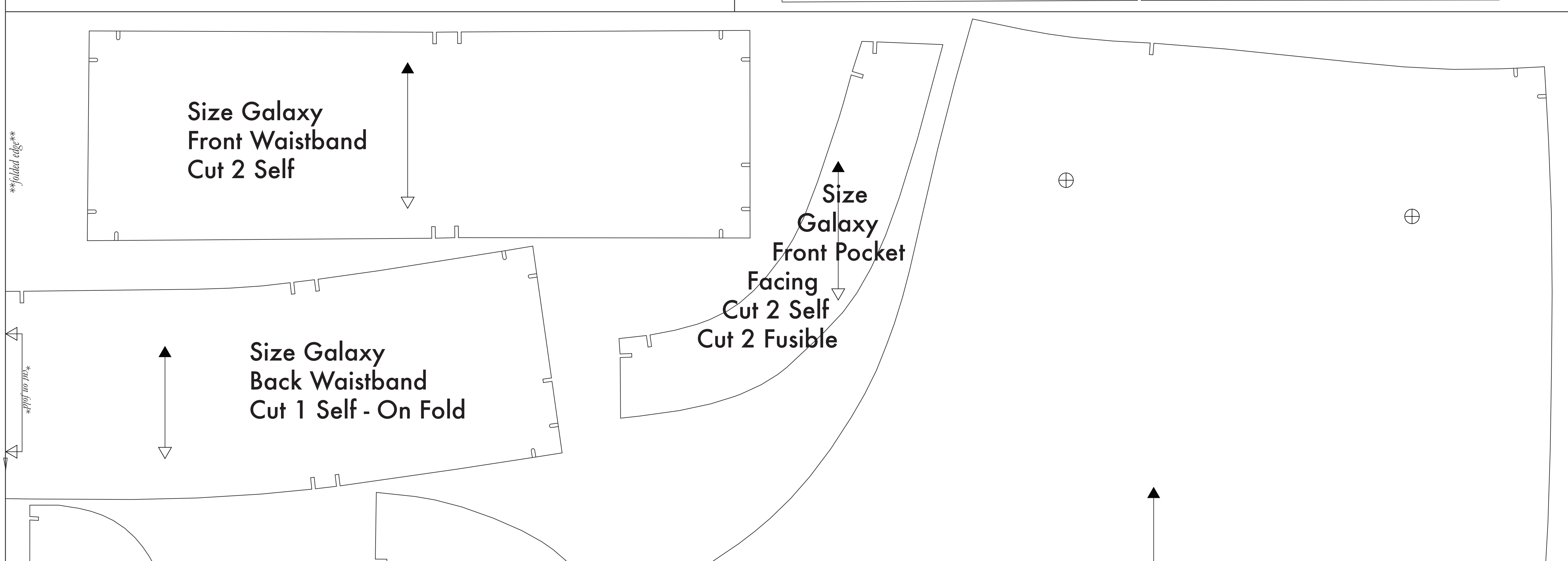
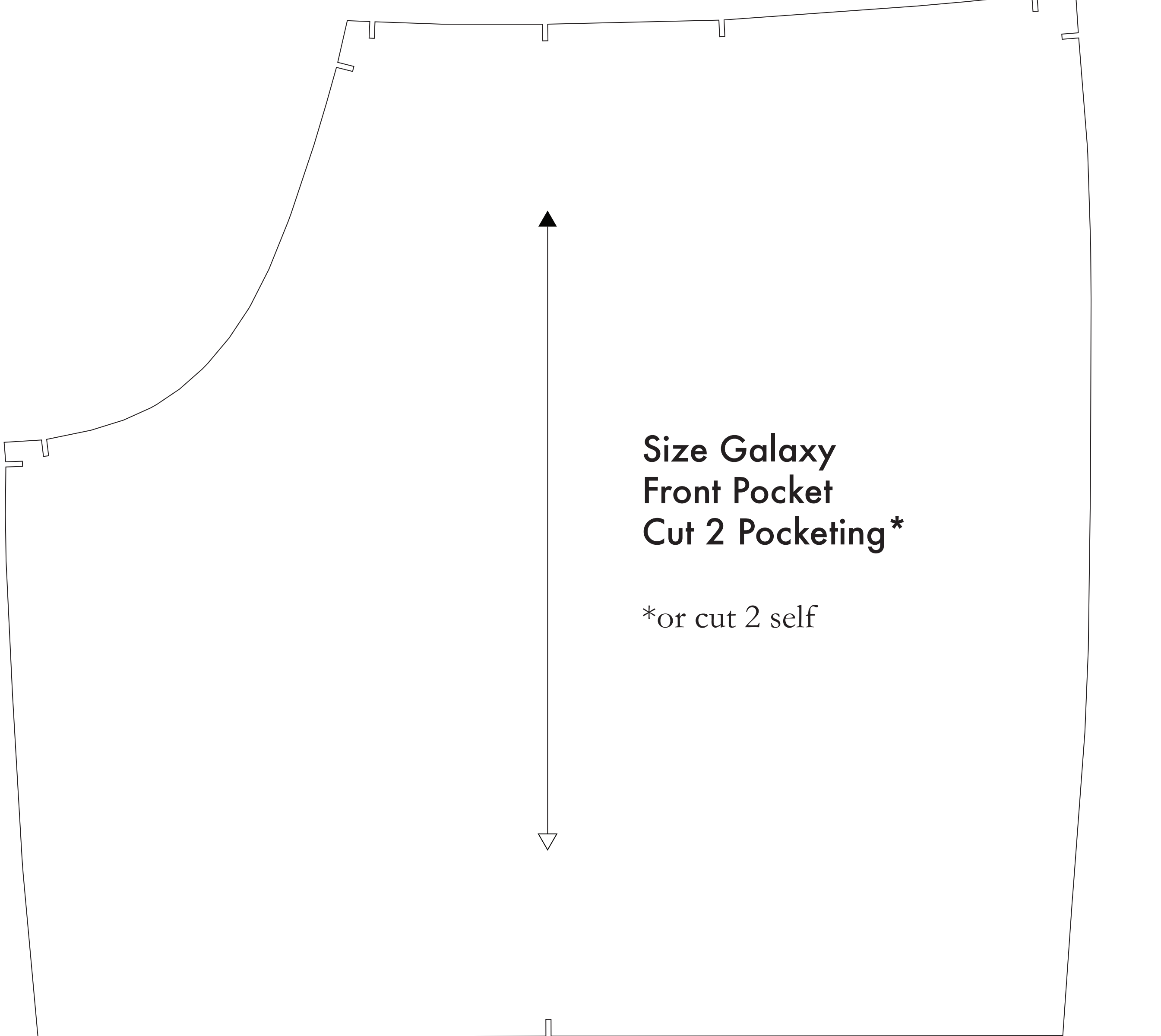
- SUPPLIES NEEDED**
- 1/4 YARD OF 54" WIDE FABRIC
 - SHARP SCISSORS
 - REMOVABLE MARKING MEDIUM (chalk, wax, tailor's tack, etc.)
 - 1 - 26" NON-SEPARATING ZIPPER
 - THREAD
 - SEWING MACHINE (optional)
 - 1/2 YARD OF THINNER POCKET FABRIC (optional)
 - FUSIBLE INTERFACING

- CUTTING INSTRUCTIONS**
1. Print pattern. You can print this document flat on sheets of standard size paper and tape the pieces together, or print on a wide format printer (24" or wider). Print sheets offer this service for approximately \$12. If available to you, the RDS recommends wide format printing.
 2. Check your printer's printed line along the cutlines for accuracy. This template should be cut on a 14" wide or larger piece of fabric that has been folded in half. If your fabric is less than 14" wide use **NOTE A**. For maximum size the pattern is laid out for fabric that does not have a direction. For fabric with a nap such as velvet or corduroy or fabric with a clear directional print see **NOTE B**. For fabric with a pleat or ruffle, cut along the lengthwise grain matching selvage edge to selvage edge. Sewage in the self finished edge of fabric. The narrow border from overlocking or finishing. Check if the selvage edge that resembles the fringe, though not as frequently, a clearly finished line will be found. Avoid this edge in your cut pieces as the texture frequently differs from the main body of the fabric.
 3. Place the paper template on top of your fabric, matching the folded edge of the fabric with the side of the paper marked "folded edge".
 4. Place pins throughout the template pinning together both layers of fabric as well as the paper.
 5. Cut around the perimeter of each piece.
 6. Leaving the pins in place, you will next need to strip each of the notches, taking care to not strip beyond the end of the fabric.
 7. Marking on the 1" shaped markings that are placed throughout the pattern.
 8. Mark all inner and outer notches, taking care to not strip beyond the end of the fabric.
 9. Mark all inner and outer notches, taking care to not strip beyond the end of the fabric.
 10. Mark all inner and outer notches, taking care to not strip beyond the end of the fabric.
 11. Mark all inner and outer notches, taking care to not strip beyond the end of the fabric.
 12. Mark all inner and outer notches, taking care to not strip beyond the end of the fabric.
 13. Mark all inner and outer notches, taking care to not strip beyond the end of the fabric.
 14. Mark all inner and outer notches, taking care to not strip beyond the end of the fabric.
 15. Mark all inner and outer notches, taking care to not strip beyond the end of the fabric.
 16. Mark all inner and outer notches, taking care to not strip beyond the end of the fabric.
 17. Mark all inner and outer notches, taking care to not strip beyond the end of the fabric.
 18. Mark all inner and outer notches, taking care to not strip beyond the end of the fabric.
 19. Mark all inner and outer notches, taking care to not strip beyond the end of the fabric.
 20. Mark all inner and outer notches, taking care to not strip beyond the end of the fabric.
 21. Mark all inner and outer notches, taking care to not strip beyond the end of the fabric.
 22. Mark all inner and outer notches, taking care to not strip beyond the end of the fabric.
 23. Mark all inner and outer notches, taking care to not strip beyond the end of the fabric.
 24. Mark all inner and outer notches, taking care to not strip beyond the end of the fabric.
 25. Mark all inner and outer notches, taking care to not strip beyond the end of the fabric.
 26. Mark all inner and outer notches, taking care to not strip beyond the end of the fabric.
 27. Mark all inner and outer notches, taking care to not strip beyond the end of the fabric.
 28. Mark all inner and outer notches, taking care to not strip beyond the end of the fabric.
 29. Mark all inner and outer notches, taking care to not strip beyond the end of the fabric.
 30. Mark all inner and outer notches, taking care to not strip beyond the end of the fabric.
 31. Mark all inner and outer notches, taking care to not strip beyond the end of the fabric.
 32. Mark all inner and outer notches, taking care to not strip beyond the end of the fabric.
 33. Mark all inner and outer notches, taking care to not strip beyond the end of the fabric.
 34. Mark all inner and outer notches, taking care to not strip beyond the end of the fabric.
 35. Mark all inner and outer notches, taking care to not strip beyond the end of the fabric.
 36. Mark all inner and outer notches, taking care to not strip beyond the end of the fabric.
 37. Mark all inner and outer notches, taking care to not strip beyond the end of the fabric.
 38. Mark all inner and outer notches, taking care to not strip beyond the end of the fabric.
 39. Mark all inner and outer notches, taking care to not strip beyond the end of the fabric.
 40. Mark all inner and outer notches, taking care to not strip beyond the end of the fabric.
 41. Mark all inner and outer notches, taking care to not strip beyond the end of the fabric.
 42. Mark all inner and outer notches, taking care to not strip beyond the end of the fabric.
 43. Mark all inner and outer notches, taking care to not strip beyond the end of the fabric.
 44. Mark all inner and outer notches, taking care to not strip beyond the end of the fabric.
 45. Mark all inner and outer notches, taking care to not strip beyond the end of the fabric.
 46. Mark all inner and outer notches, taking care to not strip beyond the end of the fabric.
 47. Mark all inner and outer notches, taking care to not strip beyond the end of the fabric.
 48. Mark all inner and outer notches, taking care to not strip beyond the end of the fabric.
 49. Mark all inner and outer notches, taking care to not strip beyond the end of the fabric.
 50. Mark all inner and outer notches, taking care to not strip beyond the end of the fabric.
 51. Mark all inner and outer notches, taking care to not strip beyond the end of the fabric.
 52. Mark all inner and outer notches, taking care to not strip beyond the end of the fabric.
 53. Mark all inner and outer notches, taking care to not strip beyond the end of the fabric.
 54. Mark all inner and outer notches, taking care to not strip beyond the end of the fabric.
 55. Mark all inner and outer notches, taking care to not strip beyond the end of the fabric.
 56. Mark all inner and outer notches, taking care to not strip beyond the end of the fabric.
 57. Mark all inner and outer notches, taking care to not strip beyond the end of the fabric.
 58. Mark all inner and outer notches, taking care to not strip beyond the end of the fabric.
 59. Mark all inner and outer notches, taking care to not strip beyond the end of the fabric.
 60. Mark all inner and outer notches, taking care to not strip beyond the end of the fabric.
 61. Mark all inner and outer notches, taking care to not strip beyond the end of the fabric.
 62. Mark all inner and outer notches, taking care to not strip beyond the end of the fabric.
 63. Mark all inner and outer notches, taking care to not strip beyond the end of the fabric.
 64. Mark all inner and outer notches, taking care to not strip beyond the end of the fabric.
 65. Mark all inner and outer notches, taking care to not strip beyond the end of the fabric.
 66. Mark all inner and outer notches, taking care to not strip beyond the end of the fabric.
 67. Mark all inner and outer notches, taking care to not strip beyond the end of the fabric.
 68. Mark all inner and outer notches, taking care to not strip beyond the end of the fabric.
 69. Mark all inner and outer notches, taking care to not strip beyond the end of the fabric.
 70. Mark all inner and outer notches, taking care to not strip beyond the end of the fabric.
 71. Mark all inner and outer notches, taking care to not strip beyond the end of the fabric.
 72. Mark all inner and outer notches, taking care to not strip beyond the end of the fabric.
 73. Mark all inner and outer notches, taking care to not strip beyond the end of the fabric.
 74. Mark all inner and outer notches, taking care to not strip beyond the end of the fabric.
 75. Mark all inner and outer notches, taking care to not strip beyond the end of the fabric.
 76. Mark all inner and outer notches, taking care to not strip beyond the end of the fabric.
 77. Mark all inner and outer notches, taking care to not strip beyond the end of the fabric.
 78. Mark all inner and outer notches, taking care to not strip beyond the end of the fabric.
 79. Mark all inner and outer notches, taking care to not strip beyond the end of the fabric.
 80. Mark all inner and outer notches, taking care to not strip beyond the end of the fabric.
 81. Mark all inner and outer notches, taking care to not strip beyond the end of the fabric.
 82. Mark all inner and outer notches, taking care to not strip beyond the end of the fabric.
 83. Mark all inner and outer notches, taking care to not strip beyond the end of the fabric.
 84. Mark all inner and outer notches, taking care to not strip beyond the end of the fabric.
 85. Mark all inner and outer notches, taking care to not strip beyond the end of the fabric.
 86. Mark all inner and outer notches, taking care to not strip beyond the end of the fabric.
 87. Mark all inner and outer notches, taking care to not strip beyond the end of the fabric.
 88. Mark all inner and outer notches, taking care to not strip beyond the end of the fabric.
 89. Mark all inner and outer notches, taking care to not strip beyond the end of the fabric.
 90. Mark all inner and outer notches, taking care to not strip beyond the end of the fabric.
 91. Mark all inner and outer notches, taking care to not strip beyond the end of the fabric.
 92. Mark all inner and outer notches, taking care to not strip beyond the end of the fabric.
 93. Mark all inner and outer notches, taking care to not strip beyond the end of the fabric.
 94. Mark all inner and outer notches, taking care to not strip beyond the end of the fabric.
 95. Mark all inner and outer notches, taking care to not strip beyond the end of the fabric.
 96. Mark all inner and outer notches, taking care to not strip beyond the end of the fabric.
 97. Mark all inner and outer notches, taking care to not strip beyond the end of the fabric.
 98. Mark all inner and outer notches, taking care to not strip beyond the end of the fabric.
 99. Mark all inner and outer notches, taking care to not strip beyond the end of the fabric.
 100. Mark all inner and outer notches, taking care to not strip beyond the end of the fabric.

NOTE A: FABRIC LESS THAN 54" WIDE
If your fabric is less than 54" wide, you will need to cut your pattern pieces individually from the paper template and piece together to create the final pieces. The pattern pieces are laid out for fabric that does not have a direction. For fabric with a nap such as velvet or corduroy or fabric with a clear directional print see **NOTE B**. For fabric with a pleat or ruffle, cut along the lengthwise grain matching selvage edge to selvage edge. Sewage in the self finished edge of fabric. The narrow border from overlocking or finishing. Check if the selvage edge that resembles the fringe, though not as frequently, a clearly finished line will be found. Avoid this edge in your cut pieces as the texture frequently differs from the main body of the fabric.

NOTE B: FABRIC WITH NAP OR DIRECTIONAL PATTERN
For fabric with a nap or directional pattern, such as velvet or corduroy or fabric with a clear directional print, you must cut your pattern pieces individually from the paper template and piece together to create the final pieces. The pattern pieces are laid out for fabric that does not have a direction. For fabric with a nap such as velvet or corduroy or fabric with a clear directional print see **NOTE B**. For fabric with a pleat or ruffle, cut along the lengthwise grain matching selvage edge to selvage edge. Sewage in the self finished edge of fabric. The narrow border from overlocking or finishing. Check if the selvage edge that resembles the fringe, though not as frequently, a clearly finished line will be found. Avoid this edge in your cut pieces as the texture frequently differs from the main body of the fabric.

NOTE C: USING FUSIBLE INTERFACING
Fusible interfacing is optional but is used to reinforce the waistband and pocket bags. If you are using fusible interfacing, you must cut your pattern pieces individually from the paper template and piece together to create the final pieces. The pattern pieces are laid out for fabric that does not have a direction. For fabric with a nap such as velvet or corduroy or fabric with a clear directional print see **NOTE B**. For fabric with a pleat or ruffle, cut along the lengthwise grain matching selvage edge to selvage edge. Sewage in the self finished edge of fabric. The narrow border from overlocking or finishing. Check if the selvage edge that resembles the fringe, though not as frequently, a clearly finished line will be found. Avoid this edge in your cut pieces as the texture frequently differs from the main body of the fabric.



Before cutting your fabric measure this square to make sure that the pattern is scaled correctly!
*Some printers and software will automatically scale large scale images which will affect the fit.

The inner square should measure 4" x 4"

The outer square should measure 12cm x 12cm

Belt Loops
Cut 1 Self