

- SUPPLIES NEEDED**
- 3 YARDS OF 34" WIDE FABRIC
 - SHARP SCISSORS
 - REMOVABLE MARKING MEDIUM (chalk, wax, tailor's tack, etc.)
 - 1 24" NONSEPARATING ZIPPER
 - THREAD
 - SEWING MACHINE
- optional*
- 1 1/2 YARD OF THINNER POCKET FABRIC
 - FUSIBLE INTERFACING

CUTTING INSTRUCTIONS

- Print pattern. You can print this document tiled on sheets of standard size paper and tape the pieces together, or print on a wide-format printer (36" or wider). Please always refer to the notes for approximations. If it is available to you, the PDF recommends wide-format printing.
- Once your pattern is printed, cut along the convenience rectangles to remove any excess paper. This template should fit exactly on a 34" wide or larger piece of fabric that has been folded in half. If your fabric is less than 34" wide, see **NOTE A**. For maximum yield this pattern is laid out for fabric that does not have a direction. For fabric with a nap, such as velvet or corduroy or fabric with a clear directional print see **NOTE B**.
- Hold your fabric in half along the lengthwise grain matching selvage edge to selvage edge. Schedule in the self-finished edge of fabric. This narrow border keeps the fabric from unraveling or fraying. When it has an edge that exceeds this finish, though not as frequently, a clearly finished line will be found. Sewal this edge in your cut pieces as the texture frequently differs from the main body of the fabric.
- Place the paper template on top your fabric, matching the folded edge of the fabric with the side of the paper marked "folded edge".
- Place pins throughout the template pressing together both layers of fabric as well as the paper.
- Cut around the perimeter of each piece.
- Leaving the pins in place, you will next need to strip each of the notches, taking care to not strip beyond the end of the "d" shaped

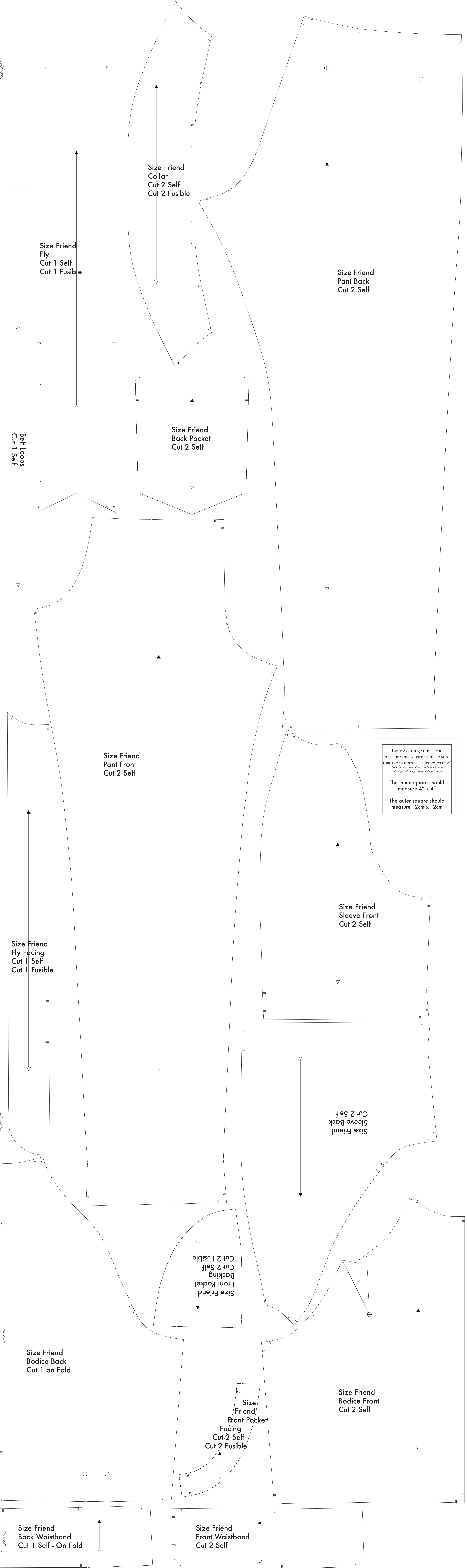
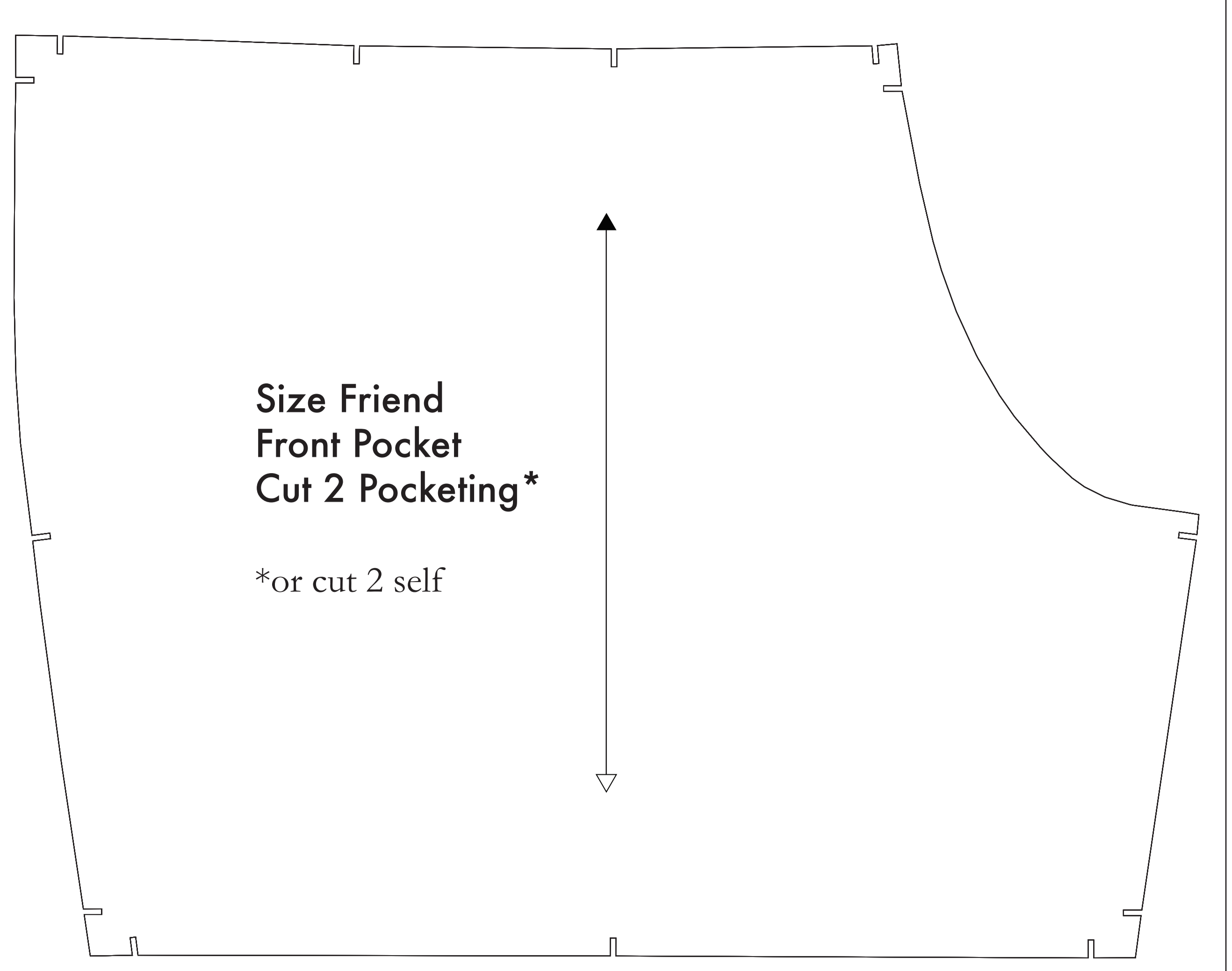
- Notches are the "d" shaped markings that are found throughout the pattern. Some include notches from adhesive webbing, while others are for high-pin. Do not remove these notches.
- Mark all corner notches. Using a pin, bring together both layers of fabric and the pattern, mark the corner of each notch with chalk, wax, or other removable, nonpermanent tool. A tailor's tack may also be used. This marker will help you mark up the fabric later.
- Use the pattern pieces as marked in the following order:
 This will be found on the Front Fly, Bodice Back, and your pattern pieces that have the nap will find a mark on the Bodice Front.

- OPTIONAL:** Cut fusible interfacing pieces (see **NOTE C** for more info). Pattern pieces that use fusible will be marked with the direction "Cut 2 Fusible" or "Cut 1 Fusible". These pieces are the Collar, Fly, Fly Facing, Front Pocket Facing, and Front Pocket Backing. Try on the fusible, lay the material down with the glue side facing up, then place your pattern down and cut around the perimeter of each piece and notch.
- Cut the Front Pocket Bag out of a lighter-weight material. If you are not using a pre-cutting material, then the Front Pocket Bag may be cut alongside your other pattern pieces. *Pushing is used to make hole in case of thicker material* - You will find an example of pushing on every page of this page.

NOTE A: FABRIC LESS THAN 34" WIDE
 If your fabric is less than 34" wide, you will need to use each pattern piece individually. Print the paper template and trace it onto your fabric using pins to position the pattern pieces on the fabric as intended. The grain direction and position are all marked on each pattern piece for ease of use. To help the pattern-making tool for the single line with notches, as shown. These notches indicate the direction, grain, of the fabric. When cutting, follow your fabric then trace the pattern onto the fabric. The width of your fabric is the same as the width of the paper template. The grain direction is the same as the grain direction of the fabric. When the top and bottom areas are equivalent from the fold of your fabric then the pattern piece is correctly positioned.

NOTE B: FABRIC WITH NAP OR DIRECTIONAL PATTERN
 For fabric with a nap or a clear directional fabric such as the directional print, or for marking nap, such as velvet, you will need to use the pattern pieces individually due to the direction of the fabric. The "d" shaped corner found on each pattern piece, as shown.

NOTE C: USING FUSIBLE INTERFACING
 Fusible interfacing is a material that is used to reinforce, strengthen, and stabilize certain pieces in a garment. While the use of fusible interfacing is optional, the Recommended Interfacing is highly recommended to ensure single-use items are more fusible interfacing on the convenience of JUMPSUIT.



Before cutting your fabric measure this square to make sure that the pattern is scaled correctly*
 *Some printers and software will automatically scale large scale images which will affect the fit.
 The inner square should measure 4" x 4"
 The outer square should measure 12cm x 12cm