



**JUMPSUIT CUTTING INSTRUCTIONS**  
©2020 JUMPSUIT CUTTING INSTRUCTIONS LTD  
 WWW.JUMPSUIT.IT

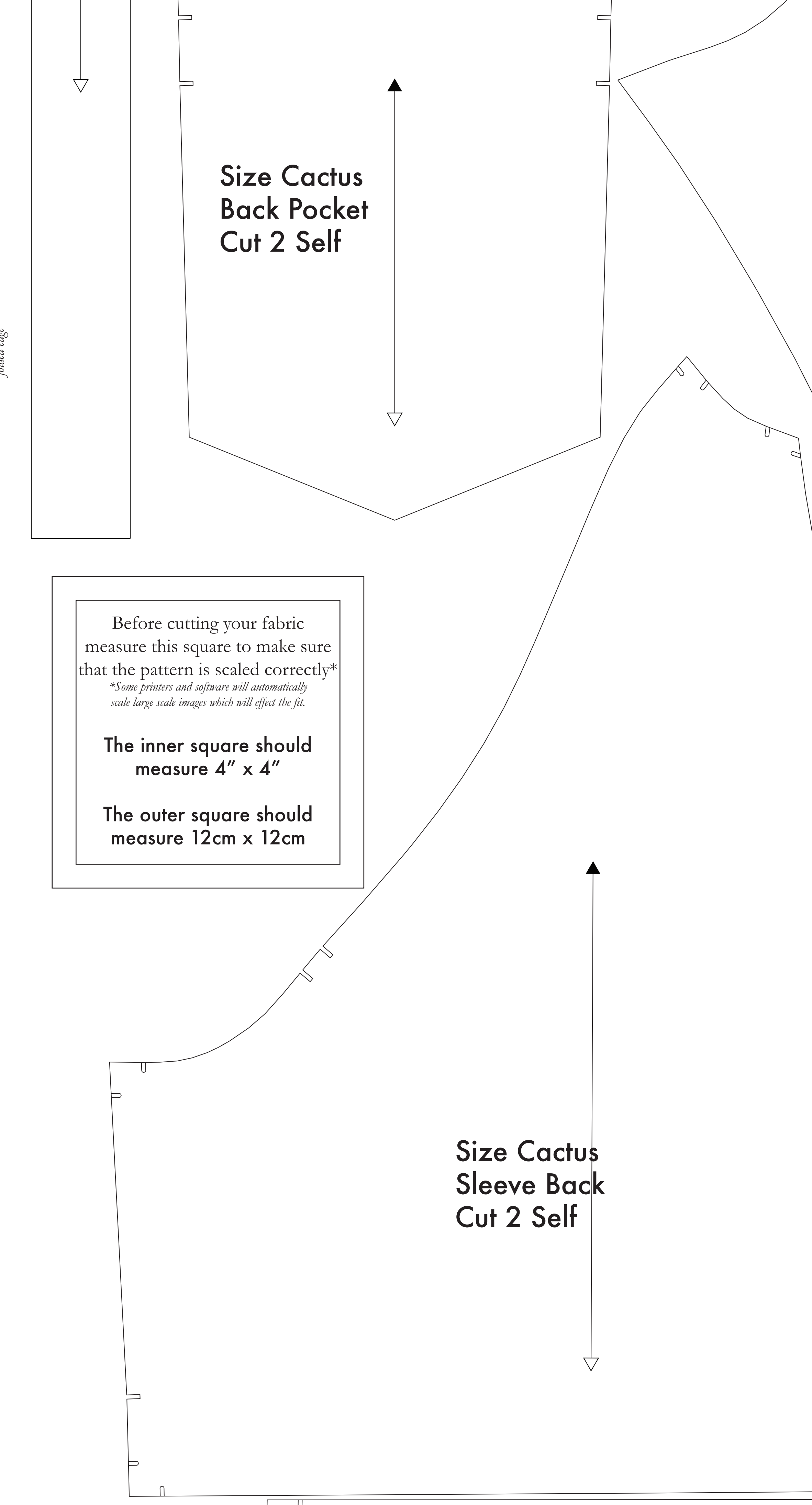
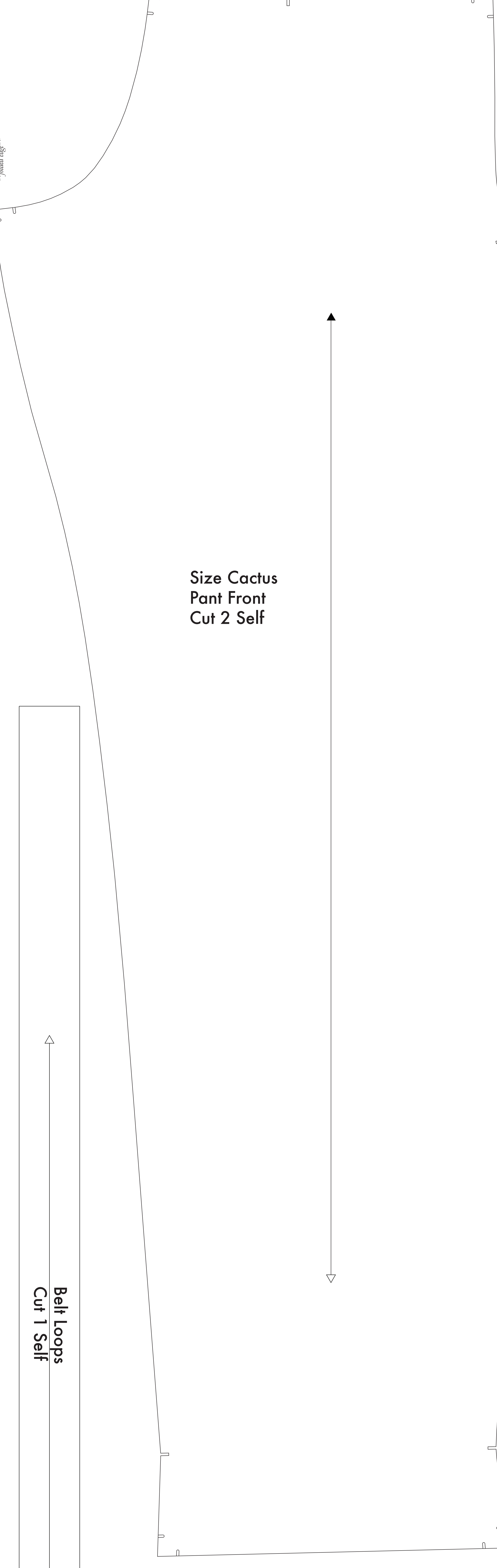
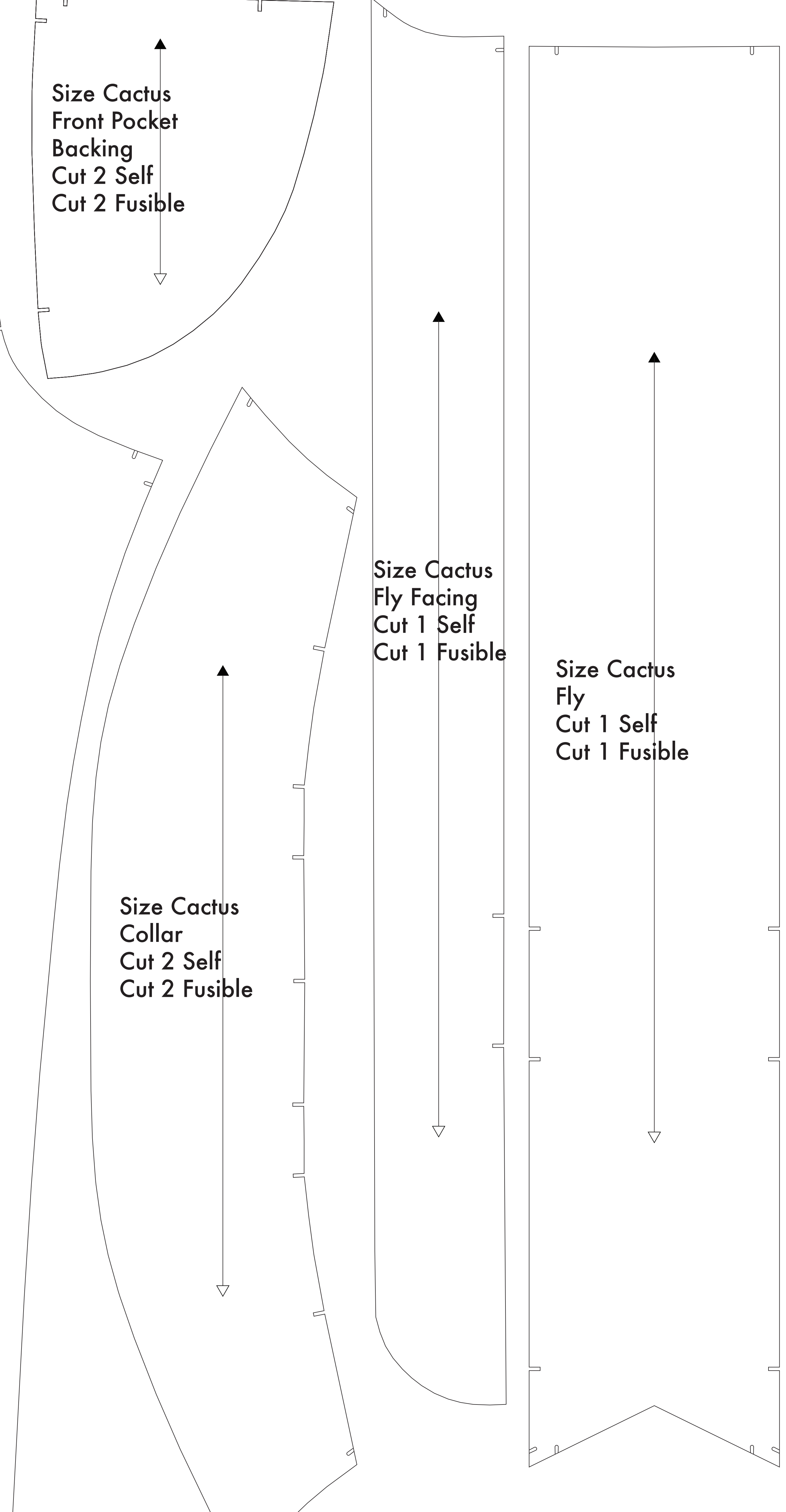
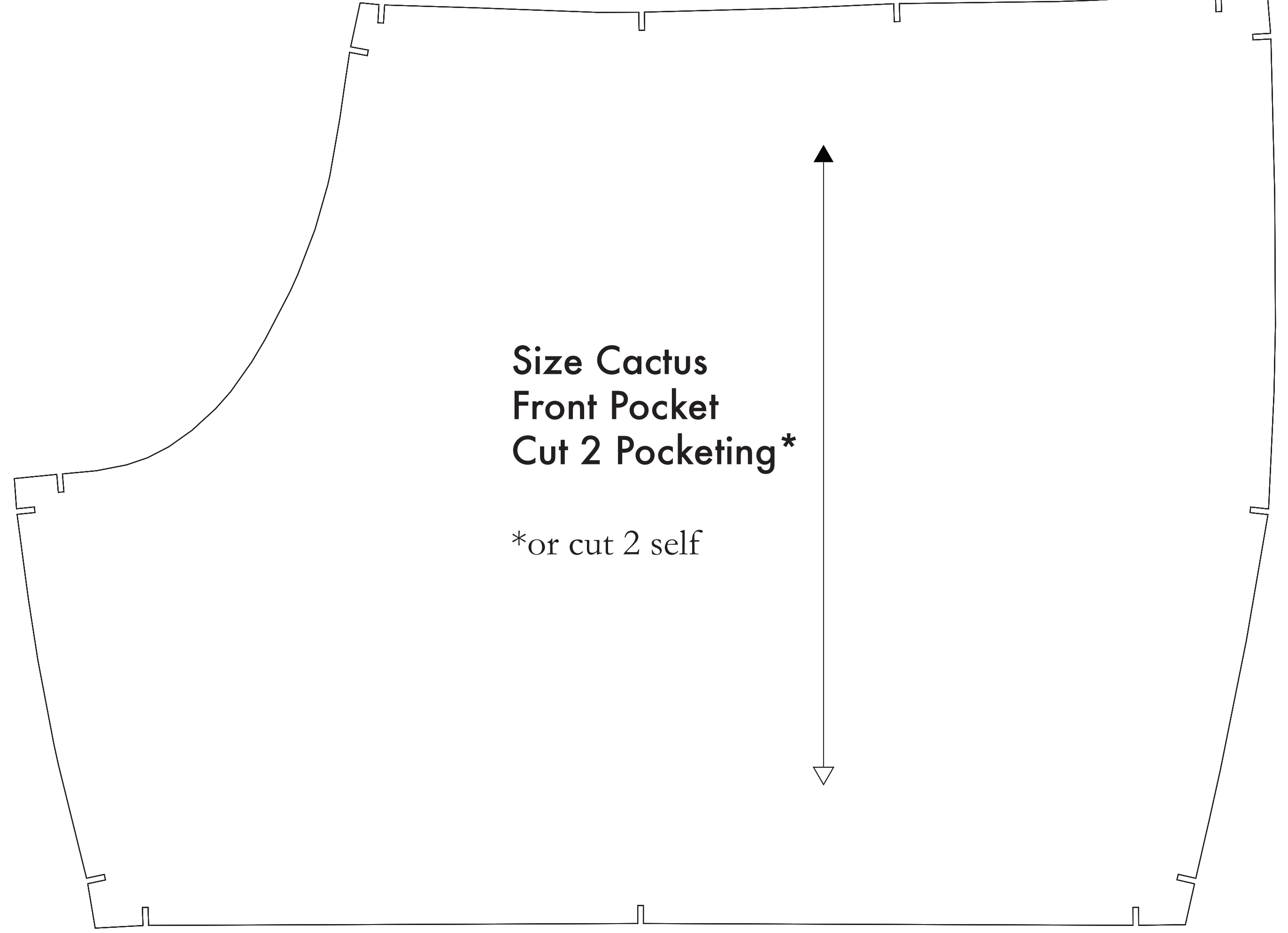
- SUPPLIES NEEDED**
- 3 FARDS OF 54" WIDE FABRIC
  - SHARP SCISSORS
  - REMOVABLE MARKING MEDIUM (chalk, wax, tailor's tack, etc.)
  - 1/2" ZIP NONSEPARATING ZIPPER
  - THREAD
  - SEWING MACHINE
- optional*
- 1/2 YARD OF THINNER POCKET FABRIC
  - FUSIBLE INTERFACING

- CUTTING INSTRUCTIONS**
- Print pattern. You can print this document and on sheets of standard size paper and tape the pieces together, or print on a wide-format printer (36" or wider). Please check offer this service for approximately \$12. If available to you, the RDS recommends wide format printing.
  - Once your pattern is printed, cut along the outermost rectangle to remove any excess paper. This template should fit equally on a 54" wide or larger piece of fabric that has been folded in half. If your fabric is less than 54" wide see **NOTE A**. For maximum yield this pattern is laid out for fabric that does not have a direction. For fabric with a nap, such as velvet or tulle, or fabric with a clear directional print use the **NOTE B**.
  - Fold your fabric in half along the lengthwise grain matching shoulder edge to shoulder edge. Sew along the self-finished edge of fabric. This narrow border keeps the fabric from unraveling or fraying. Offer is has an edge that resembles raw fringe; though rare in frequently a clearly finished line will be found. Avoid this edge in your cut pieces as the texture frequently differs from the main body of the fabric.
  - Place the paper template on top your fabric, matching the folded edge of the fabric with the side of the paper marked "folded edge".
  - Place pins throughout the template pinning together both layers of fabric, as well as the paper.
  - Cut around the perimeter of each piece.
  - Leaving the pins in place, you will need to snip each of the notches, taking care to not snip beyond the end of the 1/2" deep!
  - Snips are the 1/2" deep markings that are hand throughout the pattern. Some markings indicate where to snip, while other indicate where to snip. They will be found on the Front Back, Bodice Back, and of your pattern. They will be found on the Front Back, Bodice Back, and of your pattern.
  - Mark all corner drill holes. Using a pin, bring together both layers of fabric and the pattern, mark the corner of each drill hole with chalk, wax or other removable, nonpermanent tool. A tailor's tack may also be used. *The corner drill hole, or marking, or indicator is the following symbol:*
  - (OPTIONAL) Cut fusible interfacing pieces (see **NOTE C** for more info). Pattern pieces that use fusible will be marked with the direction "Cut 2 Fusible" or "Cut 1 Fusible". These pieces are the Collar, Fly Facing, Front Pocket Facing, and Front Pocket Backing. To cut the fusible, lay the material down with the glue side facing up, then place your pattern down and cut around the perimeter of each piece and notch.
  - Cut the Front Pocket Bag out of a lighter pocketing material. If you are not using a pocketing material, then the Front Pocket Bag may be cut alongside your other pattern pieces. Pocketing is used to reduce bulk in case of thicker material - You will find an example of pocketing on any pair of this pant.

**NOTE A: FABRIC LESS THAN 54" WIDE**  
 If your fabric is less than 54" wide, you will need to cut each pattern piece individually. Before the paper template and trace a border on your fabric using pins to position the pattern piece on the fabric in several ways. The specific orientation and position are all marked on each pattern piece for ease of use. To mark the pattern, simply use the 1/2" wide line with raw edges or other raw edge. These lines are used to determine the width of the fabric. For maximum yield on your fabric, you have to cut the pattern to the width of the fabric. To ensure that the top arm pieces to the edge of the fabric, they mark the arm pieces with the bottom arm. When the top and bottom arms are equidistant from the edge of your fabric, then the pattern piece is correctly positioned.

**NOTE B: FABRIC WITH NAP OR DIRECTIONAL PATTERN**  
 Fusible interfacing is a material that is used to reinforce, strengthen and stabilize certain pieces in a garment. While the use of fusible interfacing is optional, the fusible interfacing is recommended for the collar, fly facing, front pocket facing, and front pocket bag. To use fusible interfacing, you will need to cut the fusible interfacing pieces to the same size as the pattern pieces. The fusible interfacing is used to reinforce, strengthen and stabilize certain pieces in a garment. While the use of fusible interfacing is optional, the fusible interfacing is recommended for the collar, fly facing, front pocket facing, and front pocket bag. To use fusible interfacing, you will need to cut the fusible interfacing pieces to the same size as the pattern pieces.

**NOTE C: USING FUSIBLE INTERFACING**  
 Fusible interfacing is a material that is used to reinforce, strengthen and stabilize certain pieces in a garment. While the use of fusible interfacing is optional, the fusible interfacing is recommended for the collar, fly facing, front pocket facing, and front pocket bag. To use fusible interfacing, you will need to cut the fusible interfacing pieces to the same size as the pattern pieces. The fusible interfacing is used to reinforce, strengthen and stabilize certain pieces in a garment. While the use of fusible interfacing is optional, the fusible interfacing is recommended for the collar, fly facing, front pocket facing, and front pocket bag. To use fusible interfacing, you will need to cut the fusible interfacing pieces to the same size as the pattern pieces.



Before cutting your fabric measure this square to make sure that the pattern is scaled correctly\*  
 \*Some printers and software will automatically scale large sized images which will affect the fit.  
 The inner square should measure 4" x 4"  
 The outer square should measure 12cm x 12cm

