

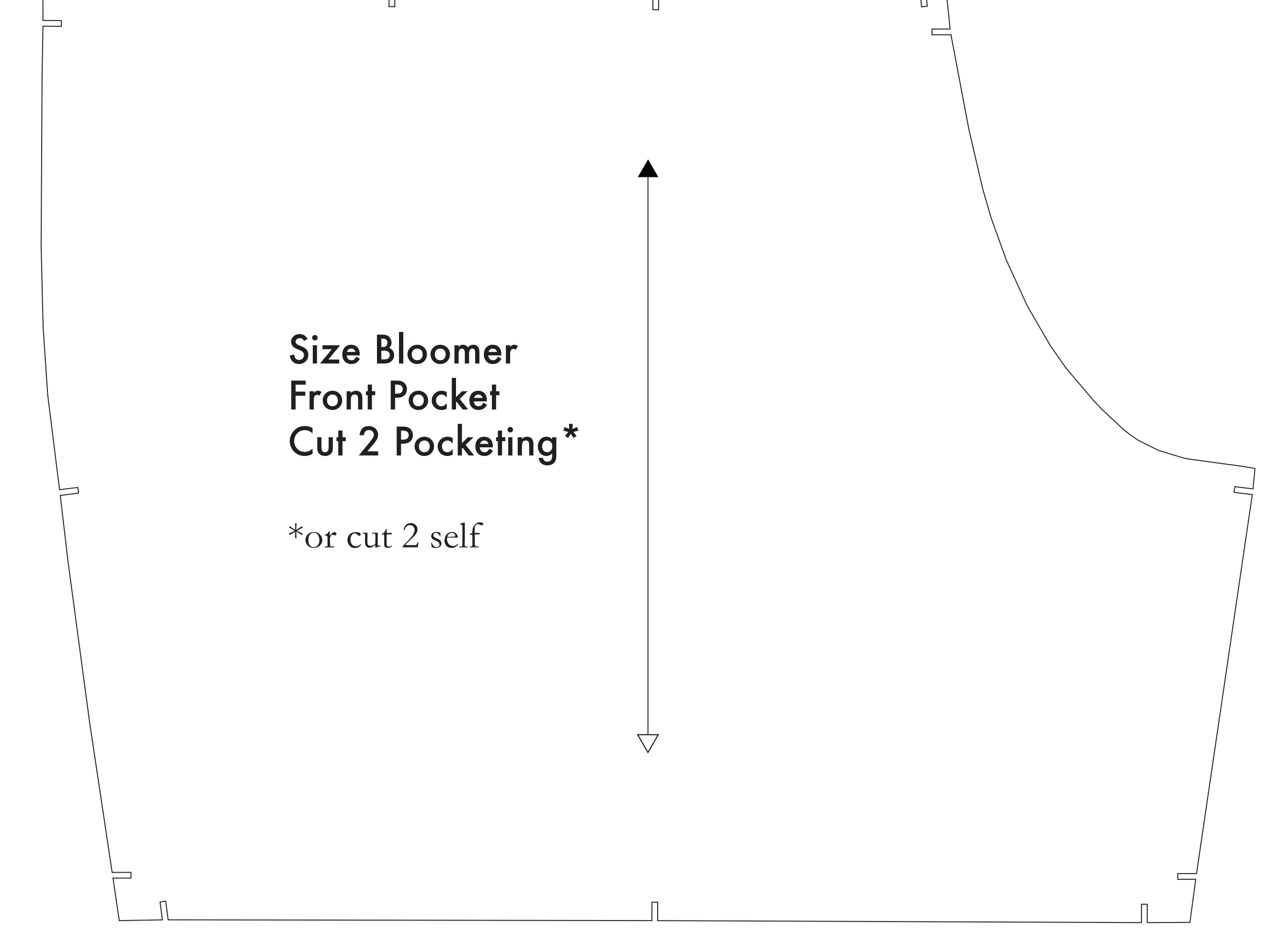
- SUPPLIES NEEDED**
- 3 1/2 YARDS OF 54" WIDE FABRIC
 - SHARP SCISSORS
 - REMOVABLE MARKING MEDIUM (chalk, wax, tailor's tuck, etc.)
 - 1 - 26" NON-SEPARATING ZIPPER
 - THREAD
 - SEWING MACHINE (optional)
 - 1/2 YARD OF THINNER POCKET FABRIC
 - FUSIBLE INTERFACING

- CUTTING INSTRUCTIONS**
1. Print pattern. You can print this document tiled on sheets of standard size paper and tape the pieces together, or print on a wide-format printer (30" or wider). Print sheets after this service for approximately \$12. If available to you, the BCS recommends wide-format printing.
 2. Once you print or print, cut along the outermost rectangle to remove any excess paper. This template should fit exactly on a 34" wide or larger piece of fabric that has been folded in half. If your fabric is less than 54" wide use **NOTE A**. For maximum ease this pattern is laid out for fabric that does not have a direction. For fabric with a nap, such as velvet or corduroy, or fabric with a clear directional grain use **NOTE B**.
 3. Fold your fabric in half along the lengthwise grain matching selvedge edge to selvedge edge. Sewedge at the self-finished edge of fabric. This corner border keeps the fabric from stretching or tearing. Other's line on edge that resembles iron fringe, though just as frequently, a clearly finished line will be found. Avoid this edge in your cut pieces as the texture frequently differs from the main body of the fabric.
 4. Place the paper template on top your fabric, matching the folded edge of the fabric with the side of the paper marked "folded edge".
 5. Place pins throughout the template pinning together both layers of fabric as well as the paper.
 6. Cut around the perimeter of each piece.
 7. Laying the pins in place, you will need need to strip each of the monies, taking care to not strip beyond the end of the fabric.

NOTE A: FABRIC LESS THAN 54" WIDE
 If your fabric is less than 54" wide you will need to cut and sew your pieces separately from the paper template. The paper template and pattern are of equal size. Each piece from the size of the paper template will be cut from the size of the fabric. When marking your fabric, the fabric should be marked to the selvedge edge of the fabric. It is important that you mark the fabric. Also mark the same distance with the bottom corner. When the top and bottom corner are marked the top edge of the fabric the pattern piece is correct position.

NOTE B: FABRIC WITH NAP OR DIRECTIONAL PATTERN
 If your fabric has a nap or a directional pattern, then you will need to mark the fabric with the selvedge edge of the fabric. When marking your fabric, the fabric should be marked to the selvedge edge of the fabric. It is important that you mark the fabric. Also mark the same distance with the bottom corner. When the top and bottom corner are marked the top edge of the fabric the pattern piece is correct position.

NOTE C: USING FUSIBLE INTERFACING
 Fusible interfacing is a material that is used to reinforce, strengthen or stabilize certain pieces in garments. While the use of fusible interfacing is optional, the BCS and BCS recommend using fusible interfacing in the construction of JUMPSUIT.



Before cutting your fabric measure this square to make sure that the pattern is scaled correctly*
 *Some printers and software will automatically scale large scale images which will affect the fit.

The inner square should measure 4" x 4"

The outer square should measure 12cm x 12cm

