

- SUPPLIES NEEDED**
- 1 1/2 YARDS OF 54" WIDE FABRIC
 - SHARP SCISSORS
 - REMOVABLE MARKING MEDIUM (chalk, wax, tailor's tack, etc.)
 - 1 - 26" NON-SEPARATING ZIPPER
 - THREAD
 - SEWING MACHINE (optional)
 - 1/2 YARD OF THINNER POCKET FABRIC
 - FUSIBLE INTERFACING

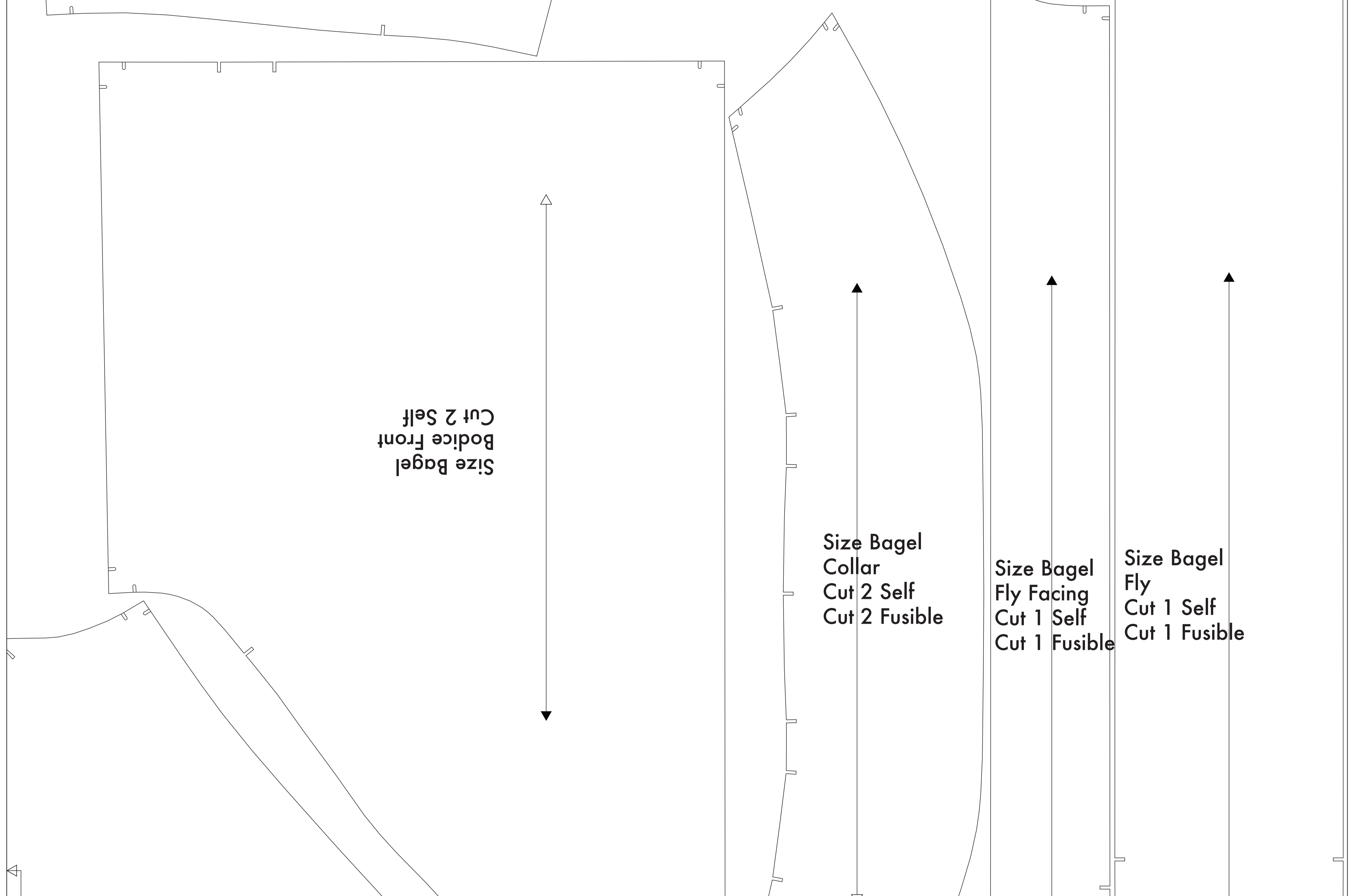
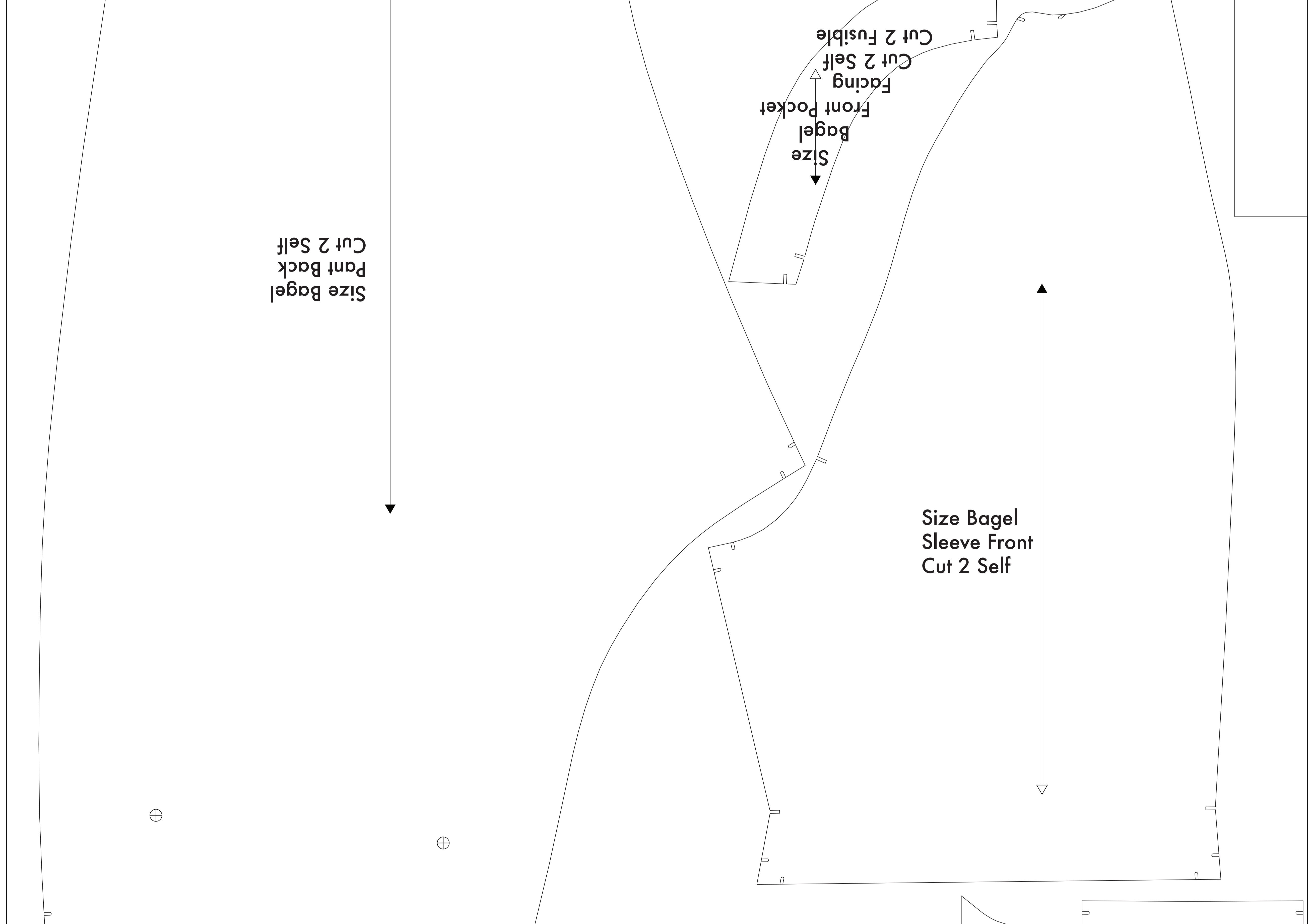
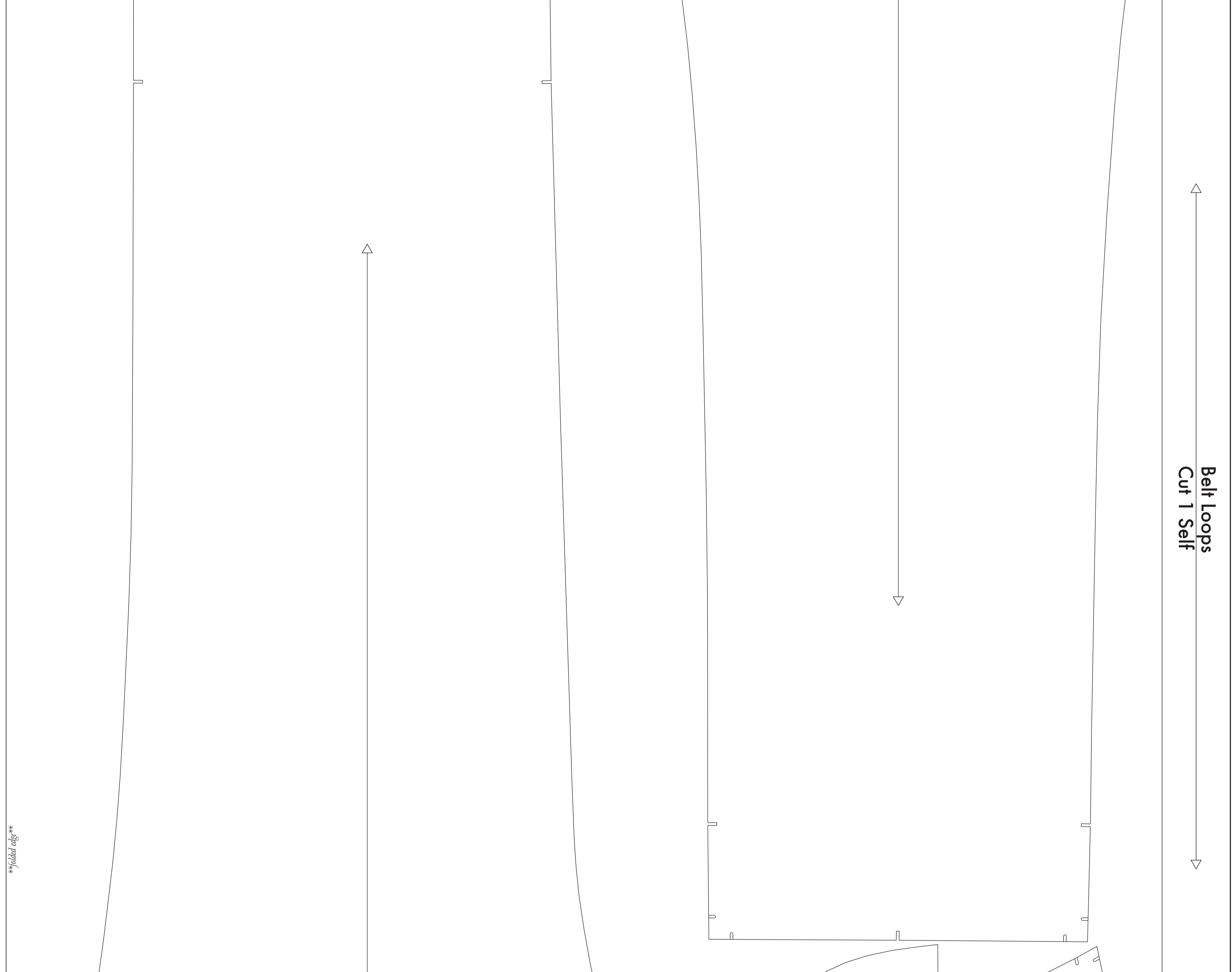
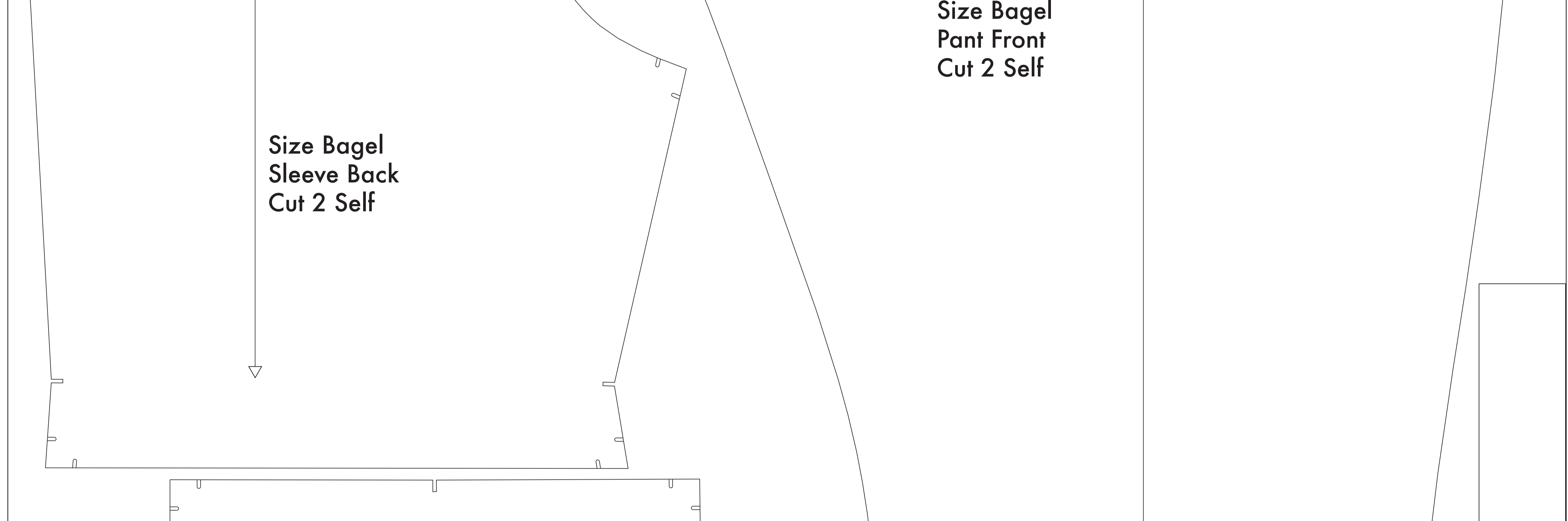
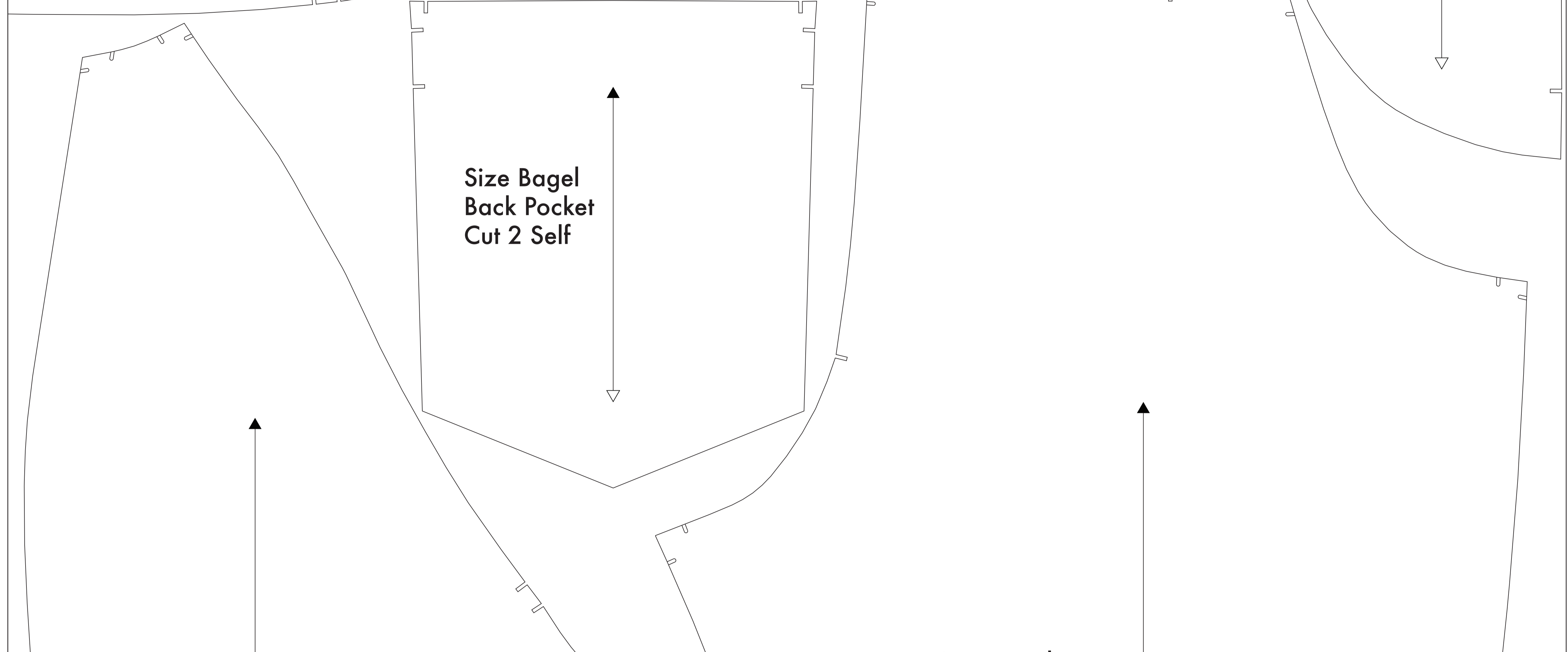
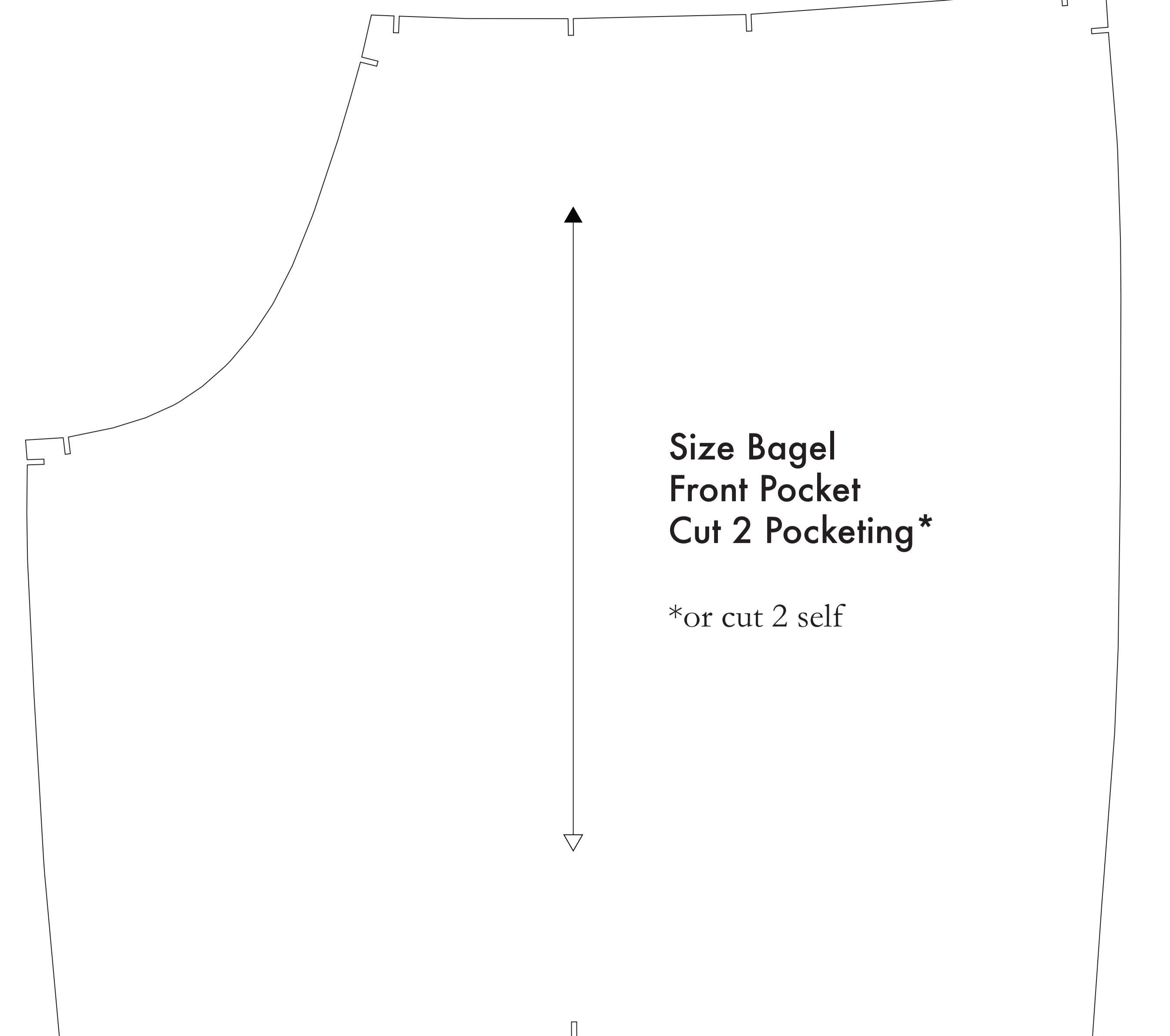
CUTTING INSTRUCTIONS

- Print pattern. You can print the document grid on sheets of standard size paper and tape the pieces together, or print on a wide format printer (36" or wider). Please check after this service has approximately 3-5%. If available to you, the RDS recommends wide format printing.
- Check your pattern is printed, cut along the outermost rectangle to remove any excess paper. This template should be roughly a 54" wide or larger piece of fabric that has been folded in half. If your fabric is less than 54" wide **NOTE A:** The maximum fold this pattern is for is for fabric that does not have a direction. For fabric with a nap, such as velvet or tulle, or fabric with a clear directional print see **NOTE B.**
- Hold your fabric in half along the lengthwise grain matching selvage edge to selvage edge. Schedule in the self finished edge of fabric. This narrow border keeps the fabric from unraveling or fraying. Often a bias or edge that works like one thing, though in a frequently, a clearly finished line will be found. Avoid this edge in your cut pieces as the texture frequently differs from the main body of the fabric.
- Place the paper template on top of your fabric, matching the folded edge of the fabric with the side of the paper marked "folded edge."
- Trace over throughout the complete pattern together both layers of fabric as well as the paper.
- Use around the perimeter of each piece.
- Leaving the fold of fabric, you will need to strip each of the neckholes, taking care to not strip beyond the end of the 1" strap!
- Mark all interior fold lines, waist or other notches, inseamment notches. A tailor's tack may also be used. This marker will help, or markings, are indicated by the adjacent circles.
- They will be used on the Front Back, Back Back, and Front Pocket pieces. Use them on the Back Back, Back Back, and Front Pocket pieces. Use them on the Back Back, Back Back, and Front Pocket pieces. Use them on the Back Back, Back Back, and Front Pocket pieces.
- OPTIONAL:** Use fusible interfacing pieces (see **NOTE C** for more info). Pattern pieces that use fusible will be marked with the direction "Cut 2 Fusible" or "Cut 1 Fusible". These pieces are the Collar, Fly, Fly Facing, Front Pocket Facing, and Front Pocket Backing. To cut the fusible, lay the material down with the glue side facing up, then place your pattern down and cut around the perimeter of each piece and notch.
- Use the Front Pocket Bag out of a lighter pocketing material. If you are not using a pocketing material, then the Front Pocket Bag may be cut straight over other pattern pieces. *Backings a waist in other fabric is not a collar material - You will find an example of pocketing on any part of this pattern.*

NOTE A: FABRIC LESS THAN 54" WIDE
 If your fabric is less than 54" wide, you will need to cut your pieces from multiple sheets. Use the paper template and fabric piece to mark fabric sheets to ensure the pieces remain the same size. The paper template and fabric piece are not to be used for the pattern. The paper template and fabric piece are not to be used for the pattern. The paper template and fabric piece are not to be used for the pattern.

NOTE B: FABRIC WITH NAP OR DIRECTIONAL PATTERN
 For fabric with a nap or directional pattern, fabric with a clear directional print, or fabric with a directional pattern, you will need to cut your pieces from multiple sheets. Use the paper template and fabric piece to mark fabric sheets to ensure the pieces remain the same size. The paper template and fabric piece are not to be used for the pattern. The paper template and fabric piece are not to be used for the pattern.

NOTE C: USING FUSIBLE INTERFACING
 Fusible interfacing is a material that adds structure, strength, and holds your pieces in place. When the glue side of the interfacing is applied to the fabric, the glue side of the interfacing will be on the outside of the fabric. The glue side of the interfacing will be on the outside of the fabric. The glue side of the interfacing will be on the outside of the fabric.



Belt Loops
 Cut 1 Self

Before cutting your fabric measure this square to make sure that the pattern is scaled correctly.*
 *Some printers and software will automatically scale large scale images which will affect the fit.
 The inner square should measure 4" x 4"
 The outer square should measure 12cm x 12cm