



JUMPSUIT CUTTING INSTRUCTIONS
DOCUMENT: BCSJUMPSUIT CUTTING INSTRUCTIONS V1.0

- SUPPLIES NEEDED**
- 3 1/4 YARDS OF 24" WIDE FABRIC
 - SHARP SCISSORS
 - REMOVABLE MARKING MEDIUM (chalk, wax, tailor's tuck, etc.)
 - 1 - 26" NON-SEPARATING ZIPPER
 - THREAD
 - SEWING MACHINE (optional)
 - 1/2 YARD OF THINNER POCKET FABRIC
 - FUSIBLE INTERFACING

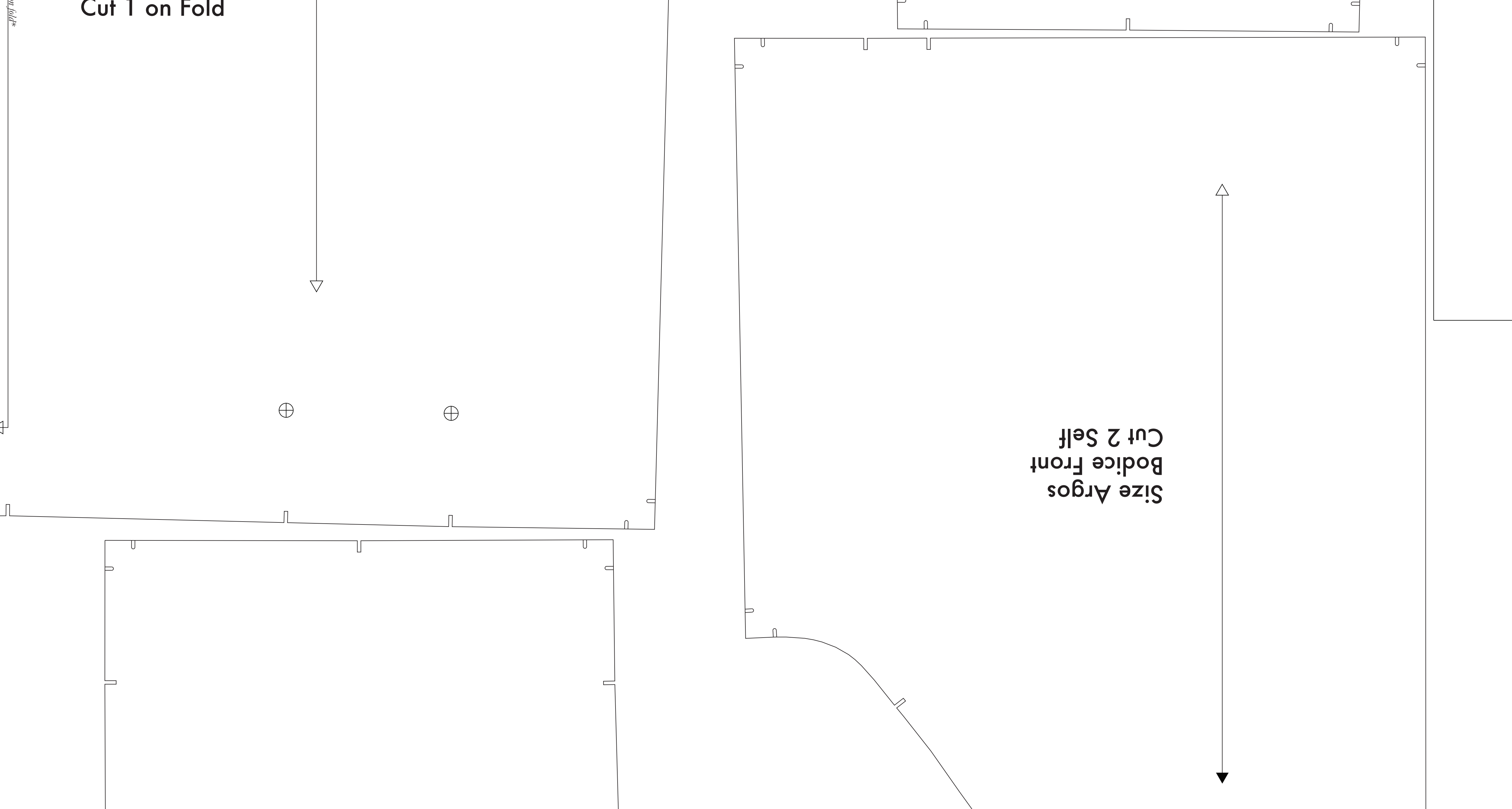
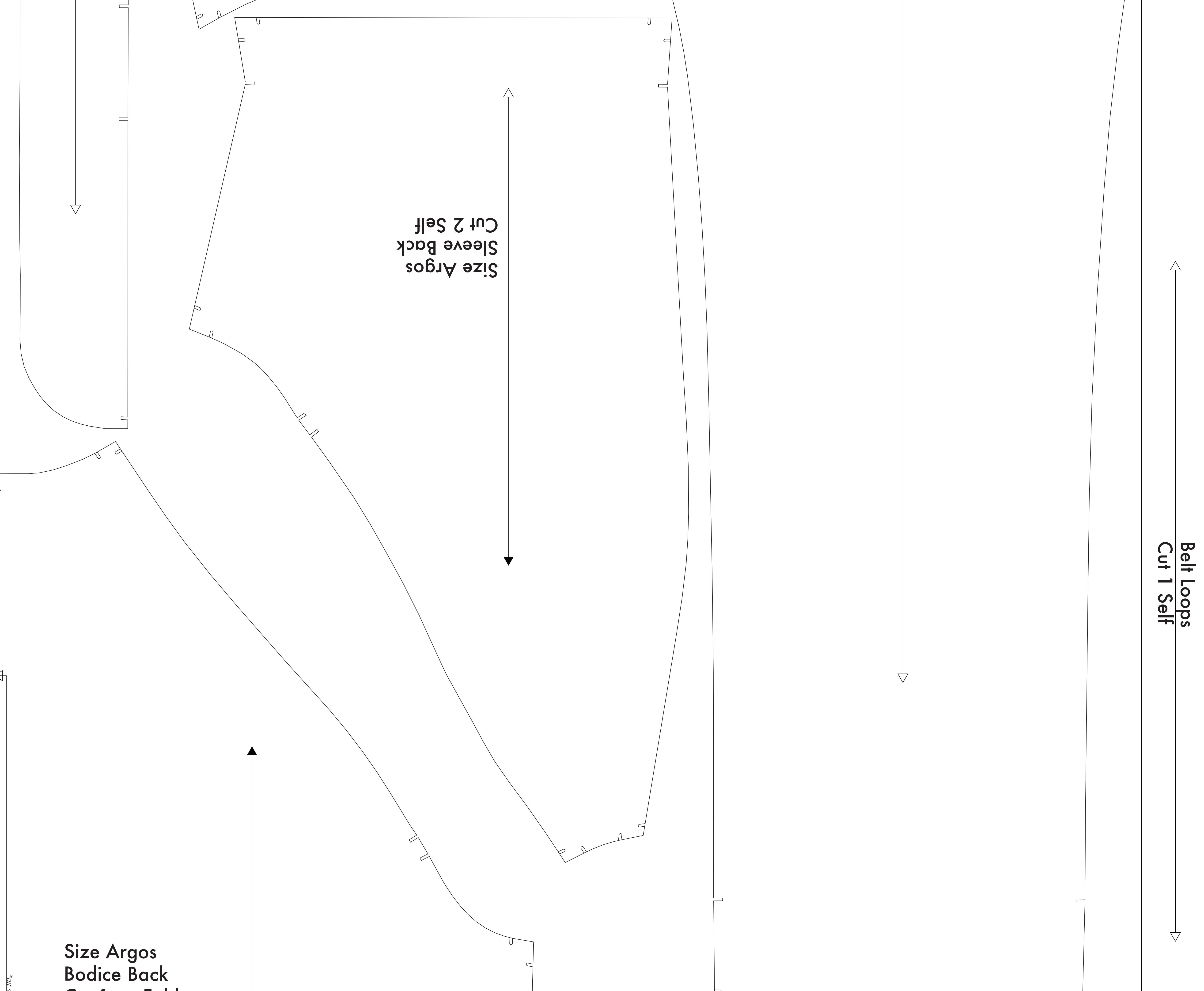
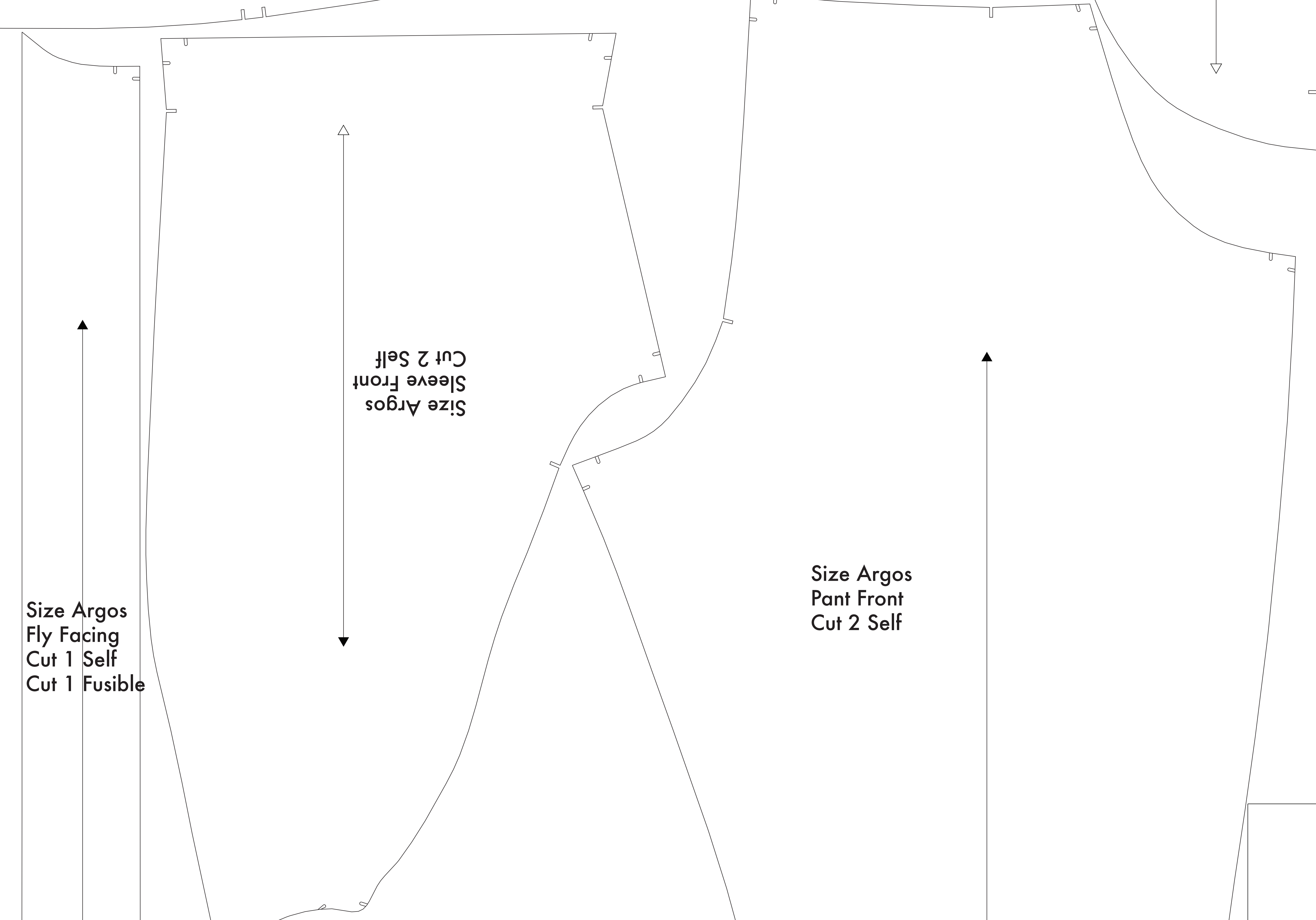
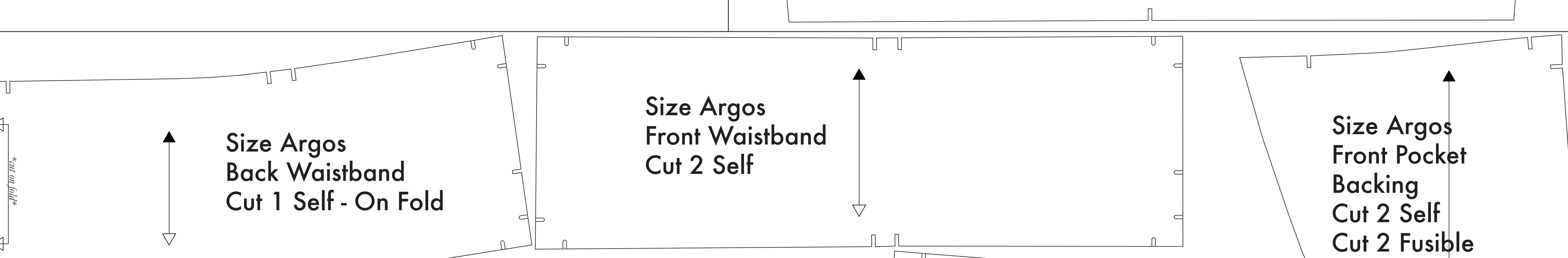
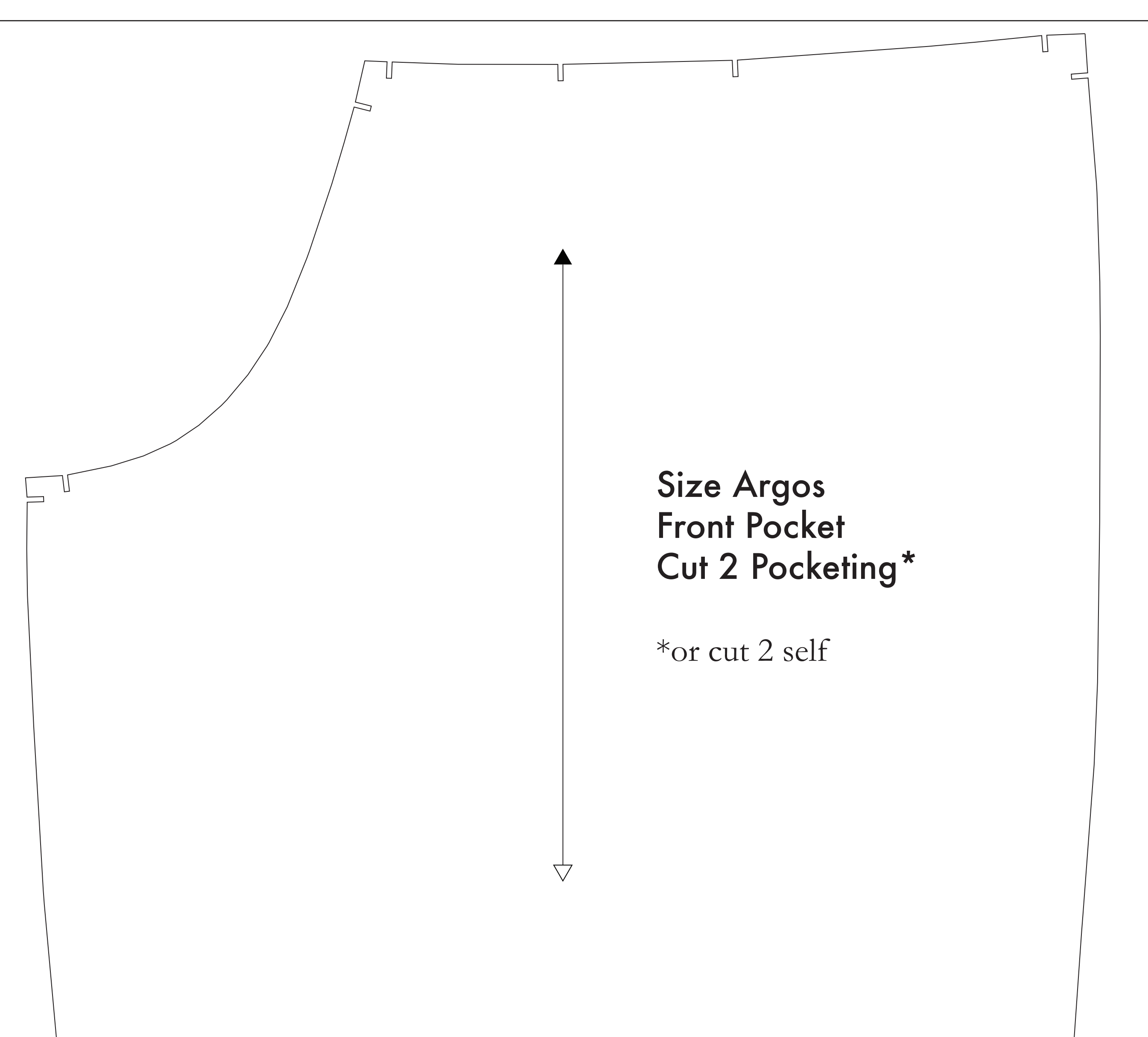
CUTTING INSTRUCTIONS

1. Print pattern. You can print the document that on sheets of standard size paper and tape the pieces together, or print on a wide format printer (36" or wider). Print those offer this service for approximately \$12. If available to you, the PDF is recommended for easier printing.
2. Once your pattern is printed, cut along the outermost rectangle to remove any excess paper. This template should fit exactly on a 4'x8' sheet of paper. If you have fabric that has been folded in half, you will need a 4'x8' sheet of paper. For maximum yield this pattern is laid out for fabric that does not have a direction. For fabric with a nap, you will need to cut the pieces in half and use the other side of the pattern. For fabric with a direction, you will need to cut the pieces in half and use the other side of the pattern. For fabric with a nap, you will need to cut the pieces in half and use the other side of the pattern.
3. Fold your fabric in half along the lengthwise grain marking, so the edge to be sewn is on the inside. Lay the pieces on the fabric, smoothing out any wrinkles. The pattern is laid out for fabric that does not have a direction. For fabric with a direction, you will need to cut the pieces in half and use the other side of the pattern. For fabric with a nap, you will need to cut the pieces in half and use the other side of the pattern.
4. Place the paper template on top of your fabric, matching the folded edge of the fabric with the side of the paper marked "folded edge".
5. Place pins throughout the template pinning together both layers of fabric as well as the paper.
6. Cut around the perimeter of each piece.
7. Leaving the pins in place, you will need to strip each of the notches, taking care to not strip beyond the end of the "U" shape.

NOTE A: FABRIC LESS THAN 24" WIDE
If you have fabric that is less than 24" wide, you will need to cut the pieces in half and use the other side of the pattern. For fabric with a direction, you will need to cut the pieces in half and use the other side of the pattern. For fabric with a nap, you will need to cut the pieces in half and use the other side of the pattern.

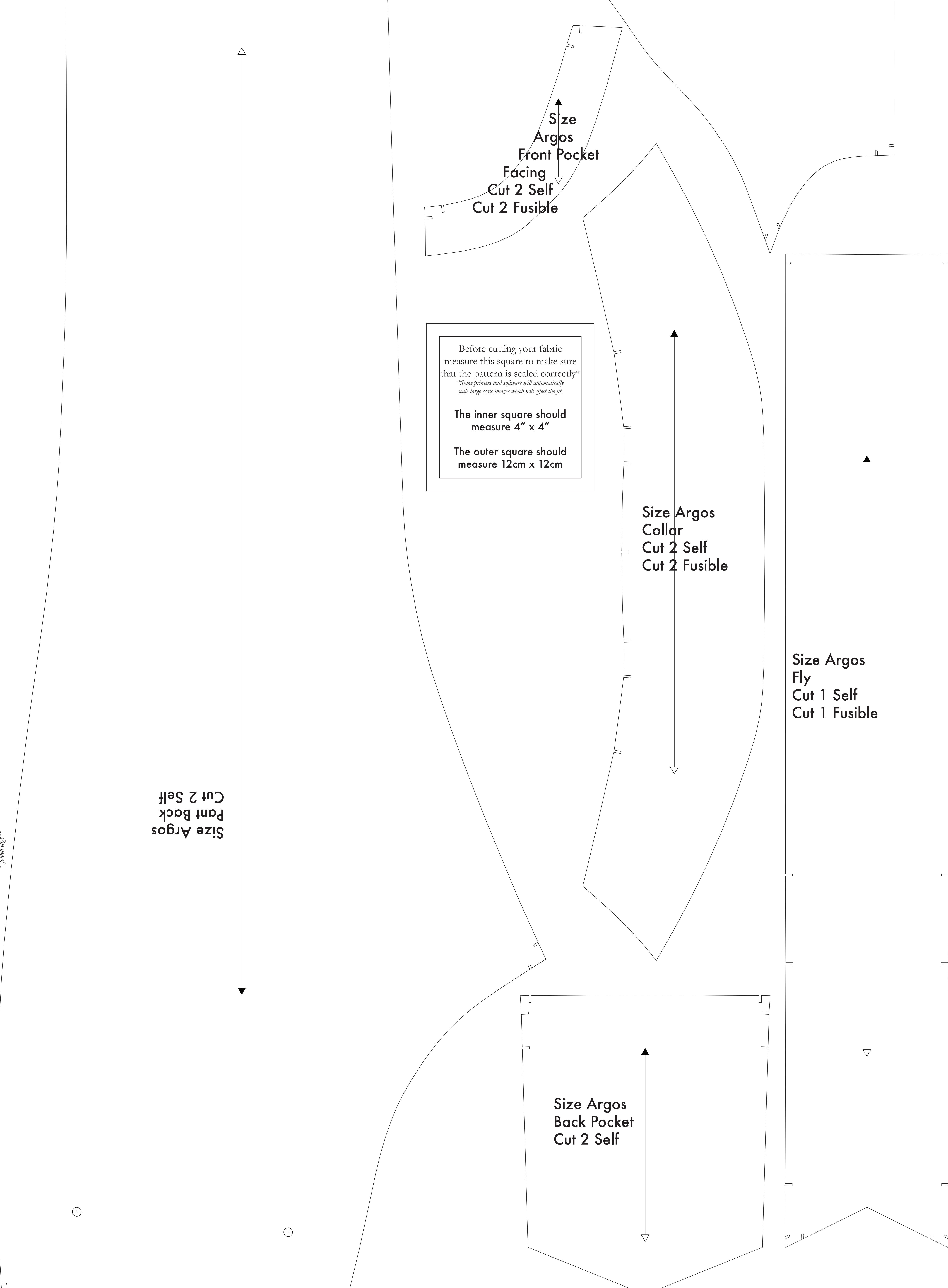
NOTE B: FABRIC WITH NAP OR DIRECTIONAL PATTERN
For fabric with a nap, you will need to cut the pieces in half and use the other side of the pattern. For fabric with a directional pattern, you will need to cut the pieces in half and use the other side of the pattern.

NOTE C: USING FUSIBLE INTERFACING
Fusible interfacing is a material that is used to reinforce, strengthen, and stabilize woven fabrics. It is applied to the inside of the fabric, usually by ironing. It is used to reinforce the collar, cuffs, and pocket flaps. It is used to reinforce the waistband and the pocket flaps. It is used to reinforce the waistband and the pocket flaps.



Before cutting your fabric measure this square to make sure that the pattern is scaled correctly*
*Some printers and software will automatically scale large images which will affect the fit.

The inner square should measure 4" x 4"
The outer square should measure 12cm x 12cm



Belt Loops Cut 1 Self