

- SUPPLIES NEEDED**
- 3 1/2 YARDS OF 54" WIDE FABRIC
  - REMOVABLE MARKING MEDIUM (chalk, wax, tailor's tack, etc.)
  - 2" NON-SEPARATING ZIPPER
  - THREAD
  - SEWING MACHINE
  - 1/2 YARD OF THINNER POCKET FABRIC
  - FUSIBLE INTERFACING

**CUTTING INSTRUCTIONS**

1. Print pattern. You can print this document (that includes standard size paper and tape the pieces together, or print on a wide-format printer (C1 or wider). Print sheets offer this service for approximately \$12. If available to you, the \$200+ commercial wide format printing.
2. Once your pattern is printed, cut along the cutout markings to remove any excess paper. This template should fit exactly on 54" wide or larger pieces of fabric that have been folded in half. If your fabric is less than 54" wide, see **NOTE 1** for maximum width this pattern is set for for fabric that does not have a direction. For fabric with a nap, such as velvet or cashmere or fabric with clear directional print, see **NOTE 2**.
3. Fold your fabric in half along the lengthwise grain matching selvage edge to selvage edge. Subdivide in the self-folded edge of fabric. This mirror back keeps the fabric from stretching or fraying. When it is on edge, the markings are clearly visible, though just as frequently, a clearly finished line will be found. Avoid this edge in your cut pieces as the texture frequently differs from the main body of the fabric.
4. Place the paper template on top of your fabric, matching the folded edge of the fabric with the side of the paper marked "folded edge".
5. Place pins throughout the template pinning together both layers of fabric as well as the paper.
6. Cut around the perimeter of each piece.
7. Laying the pins in place, you will need to cut along each of the notches, taking care to not slip beyond the end of the fabric.
8. **Notches are NOT to be cut!** *Alphabet markings that are placed throughout the pattern.* Some notches indicate seam allowances, while others will tell you the top of your piece when sewing.
9. Mark all zipper darts, hems, truss, a pin, being together both layers of fabric and the pattern, mark the center of each dart hick with chalk, wax or other removable, permanent tool. A tailor's tack may also be used. *These notches are used for Pin, Bar, Buckle, Hook, and if your pattern includes that area, also for Sew, Fold, or Fold, Press.*
10. **OPTIONAL:** Cut fusible interfacing pieces (see **NOTE C** for more info). Pattern pieces that are fusible will be marked with the distinctive "Cut 2 Fusible" or "Cut 1 Fusible". These pieces use the Letter (F), H, I, J, K, L, M, N, O, P, Q, R, S, T, U, V, W, X, Y, Z, and are used for the Collar, Fly, Fly Facing, Front Pocket Facing, and Front Pocket Backing. To use the fusible, lay the material down with the grain side facing up. Once your pattern pieces are cut, lay the interfacing material. If you are not using a permanent material, then the Letter (F) Fly Facing may be cut slightly over the pattern pieces. *Fusible is not to be cut in case of fusible material - You will find an example of Fusible on any part of this page.*

**NOTE A: FABRIC LESS THAN 54" WIDE**

If you have a fabric that is 54" wide or less, you will need to use a wider-format printer (C1 or wider). Print sheets offer this service for approximately \$12. If available to you, the \$200+ commercial wide format printing.

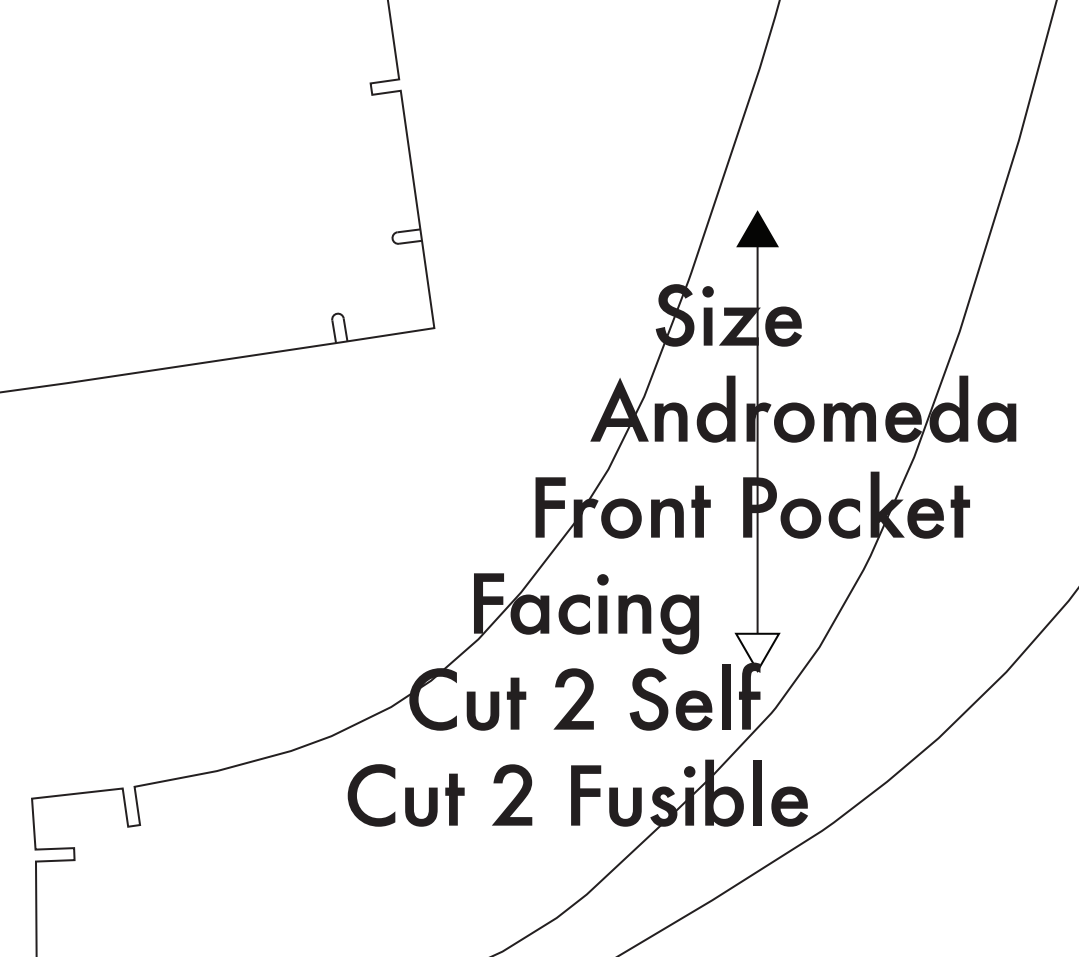
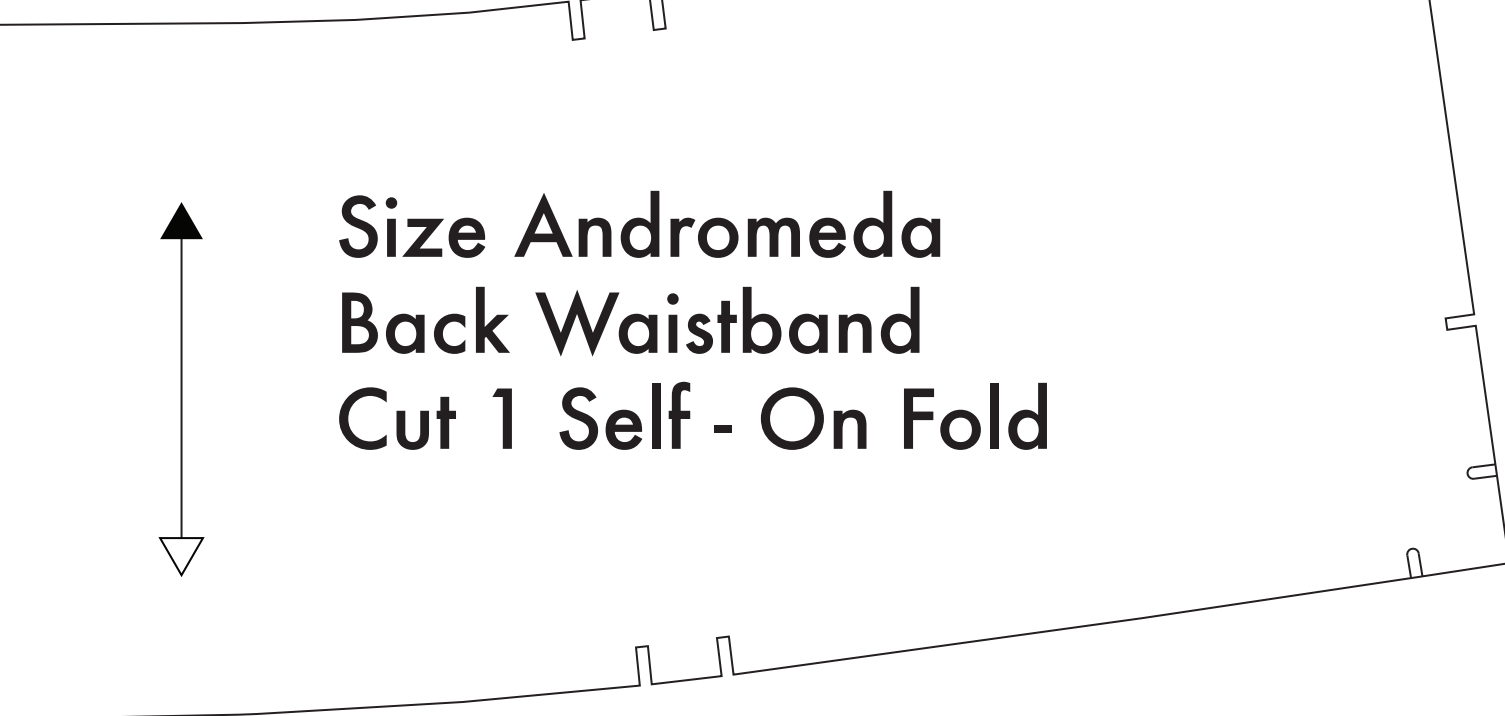
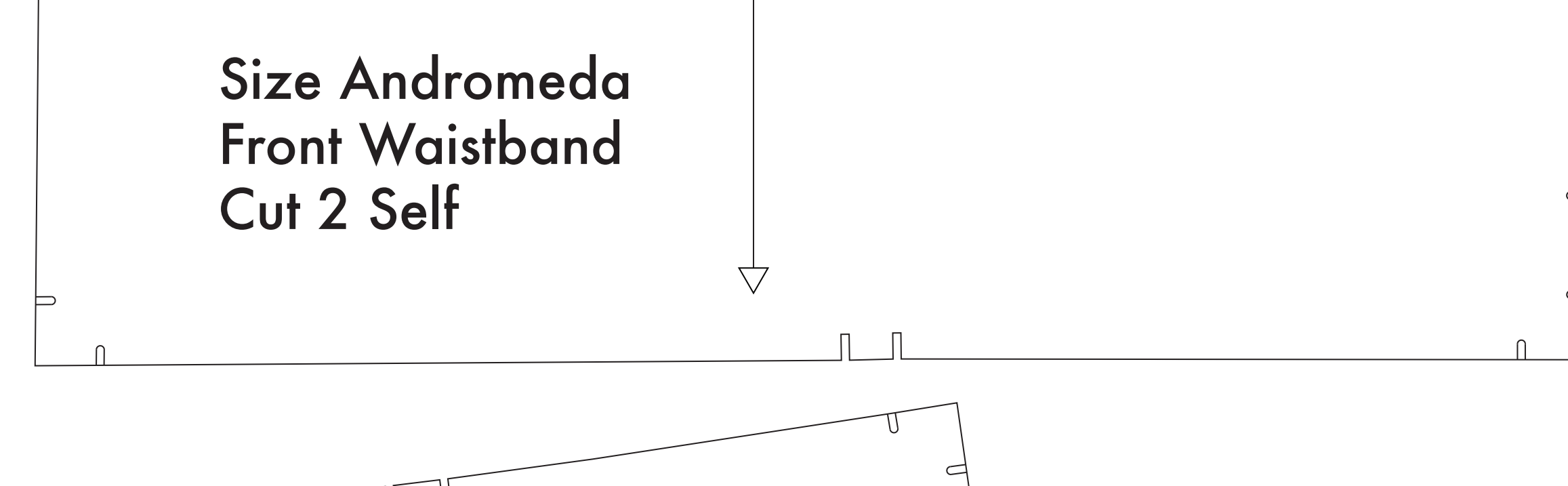
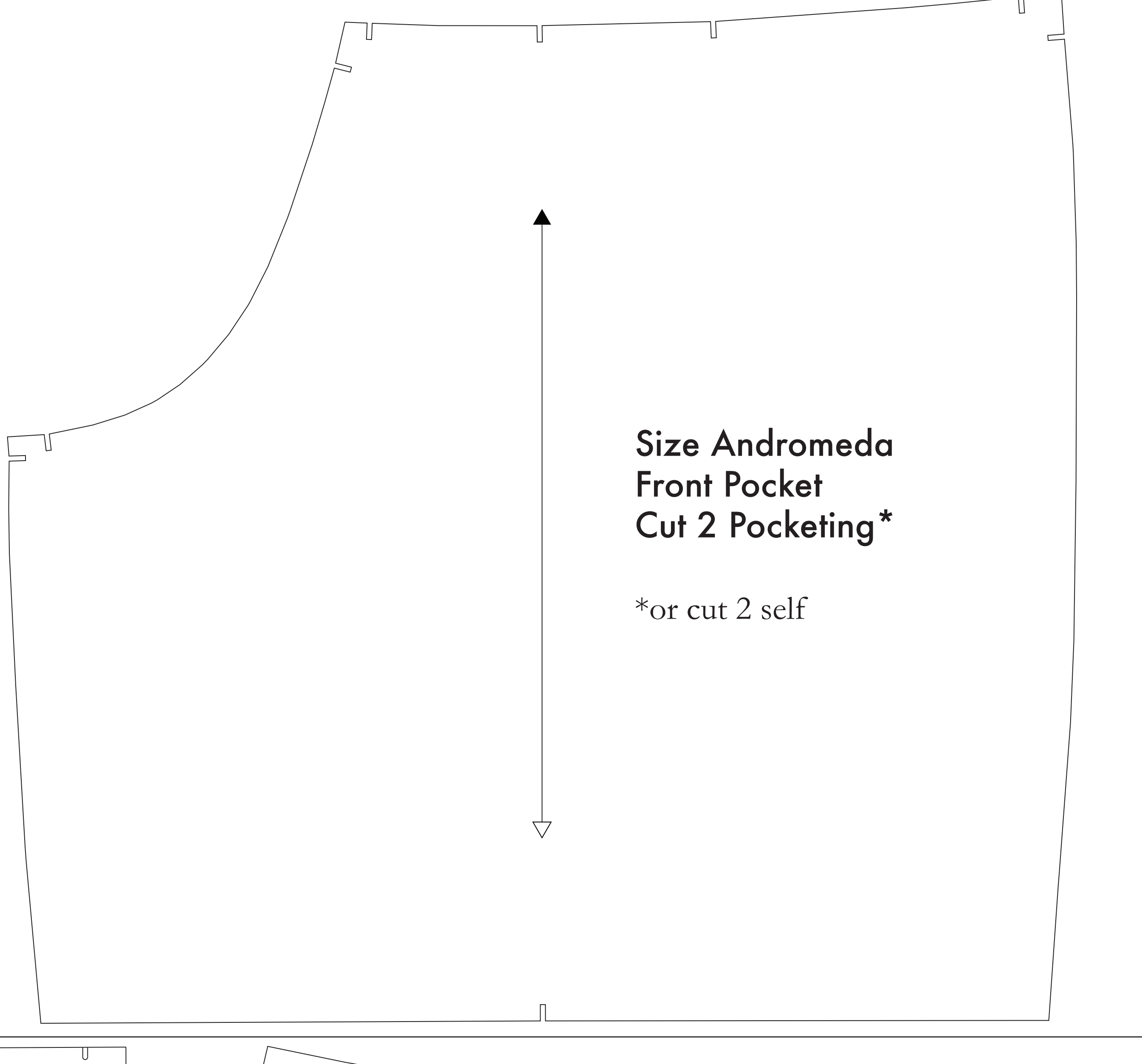
**NOTE B:** For maximum width this pattern is set for for fabric that does not have a direction. For fabric with a nap, such as velvet or cashmere or fabric with clear directional print, see **NOTE 2**.

**NOTE C: FUSIBLE WITHIN OR DIRECTIONAL PATTERNS**

Fusible interfacing is a material that is used to stabilize, strengthen, and hold pattern pieces in place. It is used to stabilize the fabric and to hold the pattern pieces in place. It is used to stabilize the fabric and to hold the pattern pieces in place.

**NOTE D: USING FUSIBLE INTERFACING**

Fusible interfacing is a material that is used to stabilize, strengthen, and hold pattern pieces in place. It is used to stabilize the fabric and to hold the pattern pieces in place.



Before cutting your fabric measure this square to make sure that the pattern is scaled correctly\*  
\*Some printers and software will automatically scale large scale images which will affect the fit.  
The inner square should measure 4" x 4"  
The outer square should measure 12cm x 12cm

